



Ladywell Point, Pilgrims Way

Salford

HILLS

£130,000

Ladywell Point

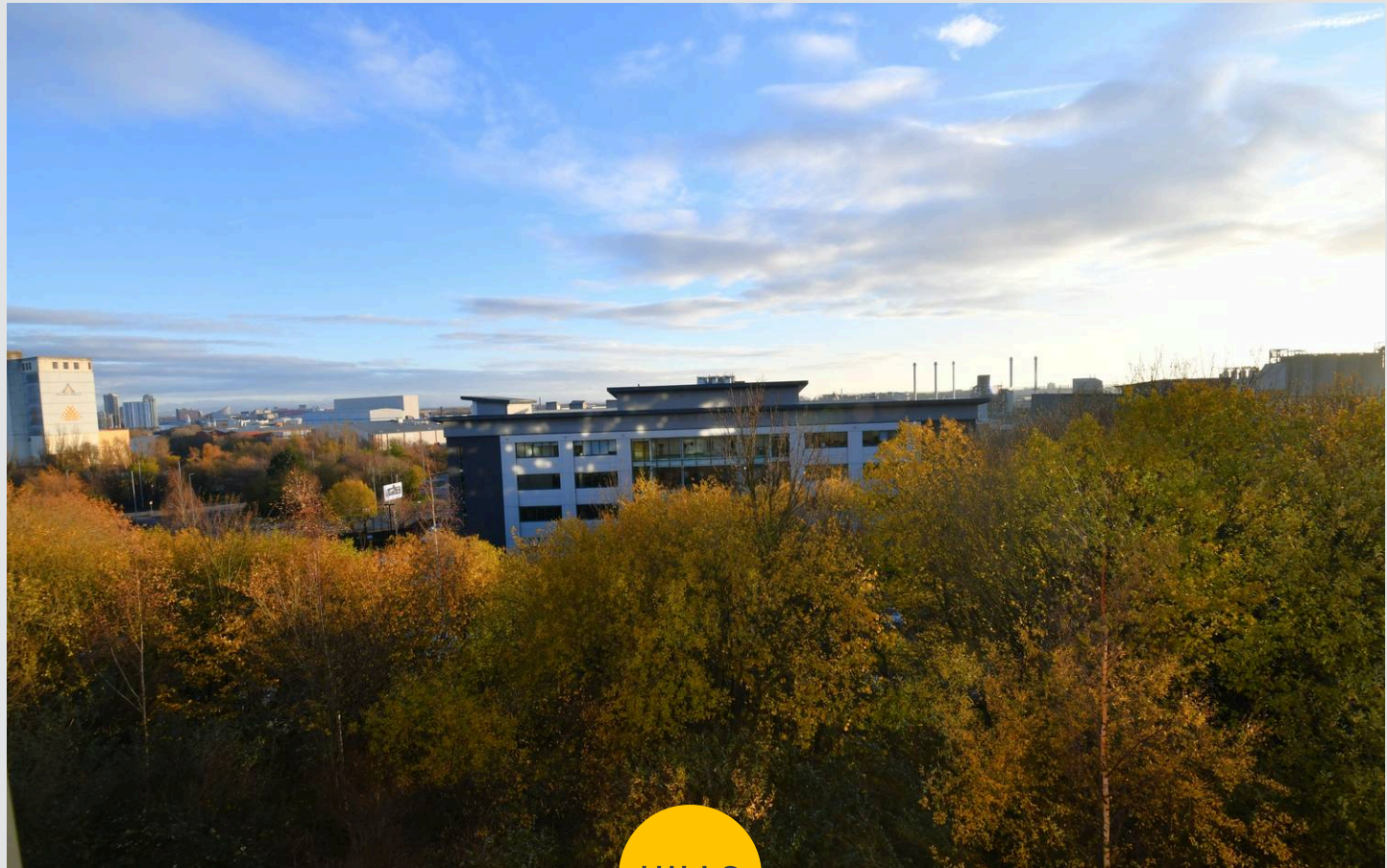
Salford

****CASH BUYERS ONLY**** Spacious Two Bedroom Apartment with Communal Lift Access – Just a Short Walk from Ladywell Tram Stop! Close to Eccles Town Centre and West One Retail Park!

Council Tax band: B

Tenure: Leasehold

- Spacious Two Bedroom Apartment
- Located Just a Short Walk from Ladywell Tram Stop, with Direct Access into Salford Quays, Media City and Manchester City Centre
- Modern, Open Plan Living, Dining and Kitchen Area Complete with a Juliette Balcony
- Two Well-Proportioned Bedrooms
- Ensuite to the Main Bedroom
- Modern Three-Piece Bathroom
- Benefits from a Communal Lift
- Close to Eccles Town Centre and West One Retail Park Providing a Range of Amenities
- Viewing is Highly Recommended!



HILLS



Entrance Hallway

Living/Dining/Kitchen

21' 4" x 13' 11" (6.51m x 4.23m)

Bedroom One

13' 3" x 10' 8" (4.03m x 3.25m)

Ensuite

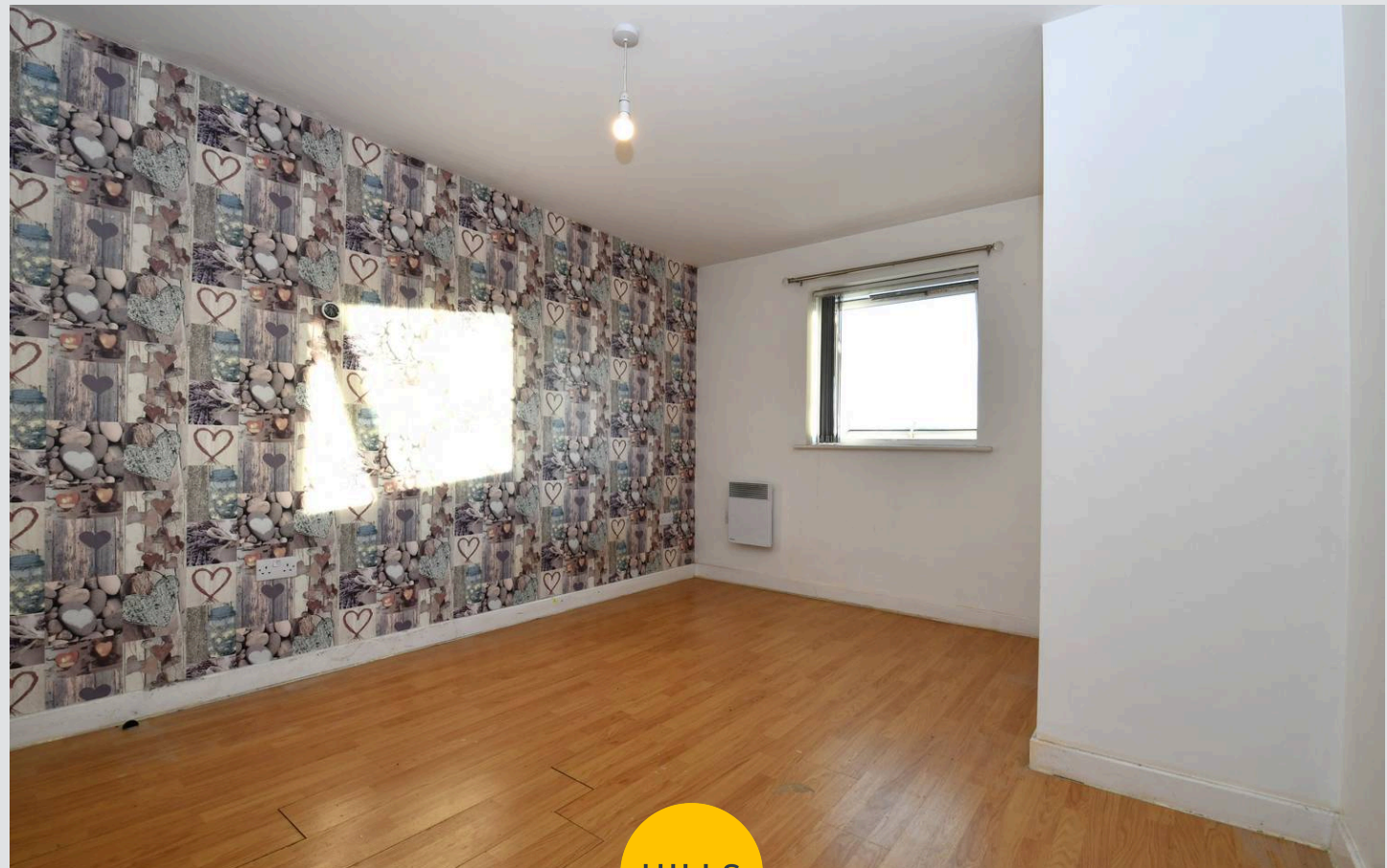
7' 9" x 4' 6" (2.37m x 1.36m)

Bedroom Two

10' 6" x 9' 7" (3.19m x 2.92m)

Bathroom

6' 4" x 7' 9" (1.94m x 2.36m)



HILLS







Hills | Salfords Estate Agent

Hills Residential, Sentinel House Albert Street – M30 0SS

0161 707 4900

sales@hills.agency

www.hills.agency/



By law, we are required to conduct anti-money laundering checks on all potential buyers and sellers. In line with HMRC guidelines, our trusted partner, Coadjute, will securely manage these checks on our behalf. A non-refundable fee of £45 + VAT per person will apply, and Coadjute will handle the payment. Once an offer is accepted, Coadjute will send a secure link for you to complete the biometric checks. These checks must be completed before we can send the memorandum of sale to all parties. PLEASE NOTE: The Agent has not tested any equipment, fixtures, fittings or services so cannot verify that they are in working order or fit for the purpose. References to the properties tenure are based on information supplied by the seller. You are advised to check the availability of this property before travelling any distance to view. Every effort has been made to ensure these particulars are correct and not misleading but their accuracy is not guaranteed nor do they form part of any contract.