



Westfield, 15 Kidderpore Avenue  
£7,500 pcm

## Westfield, London

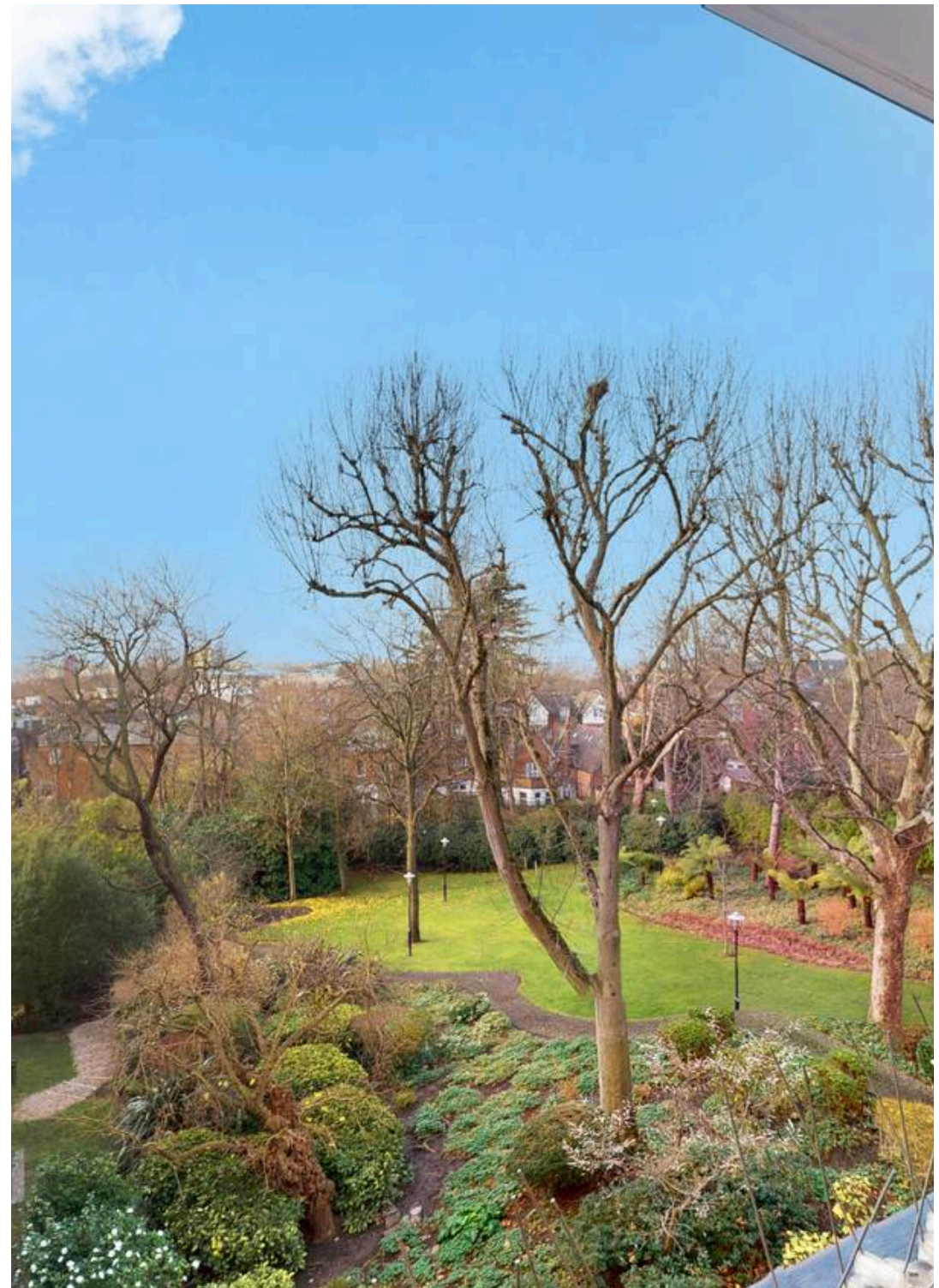
A spacious four-bedroom, three-bathroom apartment located on the third floor of a well-maintained development on Kidderpore Avenue, NW3, with lift access. The property has just been redecorated throughout and is offered unfurnished. Council Tax band: G

Tenure: Leasehold

EPC Energy Efficiency Rating: C

EPC Environmental Impact Rating: C

- Recently rennovated
- Available now
- Unfurnished
- Gym, swimming pool and concierge
- Desirable location





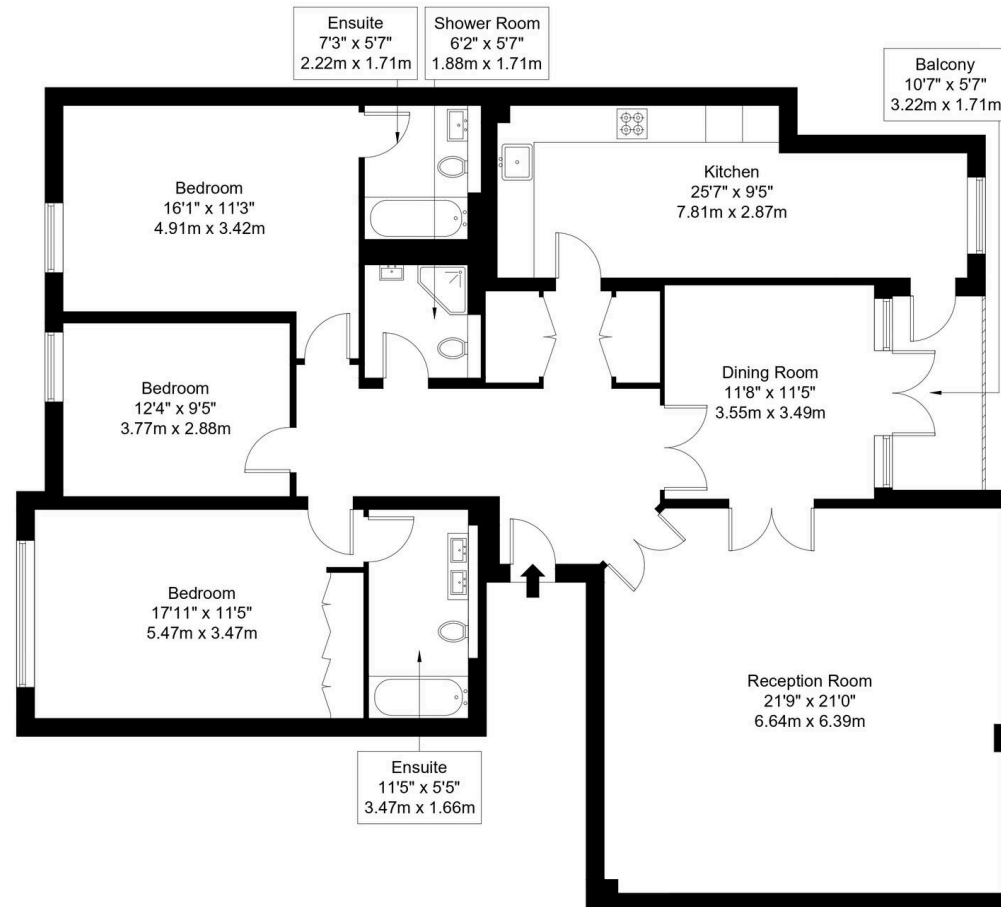


# Westfield, NW3 7SF

Approx Gross Internal Area = 161.8 sq m / 1742 sq ft

Balcony = 5.5 sq m / 59 sq ft

Total = 167.3 sq m / 1801 sq ft



Third Floor

Ref :

Copyright

**B L E U**  
**P L A N**

The Floor plan is not to scale and measurements and areas shown are approximate and therefore should be used for illustrative purposes only. The plan has been prepared in accordance with the RICS code of Measuring Practice and whilst we have confidence in the information produced it must not be relied on. Maximum lengths and widths are represented on the floor plan. If there is any aspect of particular importance, you should carry out or commission your own inspection of the property.

Copyright @ BleuPlan





## Black Katz

22 West Hampstead Mews, London - NW6 3BB

02073285000 • [Thomas@blackkatz.com](mailto:Thomas@blackkatz.com) • [blackkatz.com/](https://blackkatz.com/)