





1 Linnet Close

Newton-Le-Willows, Newton-Le-Willows

CHAIN FREE. 2-bedroom semi-detached house with a modern kitchen, bathroom, bi-fold doors, and garage. Spacious living room, two good-sized bedrooms, a raised decking area, and a pergola. Council Tax band: B

Tenure: Freehold

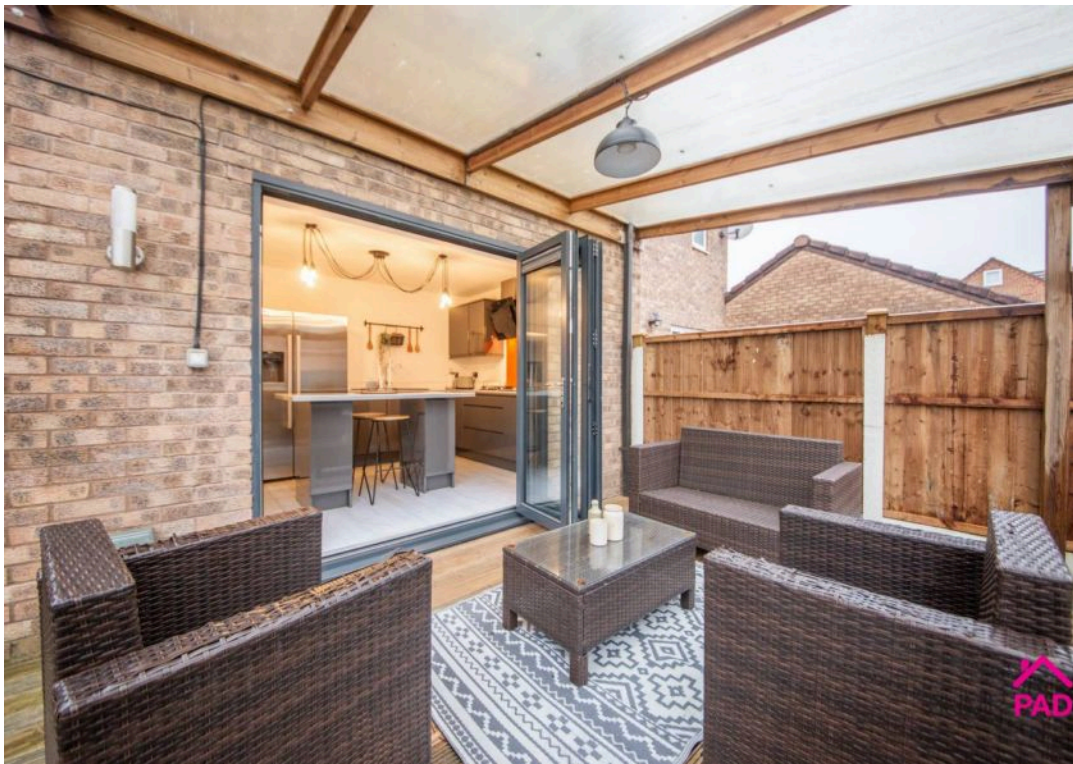
- 2 Bedroom semi-detached property with Garage
- Spacious living room, modern kitchen with an island and Bi-folding doors
- Two good-sized bedroom, modern bathroom
- Low-maintenance rear garden with raised decking, pergola, and paving
- Popular location - close to Newton High Street and Mesnes Park
- NEW Boiler with 5 year warranty
- CHAIN FREE











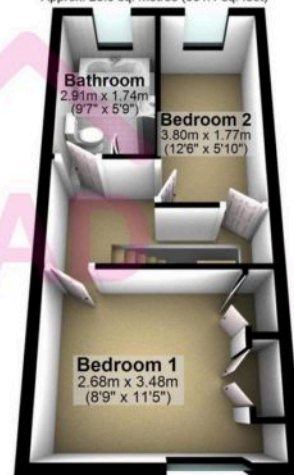
Ground Floor

Approx. 29.8 sq. metres (320.5 sq. feet)



First Floor

Approx. 28.0 sq. metres (301.1 sq. feet)



Total area: approx. 57.7 sq. metres (621.5 sq. feet)

Floor plans are intended to give an indication of the layout only. All images, floor plans and dimensions are not intended to form part of any contract.

Plan produced using PlanUp.