



**Garratt Lane, SW18 4SW**

**Guide price £320,000 LH**

\* Two bedroom maisonette set in prime location







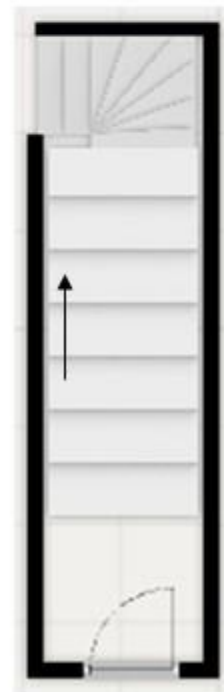
Garratt Lane, SW18 4SW

**Total approx. 50 SQM**

Second Floor



First Floor



Every effort has been made to ensure the accuracy of this floor plan; however, all measurements, dimensions and descriptions of doors, windows, rooms, fixtures and fittings are approximate and for guidance only. No representation or warranty is made as to the accuracy of the plan, and no responsibility is accepted for any errors, omissions or misstatements. This floor plan is provided for illustrative purposes only and does not form part of any offer or contract. Prospective purchasers must rely on their own inspections and enquiries. All services, systems and appliances shown have not been tested, and no guarantee is given as to their condition, operability or efficiency.