



Plots 2 and 3, Bartrop Yard, Westrop, Highworth, SN6 7HJ

£450,000

**richard james**





3, Bartrop Yard, Westrop, Highworth, SN6 7HJ

| EPC Rating - | Council Tax - TBC

 3

 2

 2

## Property Description

### COMING SOON

An exclusive select development, comprising just 3 individual properties within the desirable location of Westrop, Highworth. The properties currently available are PLOT 2 and 3 with an estimated occupation timeframe of December 2025/January 2026. These 3 bedroom detached homes are ECO LOW COST RUNNING PROPERTIES.

These Barn style properties are built with attractive elevations that combine crafted traditional stone details whilst internally the thoughtful design incorporates contemporary living accommodation. The properties will be finished to an excellent standard throughout and will be environmentally conscious with specification boasting features such as an air-sourced heat pump system, underfloor heating throughout the ground and first floor and an electric car charging point.

Both Barn style properties will offer accommodation comprising: entrance hallway, cloakroom, kitchen/breakfast room, study and living room. To the first floor: 3 bedrooms, family bathroom and the master bedroom with en-suite.

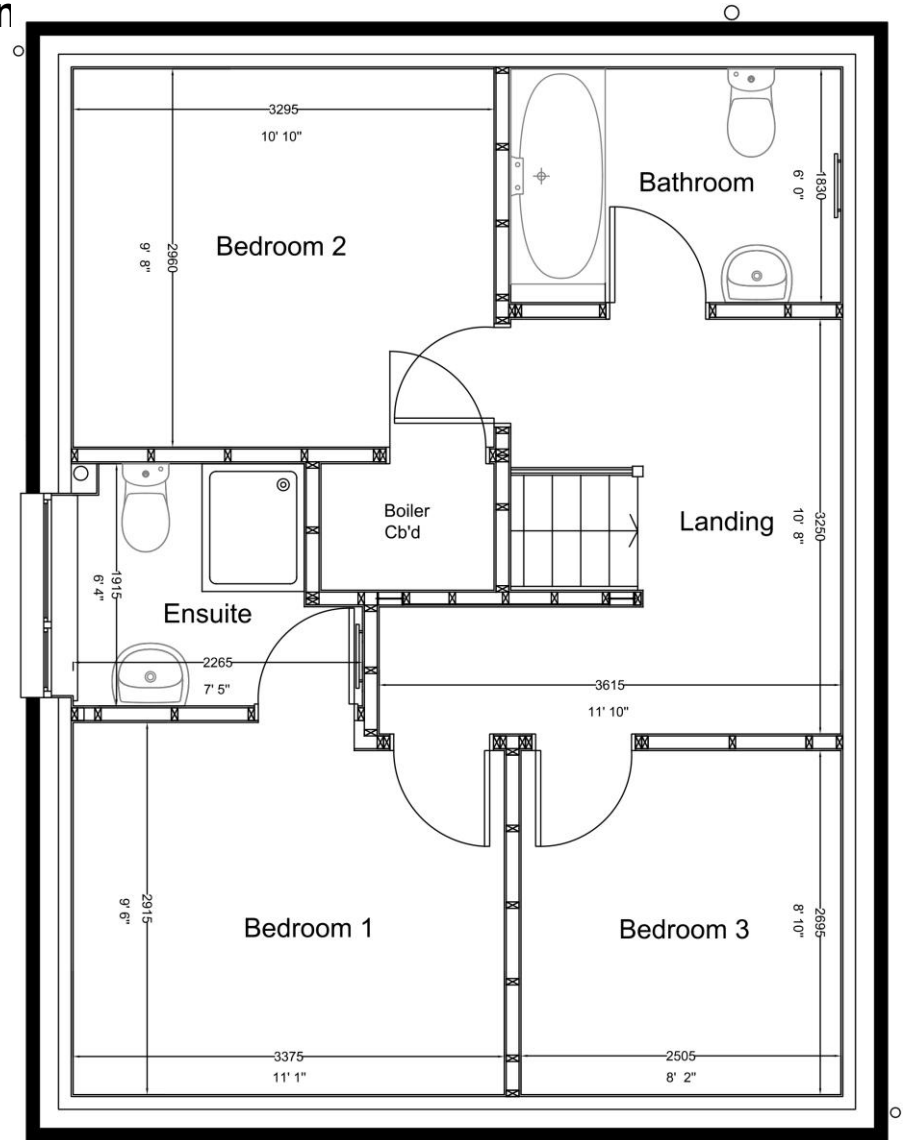
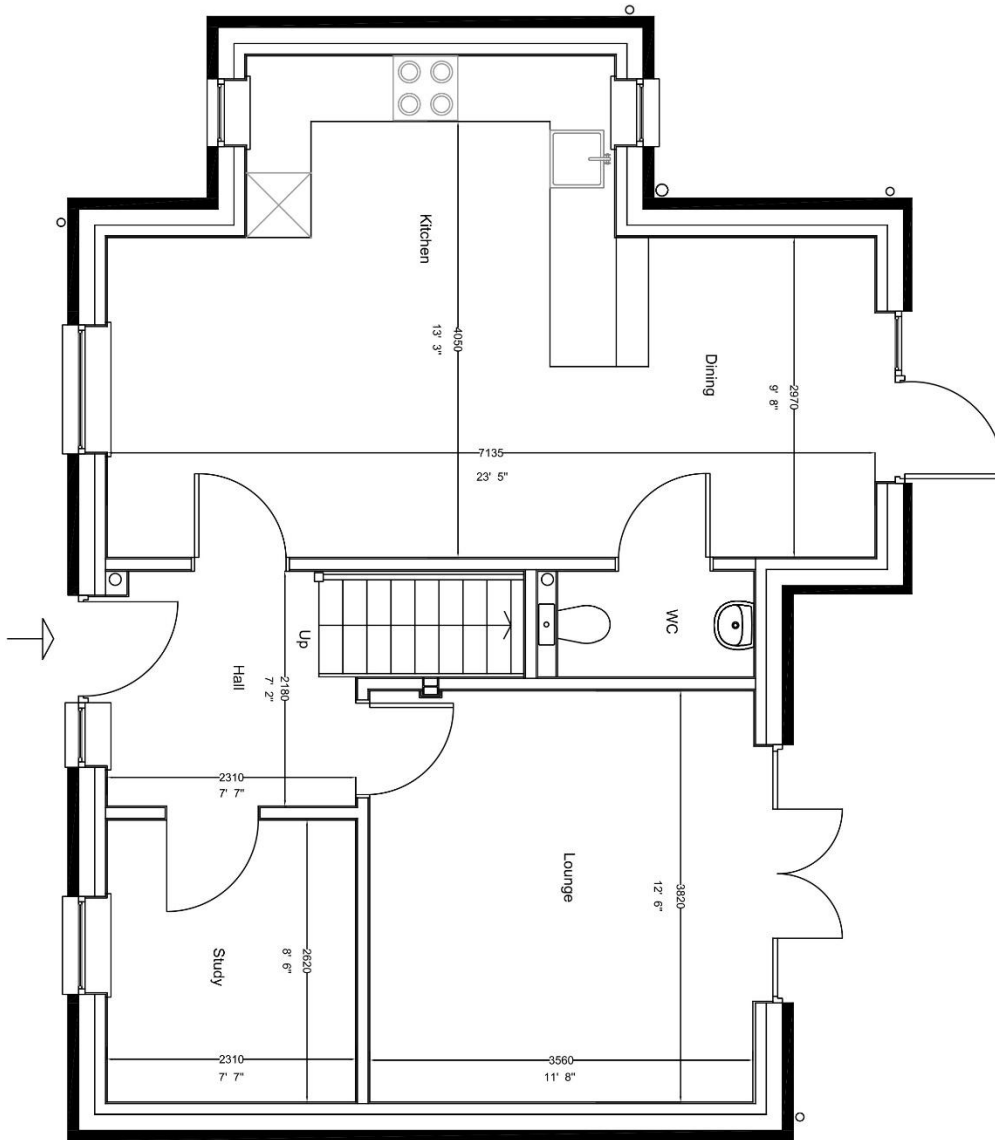
Outside: Each property will benefit from two allocated parking spaces along with EV points, landscaped rear gardens including patio and turf.

These individual properties, we understand to be Freehold with air sourced heating, mains drainage, mains water and electricity. Local Authority- Swindon Borough Council and Council Tax Band TBC.





## Floorplan



Details are subject to approval

### Contact us



Paul Lewis



paullewis@richardjames.uk



36 High Street | Highworth | Swindon | SN6 7AQ

# richard james

richardjames.uk