



**25 Grosvenor Court
Western Road, Ivybridge
PL21 9GH**

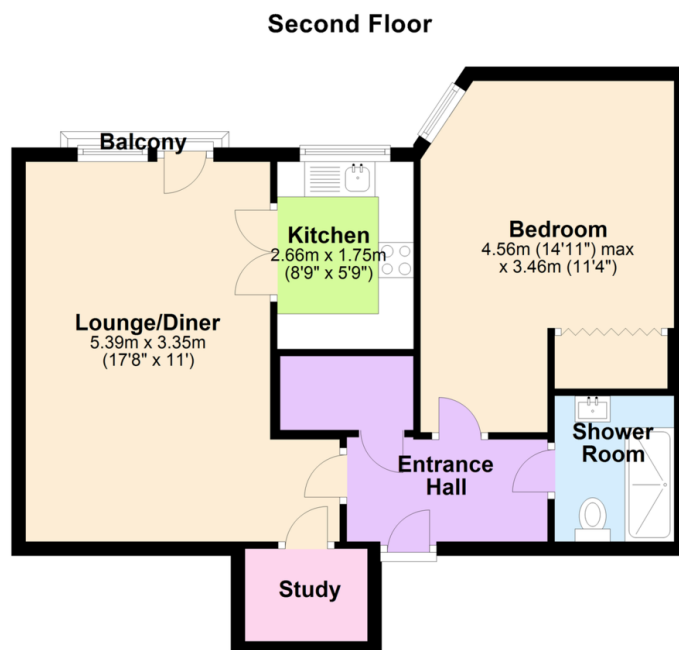
Guide Price £150,000


MILLINGTON TUNNICLIFF

**25 Grosvenor Court
Western Road
Ivybridge
PL21 9GH**



FLOORPLAN



Guide Price £150,000

SUMMARY

A spacious second floor retirement apartment set within the very heart of Ivybridge, convenient to local facilities and amenities. The property was built by McCarthy & Stone in approximately 2005 and benefits from facilities to include two lifts, laundry room, residents lounge, day manager, communal gardens and parking. The property sits on the eastern side of the front block with views towards the moor, with accommodation briefly comprising; entrance hall, living room with large walk in store cupboard, fitted kitchen, shower room and double bedroom with built in wardrobes. The property is double glazed and has electric heating. No chain. EPC C 79.

Spacious One Bedroom Retirement Apartment | Double Glazing & Electric Heating | Communal Facilities | Easterly Views Towards The Moors | Shower Room | Bedroom With Built-In Wardrobes | Fitted Kitchen | Spacious Lounge With Walk-In Storage Cupboard | Second Floor With Access To The Lift | No Onward Chain

CONTACT
19 Fore Street
Ivybridge
Devon
PL21 9AB

EMAIL
info@millingtontunncliff.co.uk

TEL
01752 896020

www.millingtontunncliff.co.uk