



**7 Bittaford Wood, Bittaford
Ivybridge
Devon
PL21 0ET**

Guide Price £210,000

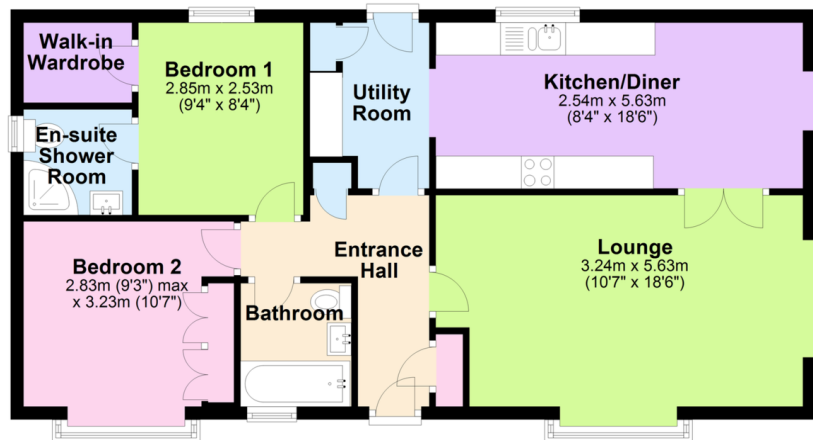

MILLINGTON TUNNICLIFF

7 Bittaford Wood Bittaford Ivybridge Devon PL21 0ET

FLOORPLAN

Ground Floor

Approx. 70.8 sq. metres (762.0 sq. feet)



Total area: approx. 70.8 sq. metres (762.0 sq. feet)



2



2



1



A



EPC

Exempt



762.0
SQFT

Guide Price £210,000

SUMMARY

A modern two double bedroom park home situated in Bittaford Wood Residential Development aimed exclusively at the over 45's. Set in a woodland position, the property is extremely well presented throughout and offers accommodation to include, dual aspect lounge, modern fitted kitchen/diner with adjoining utility room, family bathroom, master en-suite and walk-in dressing room. The property enjoys private gardens to the rear overlooking the adjoining woodland and private parking to the front. EPC Exempt

Less Than 10 Years Old | Private Garden Backing Onto Woodland | Private Parking & Additional Visitor Parking | Family Bathroom | Walk-In Dressing Room | En-Suite Shower Room | Modern Fitted Kitchen/Diner With Integrated Appliances | Dual Aspect Lounge | Two Double Bedrooms | Exclusive Residential Park Home Set In Private Woodland

CONTACT
19 Fore Street
Ivybridge
Devon
PL21 9AB

EMAIL
info@millingtontunnicliff.co.uk

TEL
01752 896020

www.millingtontunnicliff.co.uk