

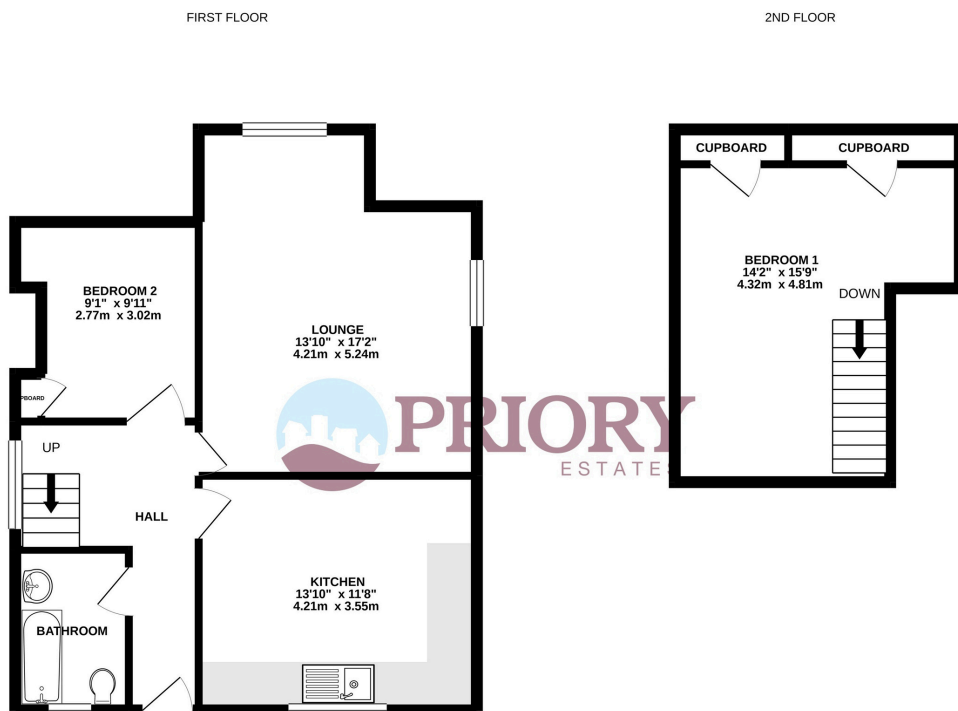


High Street, Walton-On-The-Naze

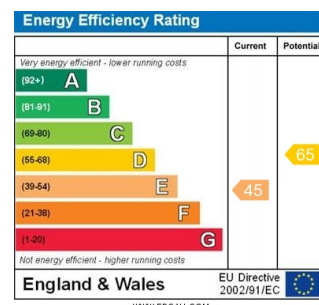
£875 pcm

Ideally situated in the town centre of Walton-On-The-Naze, is this two bedroom split level flat. This property is modern throughout and benefits from being just a short walk to the seafront, local amenities and Walton train station, with links to Colchester and London. Available from January on an unfurnished basis.

- Modern Throughout
- Central Location
- Close to Local Amenities
- Gas Central Heating
- Double Glazing
- Available January



Whilst every attempt has been made to ensure the accuracy of the floorplan contained here, measurements of doors, windows, rooms and any other items are approximate and no responsibility is taken for any error, omission or mis-statement. This plan is for illustrative purposes only and should be used as such by any prospective purchaser. The services, systems and appliances shown have not been tested and no guarantee as to their operability or efficiency can be given.
Made with Metropix ©2021



Council Tax Band
Council Tax Band A

LOCAL AUTHORITY
Tendring District Council

Financial Requirements

A minimum of one month's rent, plus a deposit of £1,005 is required in cleared funds prior to the commencement of the tenancy.

Term

A minimum of 6 months under an Assured Shorthold Tenancy Agreement, with an extension to the contract should both parties agree.

Restrictions

Certain Restrictions have been placed on this property, please ask for details.

Agents Note: Whilst every care has been taken to prepare these particulars, they are for guidance purposes only. All measurements are approximate, are for general guidance purposes only and whilst every care has been taken to ensure their accuracy they should not be relied upon and potential tenants are advised to recheck the measurements.