



28 Brunton Gardens, Markinch – KY7 6EX

Glenrothes

Offers Over **£219,000**





home sweet home
estate agents
your local property experts



28 Brunton Gardens

Markinch, Glenrothes

New for sale a Beautiful Modernised Detached Bungalow in corner plot to head of sought after private cul de sac, walking distance to shops, amenities & train station. Award Winning Home Sweet Home Estate Agents Fife are delighted to present to the market a perfect retirement home in move in condition comprising Entrance Hall - Lounge/ Diner - Modern Fitted Kitchen & Appliances - Two Double Bedrooms - Modern Shower-Room/WC. Benefitting from DG - GCH - EPC C - HOME REPORT £220,000. Externally drive leads to Tandem Garage with second dropped kerb able to provide additional facility for further parking if required. Well maintained garden grounds to front & rear to include summerhouse. View Now!

Council Tax band: D

Tenure: Freehold

EPC Energy Efficiency Rating: C

EPC Environmental Impact Rating: C

- BEAUTIFUL MODERNISED DETACHED BUNGALOW
- DRIVE- TANDEM GARAGE - SECOND DROPPED KERB
- GARDENS TO FRONT & REAR
- LOUNGE/ DINER WITH BAY WINDOW
- MODERN FITTED KITCHEN & APPLIANCES
- TWO DOUBLE BEDROOMS
- MODERN SHOWER-ROOM/WC
- VIEWING HIGHLY RECOMMENDED
- BOXROOM - OAK FACINGS & DOORS



home sweet home
estate agents
your local property experts



GARDEN

GARAGE

Double Garage

OFF STREET

3 Parking Spaces

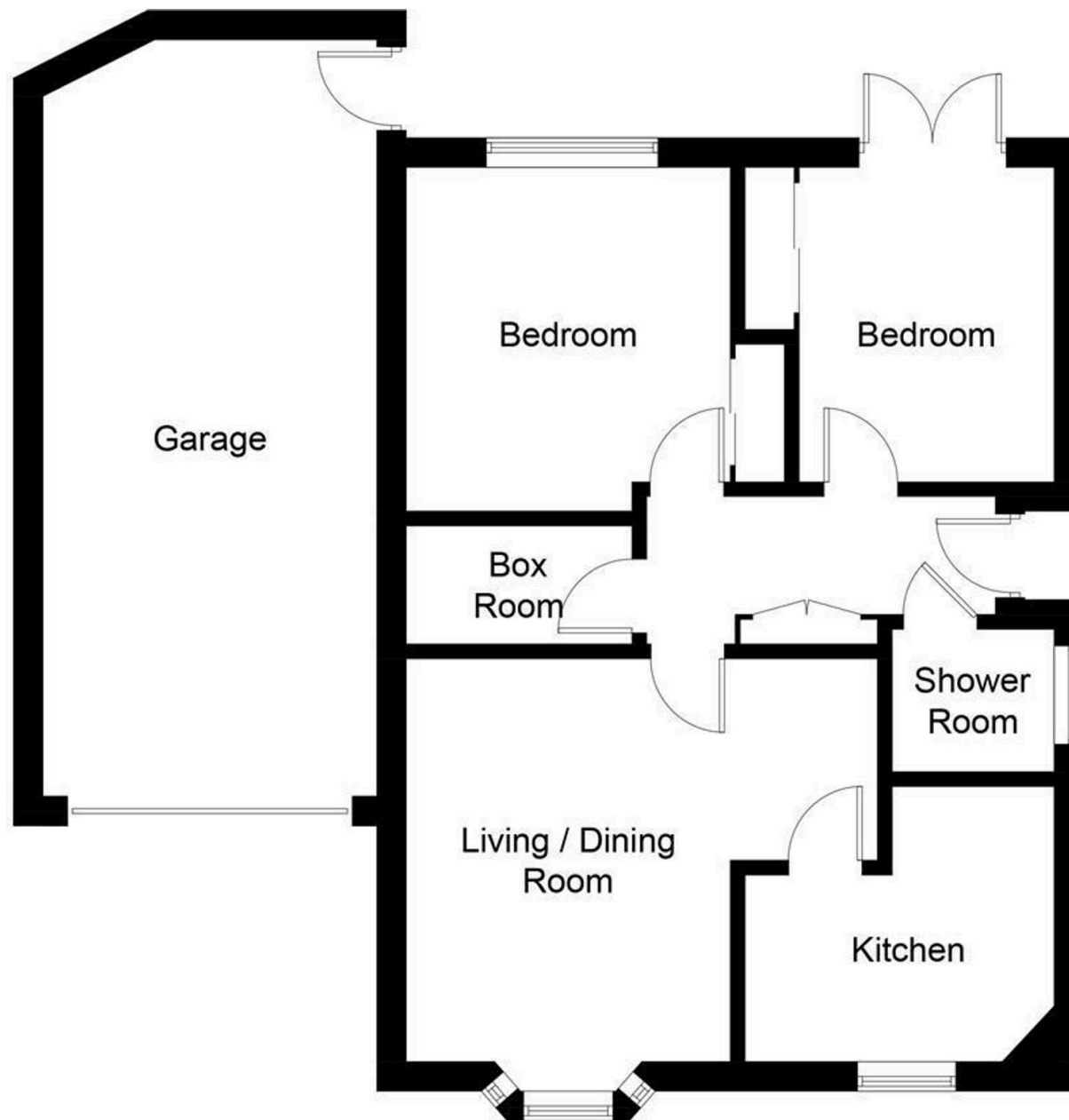
Driveway in front of garage & second dropped kerb to facilitate further parking if required.





Energy Efficiency Rating			
	Current	Potential	
Very energy efficient - lower running costs			
(92+) A			
(81-91) B			
(69-80) C			
(55-68) D			
(39-54) E			
(21-38) F			
(1-20) G			
Not energy efficient - higher running costs			
	73	78	
England, Scotland & Wales		EU Directive 2002/91/EC	

Environmental Impact (CO ₂) Rating			
	Current	Potential	
Very environmentally friendly - lower CO ₂ emissions			
(92+) A			
(81-91) B			
(69-80) C	79	80	
(55-68) D			
(39-54) E			
(21-38) F			
(1-20) G			
Not environmentally friendly - higher CO ₂ emissions			
England, Scotland & Wales		EU Directive 2002/91/EC	



Ground Floor

Illustration for identification purposes only, measurements are approximate,
not to scale. floorplansUsketch.com © (ID497787)



home sweet home
estate agents
your local property experts