



RICHMOND SQUARE PRESENTS
**THE EVELYN HOUSE
COLLECTION**

Only at
RICHMOND SQUARE
RICHMOND UPON THAMES



RICHMOND SQUARE

THE EVELYN HOUSE COLLECTION

Richmond Square presents Evelyn House, an elegant collection of one and two bedroom apartments that seamlessly blend rich heritage with contemporary elegance.

Each residence boasts beautifully styled interiors, high ceilings, and a central London specification, ensuring a perfect balance of luxury and comfort. Many apartments feature private terraces with stunning views over the Old Deer Park, Kew Gardens, Central London, and the tranquil landscaped courtyard.

Residents will enjoy the convenience of a concierge service and the serenity of a newly designed landscaped square, making Richmond Square the ultimate destination for sophisticated living.

AN EXCLUSIVE DEVELOPMENT
BY RER LONDON AND BLUE COAST CAPITAL



**BEST RESIDENTIAL
DEVELOPMENT**

RICHMOND'S EXCEPTIONAL ADDRESS NOW AWARD-WINNING

**Richmond Square has been honoured with the prestigious Best Residential Development,
London accolade in the UK section of the International Property Awards 2025.**

This award celebrates Richmond Square as one of London's most distinguished addresses,
where timeless heritage and refined contemporary living come together. Behind its
historic façade lies a collection of exquisitely crafted residences, each offering a rare blend
of character, elegance, and modern comfort.



THE CONCIERGE
ENTRANCE



CONVENIENCE AND TRANQUILITY

THE EVELYN HOUSE COLLECTION



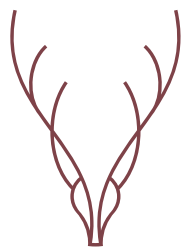
INNER COURTYARD GARDEN

A SERENE GARDEN OASIS

PERFECTLY LOCATED

The Royal Borough of Richmond upon Thames sits along a scenic stretch of the River Thames linking Hampton Court Palace, Richmond Town Centre and Kew Gardens. Richmond is known for its riverside views, historic green and Richmond Park with its famous deer. The town offers vibrant culture with theatres, galleries and a museum plus excellent sporting connections – from polo at Ham and rugby at Twickenham to tennis at Wimbledon and rowing on the Thames. Just under ten miles from central London and 7.4 miles from Heathrow, Richmond combines local charm with easy access to the capital’s world-class culture, business and transport links.





RICHMOND SQUARE

THE EVELYN HOUSE COLLECTION









TWO
BEDROOM
APARTMENT
04

- Beautiful open plan apartment with impressive 3.7m ceiling height
- Large double doors open onto the spacious open plan living, dining and kitchen area
- Principal bedroom with ensuite bathroom and separate shower
- Split-level stair from walk in wardrobe to principal bedroom
- Family bathroom with dual access from second bedroom and entrance hall



UPPER GROUND
FLOOR



Ref: E01/UG13

Room sizes are approximate.
The layout of certain apartments and communal
areas may vary and are subject to change.

LIVING AREA
7.10m x 4.19m | 23'4" x 13'9"

PRINCIPAL BEDROOM
7.87m x 3.03m | 25'10" x 9'11"

BEDROOM TWO
4.68m x 3.54m | 15'4" x 11'7"

APARTMENT AREA
86.6m² | 932ft²

ONE
BEDROOM
APARTMENT
06

- Stylish apartment with impressive 3.7m floor to ceiling heights
- Open plan living, kitchen and dining area with large retained timber sash windows
- Double bedroom with fitted wardrobes
- Dual use ensuite bathroom and separate shower accessed from the bedroom or living space



UPPER GROUND
FLOOR



Ref: E03/UG15

Room sizes are approximate.
The layout of certain apartments and communal
areas may vary and are subject to change.

LIVING AREA
6.15m x 4.80m | 20'2" x 15'9"

BEDROOM
4.00m x 4.00m | 13'1" x 13'1"

APARTMENT AREA
55.3m² | 595ft²

ONE
BEDROOM
APARTMENT
07

- Light-filled open plan living area
- Fully glazed bay window to living, dining and kitchen area to maximise light
- Further bay window to bedroom
- Luxurious ensuite bathroom with separate shower
- Fitted wardrobe to bedroom
- 3.5m floor to ceiling height



UPPER GROUND
FLOOR



LIVING AREA
6.17m x 4.94m | 20'3" x 16'2"

BEDROOM
4.25m x 3.34m | 13'11" x 10'11"

APARTMENT AREA
50.3m² | 541ft²

Ref: E04/UG16

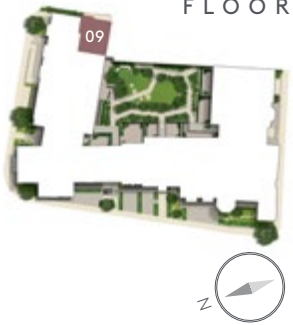
Room sizes are approximate.
The layout of certain apartments and communal
areas may vary and are subject to change.

ONE
BEDROOM
APARTMENT
09

- Open plan living area with split-level steps/stair from entrance hall and generous 2.3m floor to ceiling height
- 2.8m floor to ceiling height to kitchen
- Luxurious ensuite bathroom with separate shower
- Fitted wardrobe to double bedroom



UPPER GROUND
FLOOR



LIVING / DINING
4.93m x 2.99m | 16'2" x 9'10"

KITCHEN
3.00m x 2.90m | 9'10" x 9'6"

BEDROOM
3.60m x 3.22m | 11'10" x 10'7"

APARTMENT AREA
50m² | 538ft²

Ref: E06/UG18

Room sizes are approximate.
The layout of certain apartments and communal
areas may vary and are subject to change.

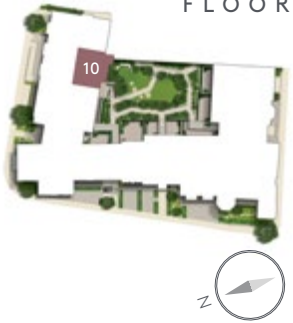


ONE
BEDROOM
APARTMENT
10

- Stunning one bedroom apartment facing on to private landscaped courtyard
- Stylish bedroom with ensuite bathroom and separate shower
- Spacious open plan living area with 3.5m ceiling height
- Full height patio doors and glazing
- Large terrace overlooking Richmond Square gardens
- Fitted wardrobes to bedroom



UPPER GROUND
FLOOR



LIVING AREA
6.10m x 4.92m | 20'0" x 16'2"

BEDROOM
3.82m x 3.60m | 12'6" x 11'10"

TERRACE
6.5m x 2.0m | 21'3" x 6'5"

APARTMENT AREA
54m² | 581ft²

TERRACE AREA
9m² | 96ft²

Ref: E07/UG19

Room sizes are approximate.
The layout of certain apartments and communal
areas may vary and are subject to change.



ONE
BEDROOM
APARTMENT
11

- Open plan living area facing on to private landscaped courtyard with 3.7m floor to ceiling height
- Double doors to Juliet overlooking courtyard from living area
- Fitted wardrobes to bedroom
- Dual use ensuite bathroom and separate shower accessed from the bedroom or living space



UPPER GROUND
FLOOR



LIVING AREA
5.15m x 4.86m | 16'11" x 15'11"

BEDROOM
3.60m x 3.43m | 11'10" x 11'4"

APARTMENT AREA
49.2m² | 529ft²

Ref: E08/UG20

Room sizes are approximate.
The layout of certain apartments and communal
areas may vary and are subject to change.



TWO
BEDROOM
APARTMENT
12

- Dual aspect apartment with views towards the park and private landscaped courtyard
- Open plan living area with tall retained feature windows inset into ceiling level
- Courtyard facing principal bedroom with fitted wardrobes and ensuite bathroom with separate shower
- Second single bedroom/ study/ dining space
- Guest shower room



LIVING AREA
5.36m x 3.86m | 17'7" x 12'8"

PRINCIPAL BEDROOM
3.96m x 3.85m | 13'0" x 12'8"

BEDROOM TWO
3.71m x 2.13m | 12'2" x 7'0"

APARTMENT AREA
67.8m² | 729ft²

Ref: E15/120

Room sizes are approximate.
The layout of certain apartments and communal
areas may vary and are subject to change.



ONE
BEDROOM
APARTMENT
13

- Elegant open plan living area with retained tall feature window inset into ceiling level
- Large enclosed dressing space off bedroom and double doors to ensuite bathroom and separate shower



LIVING AREA
5.28m x 4.23m | 17'4" x 13'11"

BEDROOM
3.23m x 2.96m | 10'7" x 9'9"

APARTMENT AREA
51.7m² | 556ft²

Ref: E16/121

Room sizes are approximate.
The layout of certain apartments and communal
areas may vary and are subject to change.



TWO
BEDROOM
APARTMENT
14

- Spacious corner apartment with views towards Kew Gardens and parks
- Large open plan living, dining and kitchen area
- Retained tall feature windows inset into ceiling level of the living area



LIVING AREA
7.80m x 5.33m | 25'7" x 17'6"

PRINCIPAL BEDROOM
3.92m x 3.74m | 12'10" x 12'3"

BEDROOM TWO
4.63m x 3.04m | 15'2" x 10'0"

APARTMENT AREA
105.3m² | 1,133ft²



- Retained tall feature windows to principal bedroom with ensuite bathroom and separate shower
- Built in wardrobes to walk in dressing area off principal bedroom
- Large second bedroom with full width built in wardrobes
- Dual use ensuite bathroom and separate shower accessed from the second bedroom or lobby area

Ref: E17/122

Room sizes are approximate.
The layout of certain apartments and communal areas may vary and are subject to change.



ONE
BEDROOM
APARTMENT
15

- Elegant open plan apartment featuring large retained timber sash windows
- Fitted wardrobes to bedroom and dual use ensuite bathroom and separate shower with additional access to the living area
- 2.7m floor to ceiling height



LIVING AREA
6.15m x 4.82m | 20'2" x 15'10"

BEDROOM
4.02m x 3.97m | 13'2" x 13'0"

APARTMENT AREA
54.8m² | 590ft²

Ref: E09/114

Room sizes are approximate.
The layout of certain apartments and communal
areas may vary and are subject to change.



ONE
BEDROOM
APARTMENT
16

- Light-filled open plan living area
- Fully glazed bay window to living, dining and kitchen area to maximise light
- Further bay window to bedroom
- Double doors from bedroom to ensuite bathroom and separate shower
- 2.7m floor to ceiling height



FIRST
FLOOR



LIVING AREA
6.40m x 4.93m | 21'0" x 16'2"

BEDROOM
4.26m x 3.35m | 14'0" x 11'0"

APARTMENT AREA
50.3m² | 541ft²

Ref: E10/115

Room sizes are approximate.
The layout of certain apartments and communal
areas may vary and are subject to change.



ONE
BEDROOM
APARTMENT
17

- Elegant open plan apartment featuring large retained timber sash windows
- Large double doors open on to balcony area
- Fitted wardrobes to bedroom
- Luxurious bathroom with separate shower
- 2.7m floor to ceiling height



LIVING AREA
5.31m x 3.62m | 17'5" x 11'11"

KITCHEN
2.39m x 2.26m | 7'10" x 7'5"

BEDROOM
4.32m x 3.02m | 14'2" x 9'11"

BALCONY
2.1m x 0.3m | 6'8" x 0'9"

APARTMENT AREA
48.9m² | 526ft²

BALCONY AREA
0.75m² | 8ft²

Ref: E11/116

Room sizes are approximate.
The layout of certain apartments and communal
areas may vary and are subject to change.



ONE
BEDROOM
APARTMENT
18

- Open plan living area with balcony area from double doors
- Separate walk in dressing area off bedroom
- Luxurious ensuite bathroom with separate shower
- 2.6m floor to ceiling height



LIVING AREA
7.73m x 3.50m | 25'4" x 11'6"

BEDROOM
3.25m x 3.13m | 10'8" x 10'3"

BALCONY
2.1m x 0.3m | 6'8" x 0'9"

APARTMENT AREA
49.9m² | 537ft²

BALCONY AREA
0.75m² | 8ft²

Ref: E12/117

Room sizes are approximate.
The layout of certain apartments and communal
areas may vary and are subject to change.



ONE
BEDROOM
APARTMENT
19

- Sits within the newly built Art Deco part of Evelyn house
- Open plan living area with Juliet balcony
- Views over the private landscaped courtyard
- Fitted wardrobe to bedroom
- Dual use ensuite bathroom and separate shower accessed from the bedroom or living space
- Living area floor to ceiling height 2.7m



LIVING AREA
6.15m x 4.93m | 20'2" x 16'2"

BEDROOM
3.76m x 3.60m | 12'4" x 11'10"

APARTMENT AREA
54m² | 581ft²

Ref: E13/118

Room sizes are approximate.
The layout of certain apartments and communal
areas may vary and are subject to change.



TWO
BEDROOM
APARTMENT
20

- Views over the private landscaped courtyard
- Open plan living area with Juliet balcony
- Principal bedroom with ensuite bathroom, separate shower and fitted wardrobes
- Second double bedroom suite with shower room and walk in dressing area
- Living area floor to ceiling height 2.7m



LIVING AREA
5.37m x 4.59m | 17'7" x 15'1"

PRINCIPAL BEDROOM
3.06m x 2.83m | 10'0" x 9'3"

BEDROOM TWO
3.00m x 2.96m | 9'10" x 9'9"

APARTMENT AREA
63.8m² | 687ft²



Ref: E14/119

Room sizes are approximate.
The layout of certain apartments and communal
areas may vary and are subject to change.



TWO
BEDROOM
APARTMENT
22

- Unique roof space apartment with private outside balcony space facing towards the park
- Large open plan living dining and kitchen area with new dormer windows and electronically operated blinds to roof light
- Fixed skylight to entrance hall and second bedroom with electronically operated blinds



SECOND
FLOOR



- Spacious principal bedroom with fitted wardrobes and ensuite shower room
- Second bedroom with private ensuite bathroom
- 2.6m floor to ceiling height in living spaces

LIVING AREA
6.14m x 4.91m | 20'2" x 16'1"

PRINCIPAL BEDROOM
5.97m x 5.19m | 19'7" x 17'0"

BEDROOM TWO
3.12m x 2.69m | 10'3" x 8'10"

TERRACE
4.1m x 2.1m | 13'4" x 6'8"

APARTMENT AREA
84.7m² | 912ft²

TERRACE AREA
8m² | 86ft²

Ref: E25/220

Room sizes are approximate.
The layout of certain apartments and communal
areas may vary and are subject to change.



ONE
BEDROOM
APARTMENT
23

- Stylish apartment with generous 2.6m floor to ceiling height in the living spaces
- Open plan living, kitchen and dining area with large retained timber sash windows
- Fitted wardrobes to bedroom



LIVING AREA
6.18m x 4.78m | 20'3" x 15'8"

BEDROOM
4.00m x 3.96m | 13'1" x 13'0"

APARTMENT AREA
54.8m² | 590ft²

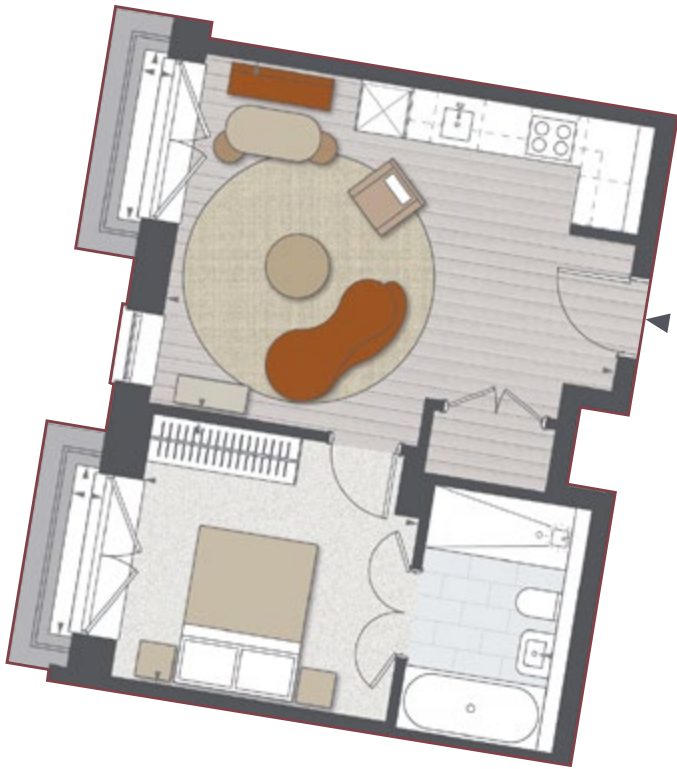
Ref: E18/213

Room sizes are approximate.
The layout of certain apartments and communal
areas may vary and are subject to change.



ONE
BEDROOM
APARTMENT
24

- Light-filled open plan living area
- Fully glazed bay window to living, dining and kitchen area to maximise light
- Further bay window to bedroom
- Fitted wardrobes to bedroom
- Double doors from bedroom to ensuite bathroom and separate shower
- 2.6m floor to ceiling height



SECOND
FLOOR

LIVING AREA
5.58m x 4.47m | 18'4" x 14'8"

BEDROOM
3.48m x 3.36m | 11'5" x 11'0"

BALCONY
2.1m x 0.3m | 6'8" x 0'9"

APARTMENT AREA
44.7m² | 481ft²

BALCONY AREA
1.5m² | 16ft²

Ref: E19/214

Room sizes are approximate.
The layout of certain apartments and communal
areas may vary and are subject to change.



TWO
BEDROOM
APARTMENT
25

- Unique open plan apartment
- Double doors from living area open on to Juliet balcony
- Guest shower room from lobby
- 2.6m floor to ceiling height in living spaces

- Principal bedroom with ensuite bathroom, separate shower and fitted wardrobes
- Further double bedroom

LIVING AREA
6.44m x 4.12m | 21'2" x 13'6"

PRINCIPAL BEDROOM
5.04m x 3.03m | 16'6" x 9'11"

BEDROOM TWO
3.90m x 2.65m | 12'10" x 8'8"

APARTMENT AREA
75.5m² | 813ft²

Ref: E20/215

Room sizes are approximate.
The layout of certain apartments and communal
areas may vary and are subject to change.

SECOND
FLOOR



TWO
BEDROOM
PENTHOUSE
26

UPPER FLOOR

- Large open plan reception and living area, skylight with electric blinds and wide sliding patio doors leading to the impressive roof terrace
- Terrace views towards the Great Pagoda at Kew Gardens. Additional views from courtyard balcony
- Living area floor to ceiling height 2.7m



ENTRANCE FLOOR

PRINCIPAL BEDROOM
3.70m x 3.62m | 12'2" x 11'11"

BEDROOM TWO
3.26m x 2.77m | 10'8" x 9'1"

UPPER FLOOR

LIVING AREA
7.06m x 5.50m | 23'2" x 18'1"

TERRACE
5.6m x 3.9m | 18'3" x 12'7"

APARTMENT AREA
79.3m² | 853ft²

TERRACE AREA
24m² | 258ft²

SECOND + THIRD
FLOOR



ENTRANCE FLOOR

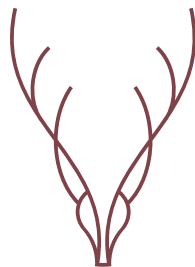
- Entrance hall with elegant stairs and handrail to upper floor
- Principal bedroom with fitted wardrobe and ensuite double bathroom with sliding door to divide into one ensuite bathroom, one dual use family/guest shower room
- Further double bedroom with fitted wardrobes and Juliet balcony facing on to the private landscaped courtyard
- Entrance floor ceiling height 2.6m

Ref: E21/216

Room sizes are approximate.
The layout of certain apartments and communal
areas may vary and are subject to change.



An exclusive development
by RER London and Blue Coast Capital



RICHMOND
SQUARE

KEW FOOT ROAD
RICHMOND UPON THAMES
TW9 2TE

ALL ENQUIRIES
0203 369 0169
richmondsq.co.uk

The information in this document is intended as a guide only and is subject to change without prior notice. Accordingly, due to the Richmond Square policy of continual improvement, the finished product may vary from the information provided and Richmond Square reserves the right to amend the specification. Photography shown may be of similar apartments at Richmond Square and is indicative only. All dimensions stated are approximate only with maximum dimensions and may alter through the construction phase and with interior finishes. You are therefore advised not to order any carpets, appliances or other goods which depend upon accurate dimensions before carrying out a check measure within your reserved property.

Brochure designed and produced by Craven Group ©2026 | craven-property.com



RICHMOND'S FINEST

PRICES £650,000 - £1,500,000
MOVE IN SPRING 2026



BEST RESIDENTIAL
DEVELOPMENT

Elegant, award-winning homes now available.
Book your private viewing today.

0203 369 0169
sales@richmondsq.co.uk

Richmond Square
Kew Foot Road
Richmond TW9 2TE



Only at
RICHMOND
SQUARE

AN EXCLUSIVE DEVELOPMENT BY
RER LONDON AND BLUE COAST CAPITAL

richmondsq.co.uk