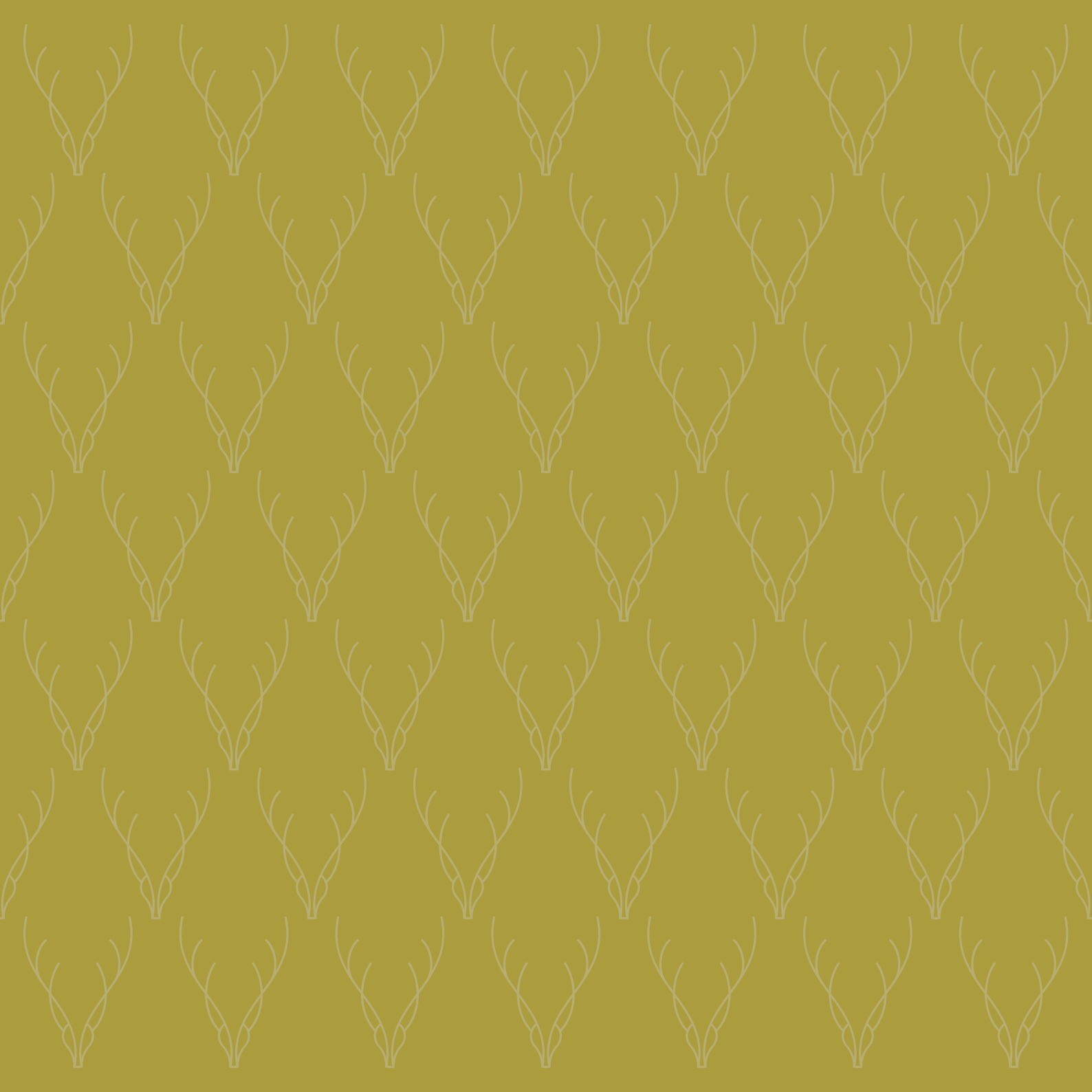




# PERFECTLY LOCATED

RICHMOND SQUARE  
RICHMOND UPON THAMES



Hi,

Whenever I travel around the UK, staying in various cities and towns, I find it useful to know exactly where to find the best places to eat, drink, shop or just chill out. Even when I think I know the area quite well, I can still be pleasantly surprised by the discovery of a new restaurant or bar.

With this in mind, I commissioned this guide to Richmond. Of course, it's not a comprehensive listing of everything that's on offer, it's just my personal selection of boutique restaurants, clubs, salons and spas and other venues that have been recommended to me.

I haven't had time to sample them all as yet - so I'd be glad to hear what you think of them; feedback is always important!

I hope you find the guide both informative and interesting.

Best wishes

*John Roberts*  
Property Consultant



ROYAL RICHMOND  
06

GREEN AND PLEASANT LAND  
10

ARTS AND CULTURE  
14

RESTAURANTS  
20

PUBS AND BARS  
26

HOTELS  
30

SPORTING PURSUITS  
34

ANNUAL HIGHLIGHTS  
38



RETAIL THERAPY  
42

SWEET TREATS  
46

MARKETS AND WINE MERCHANTS  
48

FLORISTS  
50

BEAUTY AND FITNESS  
52

EDUCATION  
56

TRANSPORT CONNECTIONS  
64





## ROYAL RICHMOND PALACES AND RESIDENCES

### HAMPTON COURT PALACE

An impressive historical royal palace and a favourite royal residence of the infamous Henry VIII. One can explore staterooms and apartments, marvel at recreations of crowns and kitchens, as well as discover the world famous gardens. With the UK's oldest surviving hedge maze, and daily costumed talks and tours, a visit to Hampton Court Palace makes for a perfect family day out.

Hampton Court Palace can be accessed from Richmond by bus, train, car, bike and boat (seasonal). If travelling during peak times, there may be limited space in the parking area onsite. Hampton Court Green, Hampton Court Train Station and Bushy Park are alternative car parks a short walk away.

East Molesey KT8 9AU

033 3320 6000

[hrp.org.uk](http://hrp.org.uk)

### MARBLE HILL HOUSE

Set in beautiful riverside parkland near Richmond, this elegant Eighteenth Century retreat was built for Henrietta Howard, mistress of King George II when he was Prince of Wales. The grand interiors and paintings makes it one of the best places to capture the atmosphere of fashionable Georgian life.

From Richmond, Marble Hill House can be accessed by bus and car. It is also a walk away from St Margarets and Twickenham train station.

Richmond Road  
Twickenham TW1 2NL

020 8892 1900

[english-heritage.org.uk](http://english-heritage.org.uk)

### HAM HOUSE AND GARDEN

One of the grandest Stuart houses in England, this rare Seventeenth Century survival of luxury was given as a gift from King Charles I, to friend and courtier, William Murray, and was later transformed into the house we know today by William's daughter and her husband. Recognised for its paintings, textiles and furniture as well as being one of the most haunted houses in Britain, it makes for a great historical visit. Ham House is a National Trust treasure trove where one can explore extensive gardens, eat produce from the garden and get involved with activities and events all year round.

From Ham House, there are cycle trails and walks to Richmond. It can also be accessed by both bus and car, with free parking at the riverside car park at the end of Ham Street.

Ham Street, Ham  
Richmond TW10 7RS

020 8940 1950

[nationaltrust.org.uk](http://nationaltrust.org.uk)

RICHMOND SQUARE  
RICHMOND UPON THAMES





HAMPTON COURT  
PALACE



## ROYAL RICHMOND PALACES AND RESIDENCES



SYON HOUSE AND PARK

### SYON HOUSE AND PARK

The spectacular London home of the Duke of Northumberland. This Sixteenth Century build has many layers of history. The house holds a wealth of art and over 400 years worth of turbulent history within its grand classical interiors. One can view the state and private apartments within 40 acres of gardens. Syon Park contains the Great Conservatory, marvellous gardens and spectacular parklands. The house and the park are beautiful and a must see on a summer's day.

From Richmond, Syon House and Park can be accessed by bus, bike and car, with free parking for visitors. The vehicle entrance is best located from Park Road, Isleworth TW7 6AZ.

Syon Park  
Brentford TW8 8JF  
020 8560 0882  
[syonpark.co.uk](http://syonpark.co.uk)





## GREEN AND PLEASANT LAND

### BUSHY PARK

Another of London's impressive Royal Parks. Bushy Park is linked with Hampton Court Palace by the Longford River. Roaming Red and Fallow Deer can be seen throughout Bushy Park, while The Diana Fountain, Upper Lodge Water Gardens and the Waterhouse Woodland Garden all complement Bushy Park's natural beauty.

10

From Richmond, the park is accessible by bus, train and car. The Park has four car parks.

**Hampton Court Road  
Hampton TW11 0EQ**

**0300 061 2250  
royalparks.org.uk**

### ROYAL BOTANICAL GARDENS, KEW

Kew Gardens is one of the world's greatest botanical gardens and London's largest UNESCO World Heritage Site. Kew Gardens is also renowned for its scientific research and vast plant collections. For years, it has brought people from far and wide to celebrate the diversity and beauty of the plant kingdom. One can explore enchanting gardens and glasshouses, discover nearly 2,000 years of plant knowledge in the botanical library, or simply enjoy a stroll along the Great Broad Walk Borders.

Kew Gardens can be accessed by tube, bus, bike, car and boat (seasonal). The nearest entrance to Richmond is Lion Gate TW9 2DF. Alternatively, you can enter other gates from Kew Gardens Station, Kew Bridge Station or Kew's Ferry Lane car park.

**Kew  
Richmond TW9 3AE  
020 8332 5655  
kew.org**

### RICHMOND PARK

Richmond Park is one of London's eight Royal Parks and covers an area of 2,500 acres. The park is a great way to enjoy long walks, cycling and nature. One can walk through The Isabella Plantation and discover the biodiversity of London's largest Site of Special Scientific Interest. Red and Fallow Deer live within the park as well as a huge variety of invertebrates, birds and ancient trees. King Henry's Mound is unmissable, providing panoramic views of the Thames Valley to the west and a protected view of St Paul's Cathedral to the east. Playgrounds and a range of sports and activities are available throughout the park, making it the perfect family day out.

Richmond Park is best accessed by bus or car, with a variety of accessible car parks and gates.

**Richmond TW10 5HS  
0300 061 2200  
royalparks.org.uk**

**RICHMOND SQUARE  
RICHMOND UPON THAMES**



**ROYAL BOTANICAL  
GARDENS, KEW**





RICHMOND HILL  
VIEWPOINT



## GREEN AND PLEASANT LAND

### RICHMOND GREEN

A picturesque recreational space, near Richmond High Street. Explore the area around Richmond Green to find the ruins of Richmond Palace.

Richmond Green  
Richmond TW9 1LX  
[richmond.gov.uk](http://richmond.gov.uk)

### RICHMOND HILL VIEWPOINT

A popular visitors' spot and viewpoint of the River Thames and stunning low lying meadowland. An Act of Parliament preserves the view.

Richmond Hill Terrace  
Richmond TW10 6RN  
[discoveringbritain.org](http://discoveringbritain.org)



RICHMOND GREEN

RICHMOND SQUARE  
RICHMOND UPON THAMES





RICHMOND THEATRE



## ARTS AND CULTURE

### RICHMOND THEATRE

This beautiful theatre attracts a quarter of a million theatregoers each year with a wide range of performances including drama, musicals, opera and dance. Richmond Theatre works closely with Richmond Theatre Trust to provide arts experiences for members of the community who experience barriers to theatregoing. There are events, workshops and summer school activities all year, as well as guided tours. Richmond Theatre is a venue that brings everyone in the community together, whether you're a local arts organisation, charity or an audience member.

1 Little Green  
Richmond TW9 1QH

TELEPHONE BOOKING  
0333 009 6690

STAGE DOOR  
020 8332 4500

[atgtickets.com](http://atgtickets.com)

### ORANGE TREE THEATRE

Attracting thousands of people each year, this unique 'in the round' space allows the audience to become truly immersed in the performance. The Orange Tree is known for discovering and promoting new writers as well as established writers -so there's something for everyone. This is a remarkable theatre revealing stories, old and new, brought to life by talented writers and skilled actors.

1 Clarence Street  
Richmond TW9 2SA

BOX OFFICE  
020 8940 3633

[orangetreetheatre.co.uk](http://orangetreetheatre.co.uk)

### CURZON CINEMA RICHMOND

Set in an auditorium designed in the style of a theatre, this elegant and distinctive cinema offers a packed schedule of films as well as opera and theatre screenings. Soak up the atmosphere at this, Richmond's favourite local cinema.

Water Lane  
Richmond TW9 1TJ

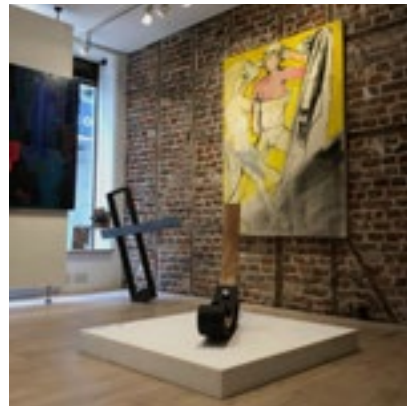
01233 555 644  
[curzoncinemas.com](http://curzoncinemas.com)

RICHMOND SQUARE  
RICHMOND UPON THAMES





## ARTS AND CULTURE



ONE PAVED COURT

### GARRICK'S TEMPLE TO SHAKESPEARE

Garrick's Temple to Shakespeare on the riverside at Hampton was built by the great Eighteenth Century actor manager David Garrick in 1756 to celebrate the genius of William Shakespeare. Garrick used the temple to house his extensive collection of Shakespearean relics and for entertaining his family and friends. The temple now houses a Garrick exhibition, featuring reproductions of works by major Eighteenth Century artists including Gainsborough, Reynolds, Hogarth and Zoffany.

Hampton Court Road  
Hampton TW12 2EJ  
07880 790 763  
garrickstemple.org.uk

### MUSEUM OF RICHMOND

The Museum of Richmond relates the story of Richmond from prehistory, charting its changing status over the centuries from medieval royal residence to the centre of arts and fashion we know today. This rich history can be accessed through permanent displays, exhibitions, workshops and events of all types for all ages.

2nd Floor  
Old Town Hall  
Whittaker Avenue  
Richmond TW9 1TP  
020 8332 1141  
museumofrichmond.com



## ARTS AND CULTURE

### ONE PAVED COURT

This artist run space contains an architect designed gallery and a studio space under the same roof. One Paved Court offers an alternative programme of innovative and stimulating work, and the opportunity to engage directly with artists working in a range of media.

1 Paved Court  
Richmond TW9 1LZ  
020 8408 2139  
onepavedcourt.co.uk

### ORLEANS HOUSE GALLERY

Orleans House Gallery is a free public art gallery managed by Richmond Arts Service. The Gallery is home to the Richmond Borough Art Collection. There is a varied programme of both historic and contemporary exhibitions throughout the year, as well as the Study Gallery, which explores the history of the local area. There are also frequent workshops, talks and tours.

Orleans Road  
Twickenham TW1 3BL  
020 8831 6000  
orleanshousegallery.org

### RIVERSIDE GALLERY

Located within Richmond Old Town Hall, the gallery offers a diverse programme of exhibitions throughout the year. Local artists are usually featured and work is usually for sale.

Old Town Hall, Whittaker Avenue  
Richmond TW9 1TP  
020 8831 6000  
richmond.gov.uk





STRAWBERRY HILL HOUSE  
AND GARDEN



## ARTS AND CULTURE

### STRAWBERRY HILL HOUSE AND GARDEN

Strawberry Hill House was discovered and transformed into a little Gothic Castle by Horace Walpole (the youngest son of Britain's first Prime Minister) from 1747. It became a tourist attraction in Walpole's lifetime and a place where the English aristocracy, including royalty, were entertained. The popularity of the house became a contributing factor in the emergence of Gothic Revival architecture that grew throughout the Eighteenth and Nineteenth Centuries. One can only truly appreciate this Gothic masterpiece and charming garden with a visit.

268 Waldegrave Road  
Twickenham TW1 4ST  
020 8744 1241  
[strawberryhillhouse.org.uk](http://strawberryhillhouse.org.uk)

### TURNER'S HOUSE

This recently restored house was originally built by 1813 to the designs of England's great landscape painter, JMW Turner. Acting as his own architect, Turner designed the house as a quiet retreat away from the pressures of the London art world. The conservation of Turner's House enables visitors to explore this sanctuary and gain an insight into the private life of this incredible artist.

Sandycombe Lodge  
40 Sandycumbe Road  
Twickenham TW1 2LR  
020 8892 5485  
[turnershouse.org](http://turnershouse.org)

### YORK HOUSE GARDENS

York House Gardens is a tranquil, riverfront garden located behind York House. The Indian industrialist, Sir Ratan Tata, was responsible for the most significant remodelling of the gardens. He created a sunken lawn to the rear of the house and further glorified the gardens with the purchase of a magnificent group of marble figures – The Sea Nymphs (known as The Naked Ladies) which remain in place today.

Sion Road  
Twickenham TW1 3DD  
[richmond.gov.uk](http://richmond.gov.uk)





BINGHAM  
RIVERHOUSE



## RESTAURANTS

### BINGHAM RIVERHOUSE

Once upon a river, there was a house; a house where people met and mingled, where parties were planned, meetings were held and vows were exchanged. Here, there's a constant murmur of water, music and the clinking of glasses. Set at the gateway to Richmond, this house is Bingham Riverhouse - Steven Edwards' restaurant. At this restaurant you can enjoy simple and imaginative new British food from breakfast to brunch and lunch to dinner, whilst enjoying beautiful views. The Bingham Riverhouse can cater for all types of celebrations and events and is the perfect place to dine, drink and meet. Bingham Riverhouse also hosts a Members' Club.

61-63 Petersham Road  
Richmond TW10 6UT  
020 8940 0902  
[binghamriverhouse.com](http://binghamriverhouse.com)

### THE DYSART PETERSHAM

Overlooking Richmond's green spaces, The Dysart Petersham is a family run restaurant, boasting three AA rosettes. With a passion for food and wine, the team is committed to sustainably sourced, high-quality ingredients. In addition to enjoying the great food and a relaxing ambience, you can be entertained by some of the finest jazz and classical musicians at the monthly Sunday evening classical recitals. At The Dysart, tradition is held in the highest regard - and this means food, wine, music and a convivial atmosphere.

135 Petersham Road  
Richmond TW10 7AA  
020 8940 8005  
[thedysartpetersham.co.uk](http://thedysartpetersham.co.uk)



THE DYSART PETERSHAM

RICHMOND SQUARE  
RICHMOND UPON THAMES





THE IVY CAFÉ  
RICHMOND



## RESTAURANTS

### GAUCHO RICHMOND

Gacho believes that every guest should experience a little bit of Argentine life. This low-slung, boathouse-inspired building provides panoramic views of Richmond Bridge and Petersham Meadows, year-round. In the summer months, sit outside on the waterside terrace and enjoy a seafood barbecue or an authentic Argentinian steak from the alfresco kitchen – a sophisticated way to spend a day on the river.

The Towpath, Richmond Riverside  
Richmond TW10 6UJ

020 8948 4030  
gauchorestaurants.com

### THE GLASSHOUSE

The Glasshouse is owned by Nigel Platts-Martin and Bruce Poole, the team behind acclaimed London restaurants Chez Bruce and La Trompette. The Glasshouse gained a Michelin star in 2002 and has maintained an outstanding reputation for food, wine and customer care ever since.

Even though The Glasshouse has won awards over the years, the restaurant hasn't lost its feel of being a much-loved local restaurant. Pride is taken in giving guests a top class and memorable dining experience within a friendly, relaxed environment.

14 Station Parade  
Kew TW9 3PZ

020 8940 6777  
glasshouserestaurant.co.uk

### THE IVY CAFÉ RICHMOND

The Ivy Café, Richmond offers a sophisticated and relaxed dining experience. Open seven days a week, the restaurant features an all day café style menu offering breakfast, lunch, light snacks, afternoon tea, cocktails, weekend brunch and dinner. The restaurant also has a bar and a private dining room, ensuring there is something on offer for every occasion. The Isabella Room (private dining room) can seat up to 24 guests and is decorated beautifully with referenced artwork and prints inspired by the natural landscapes of Richmond Park and the Isabella Plantation.

9-11 Hill Street  
Richmond TW9 1SX

020 3146 7733  
theivycaferichmond.com





## RESTAURANTS

### 144 ON THE HILL

Richmond's new destination restaurant and cocktail bar offers a series of effortlessly connected spaces, carefully considered to become a place to kick back, brunch, lunch, celebrate or dine. The newly created restaurant offers a series of spaces all dedicated to a different experience. The snug offers an intimate space for cosy down time, while the bar and lounge offer a more upbeat vibe with live music. All dishes are prepared from scratch and feature a number of British classics and sharing plates inspired from menus that celebrate local produce and British heritage.

149-150 Richmond Hill  
Richmond TW10 6RW  
020 8940 2247  
144onthehill.co.uk

### NO.1A DUKE STREET

No. 1a Duke Street is an independent neighbourhood bar and restaurant with a contemporary interior providing the perfect backdrop for relaxed eating and drinking. Discover the all-day dining menus, with a focus on well sourced ingredients; from breakfast to dinner, social snacks to special occasions, all complemented by hand crafted beer, wine and cocktail lists to enjoy at any time of day. The elegant surroundings of No. 1a Duke Street offers a perfect space for socialising with friends whether in the morning sun, or as the evening draws in.

1a Duke Street  
Richmond TW9 1HP  
020 3841 6898  
no1adukestreet.co.uk

### PETERSHAM NURSERIES CAFÉ AND TEAHOUSE

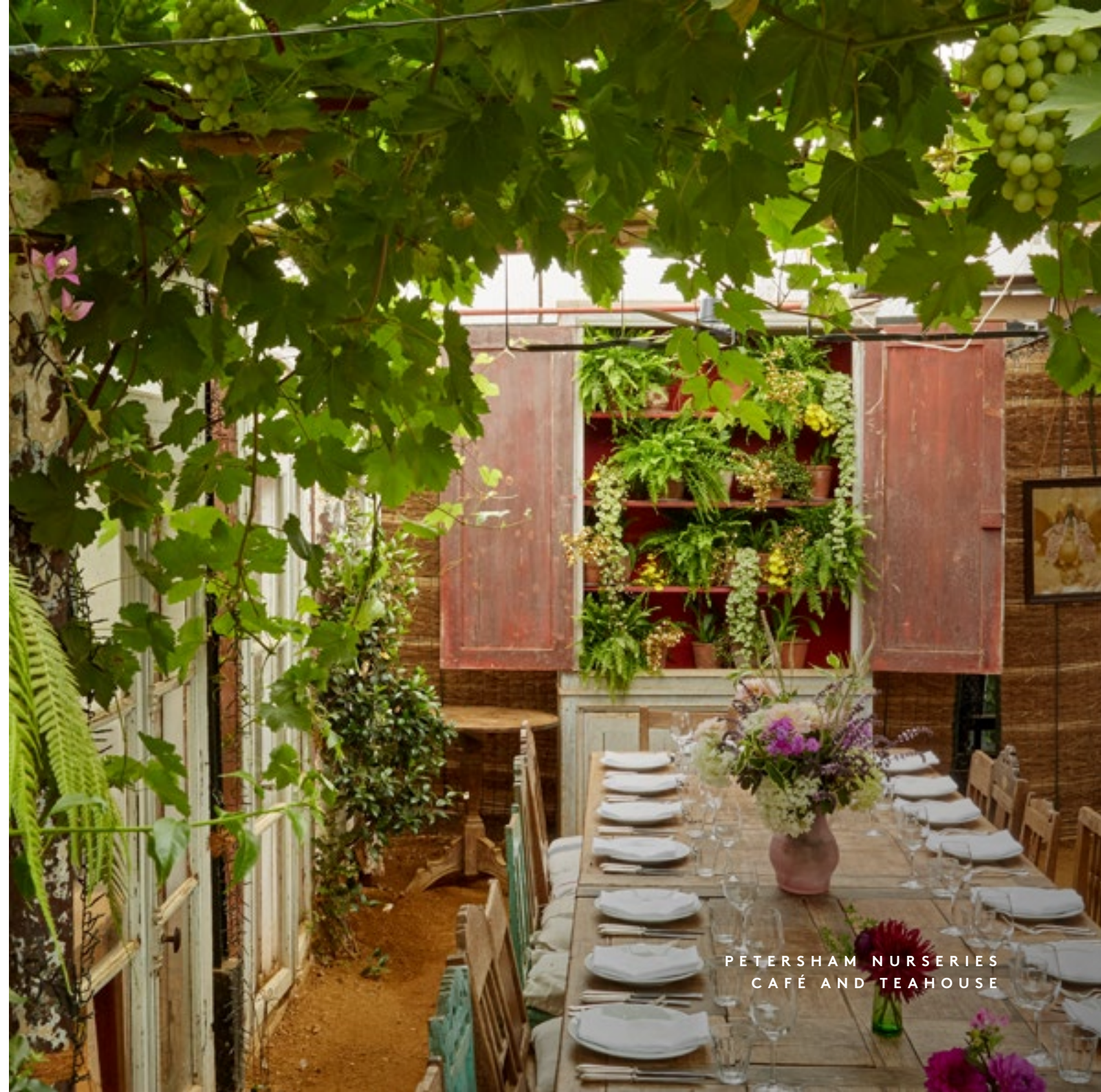
Absorb the magical atmosphere within one of the most picturesque spots in Richmond.

Petersham Nurseries Café is known for culinary excellence, ethical and sustainable sourcing, as well as drawing out beauty in the simplest of things. The Café, respecting the Slow Food philosophy, serves seasonal, Italian inspired food and is a charmingly casual, yet sophisticated restaurant, set within a glasshouse brimming with bougainvillea and fragrant jasmine, draped with Indian blinds and decorated with antique furniture, mirrors and paintings.

The Teahouse, inspired by the Petersham Nurseries kitchen garden and it's British and Italian heritage, offers wholesome seasonal food complimented with fresh salads. Alongside the savoury offering, are hearty homemade cakes, whole leaf teas and freshly ground coffee.

Church Lane, Off Petersham Road  
Richmond TW10 7AB  
020 8940 5230  
petershamnurseries.com

RICHMOND SQUARE  
RICHMOND UPON THAMES



PETERSHAM NURSERIES  
CAFÉ AND TEAHOUSE





## PUBS AND BARS

### THE LASS O' RICHMOND HILL

Just a stone's throw from the beautiful Richmond Park, The Lass O'Richmond Hill is the perfect place to relax and enjoy a warm, cosy atmosphere in winter and sunny, al fresco dining in the summer.

It's possible to book restaurant tables, private dining alcoves and beautiful areas reserved for special occasions. To host a party at The Lass, you need only get in touch and the chefs will help create the perfect menu for your celebration.

8 Queens Road TW10 6JJ

020 8940 1306

[lassorichmondhill.co.uk](http://lassorichmondhill.co.uk)

### OLD SHIP RICHMOND

The Old Ship is a pub that fills each of its guests with a warm, comforting feeling. Decorated as a traditional watering hole with dark mahogany tables and a smattering of maritime antiques, the pub boasts a stunning dinner and drinks menu. Whether you're tucking into a delicious roast or chomping your way through a succulent burger, the variety on offer will cater for even the pickiest of needs. Be sure to check out the beer garden and balcony, which boasts stunning views over Richmond Village.

3 King Street

Richmond TW9 1ND

020 8940 3461

[theoldshiprichmond.com](http://theoldshiprichmond.com)

### ONE KEW ROAD

Situated in the heart of Richmond, a stone's throw from the station, this iconic venue's claim to fame is that it was the site of the Rolling Stones' first ever gig!

One Kew Road is a stunning gastro pub and event space, perfect for escaping the hustle and bustle of central London. This quirky and versatile venue offers an exceptional menu of delicious mains, classic pub food, tempting starters, and scrumptious desserts, as well as wide selection of wines, real ales, and legendary cocktails.

1 Kew Road

Richmond TW9 2NQ

020 8940 5768

[onekewroadrichmond.co.uk](http://onekewroadrichmond.co.uk)





PUBS AND BARS



THE RISING SUN

THE RISING SUN

A stunning alfresco pub in the heart of Richmond, The Rising Sun is primed for evenings in the summer sunshine with British gastro dining, hearty wines and a superb range of beers. Plotted just shy of Marble Hill House, The Rising Sun not only makes a great venue to indulge in dinner and drinks while in town, it is the perfect pre drinking spot before heading down to Twickenham Rugby Stadium. Interiors at the venue are tasteful and modern, while their stunning beer garden charms each and every local thanks to its sunny plot and open space.

277-279 Richmond Road  
Twickenham TW1 2NP  
020 8892 6252  
therisingsunrichmond.co.uk

TAP TAVERN

Tap Tavern, located in the heart of Richmond upon Thames, is a newly opened, independent free house on a mission to bring the best and most exciting range of craft beers & ales to the South West beer scene. Think a 21st century Central Perk meets Cheers where beer and Gin replace hot coffee

A specially built 20 tap beer wall, host their daily, rotating selection of beers sourced from local and UK bases, independent microbrewers. Monthly specials feature some niche breweries from around the world, with varieties not found in your typical local. The impressive beer line up is supported by an extensive assortment of bottles and cans from all over the world – enough to pique the curiosity of even the most avid beer lover.

Princes Street  
Richmond TW9 1ED  
020 8940 2118  
taptavern.co.uk



PUBS AND BARS



THE WHITE HORSE

THE WHITE HORSE

A picturesque gastro pub in Richmond, the family friendly nature of The White Horse can be seen most clearly on Sunday where families turn out in force for the famous roast. With its minimal yet comfortable decor, you'll feel right at home as soon as you enter and can leave the bustle of the city behind. The bar is stocked with Fuller's finest beers and ales which are brewed just down the road and can be enjoyed in the garden refuge.

Worple Way  
Richmond TW10 6DF  
020 8940 2418  
whitehorserichmond.co.uk

THE WHITE CROSS

The World Famous White Cross is a traditional pub on the Richmond riverfront. The menu serves high quality, freshly made food with the best British seasonal ingredients. A part of life on the River Thames, it is situated in an exceptionally beautiful part of the Thames. Whether you're relaxing inside on a cold winter's day or soaking up the sun in the garden, this is one of the best places along the river to enjoy the wonderful view.

This is also one of the only remaining pubs where the high tide comes to you. Several days a month, the tidal River Thames rises high enough to encroach on the pub garden. Just enjoy the feeling of being safe and dry, marooned by nature with a pint of beer or a glass of wine in hand.

Riverside (Off Water Lane)  
Richmond TW9 1TH  
020 8940 6844  
thewhitecrossrichmond.com





BINGHAM RIVERHOUSE



## HOTELS

### BINGHAM RIVERHOUSE ★★★

This characterful boutique hotel overlooking the river Thames provides a blissful home from home stay. The library style interior and the glorious garden makes it a comfortable place to relax and meet with friends.

61-63 Petersham Road  
Richmond TW10 6UT  
020 8940 0902  
[binghamriverhouse.com](http://binghamriverhouse.com)

### HARBOUR HOTEL AND SPA RICHMOND ★★★★★

A luxury boutique retreat just feet away from Richmond Park. Escape the hustle and bustle of everyday London life and unwind in the HarSPA where high quality treatments help you feel relaxed, revived and rejuvenated. This newly renovated Eighteenth Century property has been transformed and, with vibrant décor throughout, it's a charming getaway.

Richmond Hill  
Richmond TW10 6RP  
020 8940 0061  
[harbourhotels.co.uk/richmond](http://harbourhotels.co.uk/richmond)



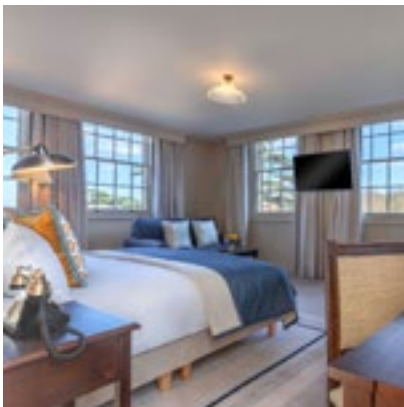
HARBOUR HOTEL AND SPA

RICHMOND SQUARE  
RICHMOND UPON THAMES





HOTELS



RICHMOND HILL HOTEL

**THE PETERSHAM  
RICHMOND**

★★★★

Victorian splendour combines with first class hospitality at The Petersham. With stunning floor to ceiling views overlooking the River Thames from their award winning restaurant, and views of surrounding Petersham Meadows from elegant hotel rooms, it provides a magical setting for unforgettable events and weddings.

Nightingale Lane  
Richmond TW10 6UZ  
020 8940 7471  
petershamhotel.co.uk

**RICHMOND HILL HOTEL  
★★★★**

Modern elegance meets Georgian style at this idyllic hotel on top of Richmond Hill. With a beautiful, serene panorama and tranquil atmosphere, this is the perfect place to relax and 'switch off.'

The hotel's interiors draw upon the heritage and history of the original townhouses and have large function rooms boasting with natural light – a perfect location for conferences, receptions and meetings.

144 -150 Richmond Hill  
Richmond TW10 6RW  
020 8940 2247  
richmondhill-hotel.co.uk

RICHMOND SQUARE  
RICHMOND UPON THAMES







## SPORTING PURSUITS

### ROYAL ASCOT

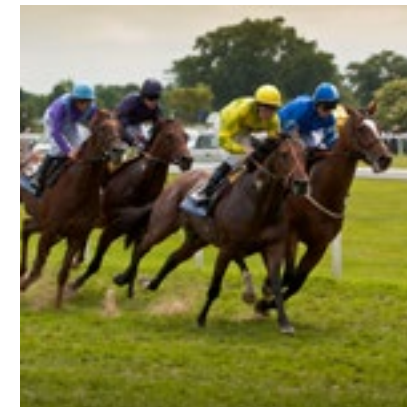
Ascot Racecourse is one of Britain's most prestigious racecourse, hosting Royal Ascot, the world-renowned race meeting which attracts racing's finest horses who compete for millions of pounds' worth of prize money. Royal Ascot is also synonymous with sartorial elegance, known for its exquisite fashion and magnificent millinery. An abundance of wining and dining options make Royal Ascot the perfect occasion for socialising. The meeting is held over five days, each with its own distinct character – but all with a glorious atmosphere and a sense of occasion. This is an unmissable event on the social calendar.

High Street  
Ascot SL5 7JX  
0344 346 3000  
ascot.co.uk

### HAM POLO CLUB

Ham Polo Club is Greater London's last remaining polo club. Founded in 1926, Ham has an established, distinguished reputation built up over 90 years. This is a place where you can watch polo and then dance the night away at the Friday night events, hosted by DJ's and featuring live bands. For a peaceful Sunday afternoon's entertainment, sit on the sidelines, watch the game and enjoy a picnic. With excellent playing and social facilities and a relaxed family atmosphere, Ham Polo Club is a popular place for polo fans. Fixtures run between May and September.

Petersham Road  
Richmond TW10 7AH  
020 8334 0000  
hampolocub.com



ROYAL ASCOT

RICHMOND SQUARE  
RICHMOND UPON THAMES





## SPORTING PURSUITS

### TWICKENHAM STADIUM

Twickenham Stadium, the home of England Rugby, is the world's largest dedicated rugby union venue, seating up to 82,000 people. It's a destination where fans from around the world can experience action on the pitch, host a fantastic event, see some of the world's biggest music stars in action and relive history with a stadium tour or a visit to the newly-housed World Rugby Museum. Make sure to finish the day off with a souvenir from the Rugby Store.

200 Whitton Road  
Twickenham TW2 7BA

Twickenham Stadium  
020 3613 2036  
twickenhamstadium.com

Rugby Museum and Stadium Tours  
020 8892 8877  
worldrugbymuseum.com

### TWICKENHAM STOOP

This sports stadium is the home to Harlequins Rugby Union team and is just across the road from Twickenham Stadium. Watching top level rugby and supporting a local team makes for a great day out in Twickenham.

Langhorn Drive  
Twickenham TW2 7SX  
020 8410 6000  
quins.co.uk

### WIMBLEDON

The perfect way to spend a summer's day is taking in the action at the internationally-famous Wimbledon Tennis Championships held at the All England Lawn Tennis and Croquet Club. More than half-a-million people attend the annual two-week event to watch some world-class tennis. It's possible to go behind the scenes, visit the Wimbledon Lawn Tennis Museum and tour the grounds.

The All England Lawn Tennis Club  
Church Road  
Wimbledon SW19 5AE

General 020 8944 1066  
Ticketing enquiries 020 8971 2473  
wimbledon.com

RICHMOND SQUARE  
RICHMOND UPON THAMES







HAMPTON COURT  
PALACE GARDEN  
FESTIVAL



ANNUAL HIGHLIGHTS

THE BIG GAME  
TWICKENHAM STADIUM

The Big Game is an annual rugby union match hosted by Harlequins during the Christmas holiday season each year. Expect fireworks and plenty of razzle dazzle rugby at London’s biggest rugby party. Bring family and friends to enjoy a great fun Christmas festival.

200 Whitton Road  
Twickenham TW2 7BA  
[twickenhamstadium.com](http://twickenhamstadium.com)

THE GREAT RIVER RACE

The Great River Race is London’s River Marathon. Held once a year, usually in September, this spectacular boat race up the River Thames attracts over 330 crews from all over the globe. The Great River Race appeals to every level of competitor.

From dedicated athletes, to those who enjoy fancy dress and charity stunts. With the race going through Richmond and finishing at Ham House, the Great River race is a fun day out for both competitors and spectators.

The Great River Race Head Office  
Office 4, Elm House  
Willowbank, Claygate Lane,  
Thames Ditton KT7 0LE  
020 8398 8141  
[greatriverrace.co.uk](http://greatriverrace.co.uk)

HAMPTON COURT  
PALACE GARDEN  
FESTIVAL

The RHS Hampton Court Palace Garden Festival is held in the grounds of Hampton Court Palace and is usually on for a few days in July. It is the world’s largest annual flower show, covering 34 acres and flanking both sides of the Long Water at Hampton Court Palace. On addition to countless show gardens by top landscape designers, there’s a Rose Marquee, a Floral Marquee, plant pavilions, talks and demonstrations. This is a wonderful summer’s day out, packed with gardening inspiration, stunning floral displays and workshops in a majestic setting.

East Molesey KT8 9AU  
0344 338 7501  
[rhs.org.uk](http://rhs.org.uk)





ANNUAL HIGHLIGHTS

KEW THE MUSIC FESTIVAL

A week long festival of summer picnic concerts in Kew Gardens appealing to all generations of music lovers, Kew the Music is the ideal summer evening outing where families can enjoy some great music in beautiful surroundings.

Royal Botanical Gardens  
Kew, Richmond TW9 3AB

kewthemusic.org

ROYAL ASCOT

Hosted by Ascot Racecourse, Royal Ascot is an annual Flat racing meeting held for five days in mid June which hosts 18 Group races (the highest quality Flat races).

The Gold Cup is Royal Ascot's oldest and most prestigious race and occurs on the third day of the meeting each year (Thursday). This is the day colloquially known as Ladies day.

Ascot Racecourse  
High Street  
Ascot SL5 7JX

0344 346 3000  
ascot.co.uk

THE CHAMPIONSHIPS WIMBLEDON

The Championships, Wimbledon, or just Wimbledon as it is more commonly referred to, is the oldest tennis tournament in the world and is widely regarded as the most prestigious. Since the first tournament 125 years ago in 1877, The Championships have been hosted by the All England Lawn Tennis and Croquet Club and take place over two weeks in late June – early July.

It is one of the four annual Grand Slam tennis events along with the Australian, French, and US Opens and is the only one still played on natural grass.

The All England Lawn Tennis Club  
Church Road  
Wimbledon SW19 5AE

Ticketing enquiries 020 8971 2473  
wimbledon.com



THE CHAMPIONSHIPS  
WIMBLEDON





## RETAIL THERAPY

### ANNA BOUTIQUE

A wide variety of premium womenswear brands, handpicked by Anna. Anna Boutique is a refreshing fusion of London style with an Italian twist.

44 Hill Rise  
Richmond TW10 6UB  
020 8948 0199  
annaboutique.com

### ANTHROPOLOGIE

American owned, Anthropologie UK is a destination for the creative, worldly woman. Their mission has always been to surprise and delight you with unexpected, distinctive finds for your wardrobe and home. They source and craft all of their products with care, offering an expansive, carefully curated collection of clothing, accessories, homeware, and unique furniture.

70 - 72 George Street  
Richmond TW9 1HE  
020 8948 8697

### BIMBA Y LOLA

Spanish brand Bimba y Lola, is creative, diverse and young! Founded by two sisters and named after their dogs, it is a fashion house strong in accessories, bags and shoes, with bold colours and edgy prints.

7 Hill Road  
Richmond TW9 1SX  
020 8332 2177  
bimbaylola.com

### CURATED MAN CURATED WOMAN

Sitting side by side, carefully curated menswear and womenswear.

10-12 Hill Street  
Richmond TW9 1TN  
020 8948 1383  
curatedgoodsltd.co.uk

### FEATHER AND STITCH

Beautiful designer women's clothing handpicked from mainly Danish, French and other Scandinavian brands.

16 King Street  
Richmond TW9 1ND  
020 8332 2717  
featherandstitch.com

### GANT

An American Swedish classic clothing and accessories brand.

24 George Street  
Richmond TW9 1HY  
020 8439 9390  
gant.co.uk

### HEROES OF RICHMOND

An exclusive independent menswear shop.

9 Golden Court  
Richmond TW9 1EU  
020 8940 9490  
heroesofrichmond.com





## RETAIL THERAPY

### JIGSAW

Luxury British fashion clothing and accessories brand. The company is based locally in Kew.

41 George Street  
Richmond TW9 1HJ  
020 8940 8386  
jigsaw-online.com

### LK BENNETT

British affordable luxury brand offering stylish women's fashion and clothing.

3 Hill Road  
Richmond TW9 1SX  
020 3985 3080  
lkbennett.com

### L'OCCITANE EN PROVENCE

L'Occitane en Provence offers body, face, fragrances and home products. Based in Manosque, France, L'Occitane celebrates and preserves the traditions of Provence.

15 George Street  
Richmond TW9 1JL

020 8332 9303  
uk.loccitane.com

### LULULEMON ATHLETICA

Canadian based, Yoga focused apparel featuring stylish athletic wear and accessories.

The Quadrant, 3-4 Dome Building  
Richmond TW9 1DT

020 8948 5151  
lululemon.co.uk

### MARGARET HOWELL

Contemporary and exclusive, British clothing designer.

7-8 Duke Street  
Richmond TW9 1HP  
020 8948 5005  
margarethowell.co.uk

### OLIVER BONAS

An independent British lifestyle store, designing their own Take on fashion and homeware.

4 The Quadrant  
Richmond TW9 1BP  
020 8940 9124  
oliverbonas.com

### REISS

Reiss is a modern, British fashion brand owned and run by the founder, David Reiss, offering stylish womenswear and menswear.

71 George Street  
Richmond TW9 1HE  
020 8940 3533  
reiss.com

RICHMOND SQUARE  
RICHMOND UPON THAMES



## RETAIL THERAPY

### RUSSELL AND BROMLEY

Luxury British footwear and handbag retailer founded in 1873.

3A, 35-38 George Street  
Richmond TW9 1HY  
020 8948 7345  
russellandbromley.co.uk

### SPACE NK

A luxury beauty retailer.

34 Hill Street  
Richmond TW9 1TW  
020 8940 4332  
spacenk.com

### SWEATY BETTY

Sweaty Betty is a British retailer specialising in women's activewear.

2 The Quadrant,  
Richmond TW9 1BP  
020 8948 2355  
sweatybetty.com

### WHISTLES

Contemporary women's fashion, accessories and shoes.

19 Hill Street  
Richmond TW9 1SX  
020 8332 1646  
whistles.com

### ZADIG AND VOLTAIRE

French based fashion label with chic, edgy clothing and accessories for men and women.

22 Hill Street  
Richmond TW9 1TW  
020 8332 3004  
zadig-et-voltaire.com/eu/uk



RICHMOND SQUARE  
RICHMOND UPON THAMES





## SWEET TREATS

### AMORINO

This boutique in Richmond serves ice cream, sweet treats and a variety of drinks. One can choose as many flavours as they like to make the famous gelato flower – a unique combination of beautiful and delicious!

5 The Quadrant  
Richmond TW9 1BP  
020 8948 2666  
[amorino.com/en](http://amorino.com/en)

### DANIELI ON THE GREEN

As well as producing serving gorgeous ice cream, Gelateria Danieli also offers a beautiful selection of chocolates in its shop on Richmond Green. With a variety of chocolates, ribbons and boxes, Danieli Chocolates can create the perfect gift for any occasion.

13 The Green  
Richmond TW9 1PX  
020 8439 9111  
[danielichocolates.com](http://danielichocolates.com)

### VENCHI CHOCOLATE AND GELATO

A stylish and welcoming chocolate and gelato boutique offering a broad range of quality treats to buy as presents or to linger on any time of the day while walking around the high street.

25-26 George Street  
Richmond TW9 1HY  
020 3638 0922  
[uk.venchi.com](http://uk.venchi.com)





## MARKETS AND WINE MERCHANTS



THE GOOD WINE SHOP

### RICHMOND DUCK POND MARKETS

In the centre of Richmond, tucked between Hill Street, Bridge Street and the riverside is elegant Heron Square, home to Richmond Duck Pond Markets every weekend.

### FOODIES MARKET SATURDAY

A vibrant marketplace for independent food producers and small businesses. A great place for customers to form relationships with the suppliers and producers of their weekly shop.

### ARTISAN FOOD AND CRAFT MARKET SUNDAY

The best local artists, crafters, food producers and ethical businesses are here every week. There are locally made arts and crafts, gifts, home wares and clothing, with a tempting choice of locally made food both to eat there and take home.

Heron Square  
Richmond TW9 1EP  
[duckpondmarket.com](http://duckpondmarket.com)

### WHOLE FOODS MARKET

This eco minded chain sells the best natural and organic grocery items, housewares and other products. Whatever you're into, Whole Foods Market is the place to find the tastiest and best version of it!

1-3 George Street  
Richmond TW9 1AB  
020 8334 4130  
[wholefoodsmarket.co.uk/stores/richmond](http://wholefoodsmarket.co.uk/stores/richmond)

### THE GOOD WINE SHOP

An independent wine merchant in Richmond Hill priding itself on its customer service delivered by a passionate and knowledgeable team of wine experts and enthusiasts. Voted Best London Neighbourhood Wine Shop in 2020, over 120 different grape varieties are on offer and several ticketed tastings available throughout the year.

56 Friars Stile Rd  
Richmond TW10 6NQ  
020 3489 5610  
[thegoodwineshop.co.uk](http://thegoodwineshop.co.uk)

RICHMOND SQUARE  
RICHMOND UPON THAMES







## FLORISTS

### AMANDA'S FLOWERS

This established florist provides amazing flowers for any occasion. From traditional to contemporary styles, whether an eye catching bouquet, a buttonhole or a garland, Amanda's Flowers tailor-makes your flowers to suit your specific requirements.

George Street  
Richmond TW9 1HY  
020 8948 4060  
amandasflowers.co.uk

### BRAMBLE AND MOSS

A quaint flower shop that places a high importance on using flowers in season and seeks out more unusual ingredients for their bouquets. From a one of a kind arrangement to large events, you can be sure that Bramble and Moss will provide a personal touch.

64 Hill Rise  
Richmond TW10 6UB  
020 8332 2268  
brambleandmoss.co.uk

### ZITA ELZE

Run by an award winning floral artist and designer, Zita Elze makes beautiful bespoke bouquets for any occasion. Specialising in weddings, the immaculate designs are perfectly scripted to translate your dreams into a reality that you hadn't quite fully imagined.

287 Sandycombe Road  
Kew TW9 3LU  
020 8940 0040  
zitaelze.com

RICHMOND SQUARE  
RICHMOND UPON THAMES







## BEAUTY AND FITNESS

### BOOTCAMP PILATES

Pilates is one of the best, fastest and safest ways to transform ones posture, strength and shape. The classes are highly energetic, invigorating, inventive and enjoyable. Bootcamp Pilates is a great way to lose weight and gain a more aligned, toned body within a fun welcoming atmosphere.

4 Red Lion Street  
Richmond TW9 1RW  
0330 010 0210  
bootcamppilates.com

### BHUTI

Bhuti is an eco wellbeing escape, offering carefully curated treatments, classes, and things for the mind, body and soul to flourish. Bhuti offers a range of yoga styles, pilates, barre and HIIT classes, as well as organic treatments and therapies. Alternatively, one can unwind and restore on an indulgent bhuti escape day where you can enjoy as many classes as you fancy, chill in the members' space and graze in their vegan cafe.

50 Hill Rise  
Richmond TW10 6UB  
0330 400 3108  
bhuti.co

### DIGME FITNESS

Digme offers a diverse range of authentic group exercise classes in an inclusive, community focused environment. Whether you want to get lost in the music and ride to the rhythm, track your fitness using data or experience an exhilarating HIIT class, there is something for you. Fun, accessible fitness for everyone from first timer to fanatic.

23 Sheen Road  
Richmond TW9 1BN  
020 4524 4882  
digmefitness.com

53





BEAUTY AND FITNESS

54



KALLIMA CLUB SPA

HARSPA AND GYM

HarSPA combines holistic therapies with modern day techniques to create unique treatments of the highest quality. The spa uses only the purest natural ingredients, inspired by naturally sourced marine elements and botanicals, so you'll leave feeling revived, relaxed and rejuvenated. There are a wide range of treatments to choose from, including some especially designed for men and treatments for pregnancy. There are also a variety of gym classes.

Richmond Harbour Hotel and Spa  
Richmond Hill  
Richmond TW10 6RP  
020 8940 0061  
[harbourhotels.co.uk/richmond/spa-and-gym](http://harbourhotels.co.uk/richmond/spa-and-gym)

KALLIMA CLUB SPA

Experience total relaxation and rejuvenation for the mind, body and soul with a range of treatments, membership options and personalised fitness for a balanced wellness lifestyle. Choose from an exclusive selection of innovative beauty and relaxation treatments, designed to deliver comfort, luxury and outstanding results. These include signature therapies, nourishing facials, body massages and more.

Hilton London Syon Park  
Syon Park TW8 8JF  
020 7870 7777  
[londonsyonpark.com/kallima-spa](http://londonsyonpark.com/kallima-spa)



BEAUTY AND FITNESS

55



VIRGIN ACTIVE

VIRGIN ACTIVE  
FITNESS CENTRE

Based in the South Stand of the world famous Twickenham stadium and kitted out with facilities fit for an international superstar. Dive into the pool, scale the indoor climbing wall, and make the most of a suite of specialist studios surrounding one of the most top spec gym floors in the country.

South Stand  
Twickenham Rugby Stadium  
196 Whitton Road  
Twickenham TW2 7BA  
020 8124 4137  
[virginactive.co.uk](http://virginactive.co.uk)

YOGA HAVEN  
RICHMOND

Yoga Haven sets out to change the way one looks at health, fitness and meditation. The studio offers a wide variety of yoga classes, with something for everyone, regardless of your level of experience, flexibility, or strength. With adaptations to suit your ability and fitness levels, you'll always feel safe and comfortable on the mat in these yoga classes.

26 Kew Road  
Richmond TW9 2NA  
020 8948 2080  
[yogahaven.co.uk](http://yogahaven.co.uk)





## EDUCATION

### STATE PRIMARY SCHOOLS

#### HOLY TRINITY CE PRIMARY AND NURSERY SCHOOL

A co educational Church of England  
school for ages 3-11.

OFSTED OUTSTANDING 2015

Carrington Road  
Richmond TW10 5AA

020 8940 2730  
[holytrinityschool.org.uk](http://holytrinityschool.org.uk)

#### MARSHGATE PRIMARY SCHOOL

A co educational local authority  
school for ages 4-11.

OFSTED OUTSTANDING 2015

157 Queens Road  
Richmond TW10 6HY

020 8332 6219  
[marshgate.richmond.sch.uk](http://marshgate.richmond.sch.uk)

#### ST ELIZABETH'S CATHOLIC PRIMARY SCHOOL

A co educational Roman Catholic  
voluntary aided school for ages 4-11.

OFSTED OUTSTANDING 2009

157 Queens Road  
Richmond TW10 6HY

020 8940 3015  
[st-elizabeths.richmond.sch.uk](http://st-elizabeths.richmond.sch.uk)

#### THE VINEYARD SCHOOL

A co educational community school  
for ages 4-11.

OFSTED OUTSTANDING 2013

Friars Stile Road  
Richmond TW10 6NE

020 8948 0195  
[vineyard.richmond.sch.uk](http://vineyard.richmond.sch.uk)





## EDUCATION

### STATE SECONDARY SCHOOLS

#### GREY COURT SCHOOL

A co-educational academy for ages 11-18.

OFSTED OUTSTANDING 2018

Ham Street, Ham

Richmond TW10 7HN

020 8948 1173

[greycourt.richmond.sch.uk](http://greycourt.richmond.sch.uk)

#### ST RICHARD'S REYNOLDS CATHOLIC HIGH SCHOOL AND SIXTH FORM

A co-educational Roman Catholic voluntary aided school for ages 11-18.

The college is a federation of St Richard Reynolds Catholic Primary School and St Richard Reynolds Catholic High School, which includes a sixth form.

OFSTED OUTSTANDING 2018

Clifden Road

Twickenham TW1 4LT

020 8325 4630

[strichardreynolds.org.uk](http://strichardreynolds.org.uk)

#### THE TIFFIN GIRLS' SCHOOL

A girls' selective academy and sixth form for ages 11-18.

OFSTED OUTSTANDING 2009

Richmond Road

Kingston KT2 5PL

020 8546 0773

[tiffingirls.org](http://tiffingirls.org)

#### THE TIFFIN SCHOOL

A selective academy for boys aged 11-18 and a co-educational sixth form for ages 16-18.

OFSTED OUTSTANDING 2011

Queen Elizabeth Road

Kingston KT2 6RL

020 8546 4638

[tiffinschool.co.uk](http://tiffinschool.co.uk)

#### WALDEGRAVE

A girls academy for ages 11-18 with a co-educational sixth form for ages 16-19.

OFSTED OUTSTANDING 2018

Fifth Cross Road

Twickenham TW2 5LH

020 8894 3244

[waldegrave.richmond.sch.uk](http://waldegrave.richmond.sch.uk)







EDUCATION  
PRIVATE SCHOOLS



FALCONS PREP  
SCHOOL

An independent school for boys  
aged 7-13.

41 Kew Foot Road  
Richmond TW9 2SS  
020 8948 9490  
falconsprep.co.uk

BROOMFIELD HOUSE  
SCHOOL

A co-educational independent day  
preparatory school for ages 3-11.

10 Broomfield Road  
Kew TW9 3HS  
020 8940 3884  
broomfieldhouse.com

HAMPTON PRE PREP  
AND PREP SCHOOL

A co-educational independent day  
school for ages 3-7 and a boys  
independent day school for ages 7-11.

Gloucester Road  
Hampton TW12 2UQ  
020 8979 1844  
hamptonprep.org.uk

HAMPTON SCHOOL

A boys independent day school for  
ages 11-18.

Hanworth Road  
Hampton TW12 3HD  
020 8979 5526  
hamptonschool.org.uk



EDUCATION  
PRIVATE SCHOOLS

HAMPTON COURT  
HOUSE SCHOOL

A co-educational independent day  
school for ages 3-18.

Hampton Court Road  
East Molesey KT8 9BS  
020 8614 0865  
hamptoncourthouse.co.uk

THE HARRODIAN  
SCHOOL

A co-educational independent day  
school for ages 4-18.

Lonsdale Road  
London SW13 9QN  
020 8748 6117  
harrodian.com

KING'S HOUSE SCHOOL

A boys independent preparatory day  
school for ages 3-13 with a nursery  
for boys and girls aged 3 and rising 3.

NURSERY  
Princes Road  
Richmond TW10 6DQ  
JUNIOR SCHOOL  
61 King's Road  
Richmond TW10 6EG

SENIOR SCHOOL  
68 King's Road  
Richmond TW10 6ES

020 8940 1878  
kingshouseschool.org

KEW GREEN  
PREPARATORY SCHOOL

A co-educational preparatory day  
school for ages 3-11.

Layton House  
Ferry Lane  
Kew Green TW9 3AF  
020 8948 5999  
kgps.co.uk

KEW COLLEGE

A co-educational preparatory school  
for ages 3-11.

24-26 Cumberland Road  
Kew TW9 3HQ  
020 8940 2039  
kewcollege.com





## EDUCATION

### PRIVATE SCHOOLS

#### LADY ELEANOR HOLLES JUNIOR SCHOOL

An independent day school for girls  
aged 7-11 years old.

Burlington House  
177 Uxbridge Road  
Hampton Hill TW12 1BD

020 8979 2173  
[lehs.org.uk](http://lehs.org.uk)

#### LADY ELEANOR HOLLES SENIOR SCHOOL AND SIXTH FORM

A girls' independent day school with  
boarding facilities and sixth form for  
ages 11-18.

Hanworth Road  
Hampton TW12 3HF

020 8979 1601  
[lehs.org.uk](http://lehs.org.uk)

#### OLD VICARAGE SCHOOL

A girls independent day preparatory  
school for ages 3-11.

48 Richmond Hill  
Richmond TW10 6QX

020 8940 0922  
[oldvicarageschool.com](http://oldvicarageschool.com)

#### RADNOR HOUSE

A co-educational independent day  
school and sixth form for ages 9-18.

Pope's Villa, Cross Deep  
Twickenham TW1 4QG

020 8891 6264  
[radnor-twickenham.org](http://radnor-twickenham.org)

#### ST CATHERINE'S SCHOOL TWICKENHAM

An independent Catholic school and  
sixth form for girls aged 3-18.

Cross Deep  
Twickenham TW1 4QJ

020 8891 2898  
[stcatherineschool.co.uk](http://stcatherineschool.co.uk)

#### ST PAUL'S SCHOOL

St Paul's is an independent school  
offering an outstanding, all round  
education for gifted boys aged 7-18.

Lonsdale Road  
London SW13 9JT

#### ST PAUL'S JUNIORS

020 8748 3461

#### ST PAUL'S

020 8748 9162  
[stpaulsschool.org.uk](http://stpaulsschool.org.uk)







TRANSPORT CONNECTIONS



64

CYCLING IN RICHMOND PARK

**UNDERGROUND, OVERGROUND AND NATIONAL RAIL**

Richmond Square is located just 650 metres walk from Richmond station. Choose from Underground services on the District Line, Overground services and National Rail services with a journey into London Waterloo just 18 minutes and Canary Wharf in half an hour.

**ROAD**

The A3 and M4 run on either side of the borough

**AIR**

London Heathrow Airport is just 7.4 miles away for international travel.

**CYCLE**

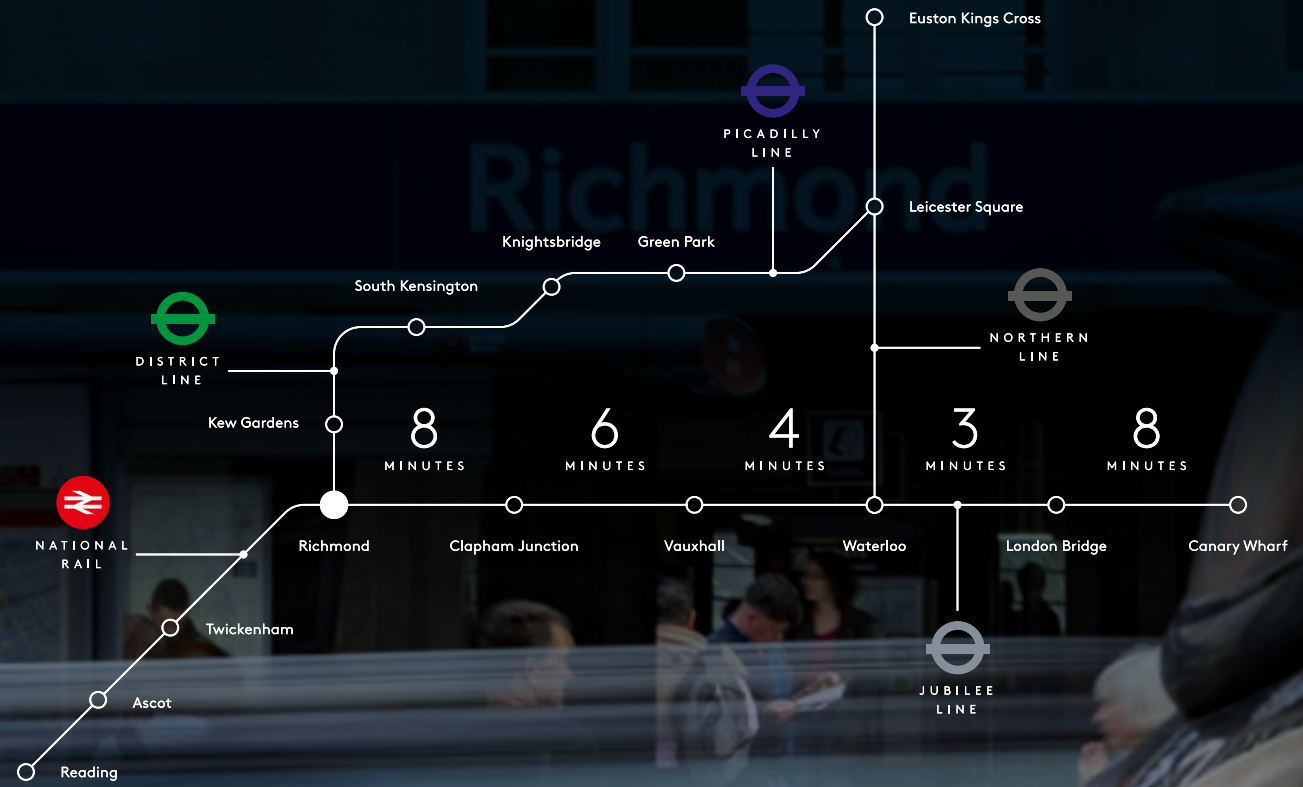
Offset carbon emissions and cycle the routes following the River Thames or through Richmond Park and on into central London.

RICHMOND SQUARE  
RICHMOND UPON THAMES

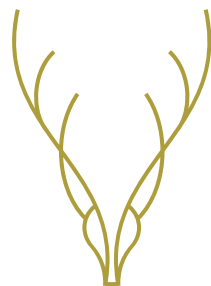
26  
MINUTES  
RICHMOND STATION  
TO KNIGHTSBRIDGE

29  
MINUTES  
RICHMOND STATION  
TO CANARY WHARF

18  
MINUTES  
RICHMOND STATION  
TO LONDON WATERLOO







---

## RICHMOND SQUARE

KEW FOOT ROAD  
RICHMOND UPON THAMES  
TW9 2TE

ALL ENQUIRIES

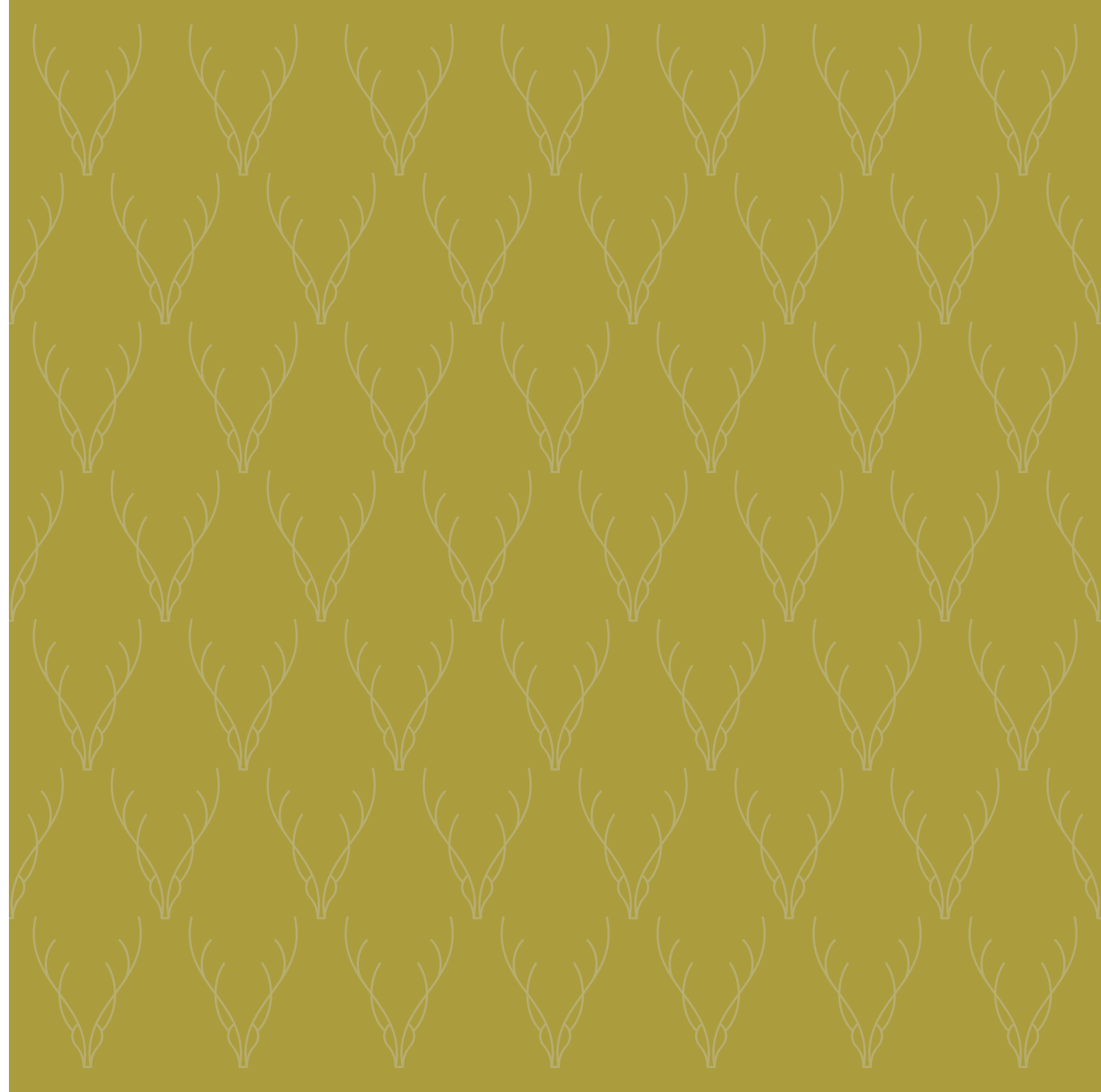
**0203 369 0169**

[richmondsq.co.uk](http://richmondsq.co.uk)

An exclusive development  
by RER London and Blue Coast Capital

Guide designed and produced by Craven Group [craven-property.com](http://craven-property.com)

RICHMOND SQUARE  
RICHMOND UPON THAMES







[richmondsq.co.uk](http://richmondsq.co.uk)