



Mulberry, 8 Hazelwood Court, Lindale Road
£375,000



Mulberry, 8 Hazelwood Court

Lindale Road, Grange-Over-Sands

Occupying an elevated position amidst four acres of private grounds Hazelwood Court, c.1897 is one of the areas most imposing buildings commanding outstanding panoramic views across Grange-over-Sands golf course towards Morecambe Bay. The Victorian property houses eleven luxury apartments which offer low maintenance permanent residences, second homes or holiday let investments.

Situated on the outskirts of the Lake District National Park within walking distance of Grange-over-Sands where the many amenities include restaurants, bars, shops, convenience stores, a post office, library, The Promenade and a railway station. Hazelwood Court offers access to great walks within the woods and surrounding countryside and it is within easy reach of the picturesque village of Cartmel, the market town of Kendal, The Lake District National Park and the M6.

The beautifully presented accommodation offers open plan kitchen, dining and living space, three double bedrooms, with two having en suite shower rooms, a four piece bathroom and ample storage plus a pool table. The apartment benefits from sliding sash windows and gas central heating and is offered for sale with no upper chain.

Outside offers communal gardens, allocated parking for two vehicles and visitor parking.

- Luxury apartment with stunning bay views
- No upper chain
- 2 allocated parking spaces
- First floor apartment with lift access
- Open plan kitchen, dining and living space
- No occupancy restrictions
- Well maintained communal gardens
- Bathroom and two en suites
- Light and contemporary, with pool table
- Woodland walks next to the apartment

DIRECTIONS

From Windermere head south on the A592 Newby Bridge Road. At the roundabout take the first left on to the A590 in the direction of Kendal. At the next roundabout turn right on to the B5277 signposted Grange and continue to the mini roundabout in Lindale. Take the first left towards Grange and continue for approximately 1 mile and the driveway for Hazelwood Court is located on the right just after the sign for Grange Golf Club on the left.

WHAT3WORDS: holiday.rebounded.sport

Council Tax band: TBD

Tenure: Leasehold

EPC Energy Efficiency Rating: D

EPC Environmental Impact Rating: D

IDENTIFICATION CHECKS Should a purchaser(s) have an offer accepted on a property marketed by THW Estate Agents they will need to undertake an identification check. This is done to meet our obligation under Anti Money Laundering Regulations (AML) and is a legal requirement. We use a specialist third party service to verify your identity. The cost of these checks is £43.20 inc. VAT per buyer, which is paid in advance, when an offer is agreed and prior to a sales memorandum being issued. This charge is non-refundable.





ENTRANCE

6' 0" x 5' 10" (1.83m x 1.78m)

Painted entrance door, single glazed sliding sash window, radiator, built in cupboard, coving.

ENTRANCE HALL

22' 9" x 12' 11" (6.94m x 3.94m)

Three single glazed sliding sash windows, two radiators, built in storage cupboard housing plumbing for washing machine, built in cupboard housing gas combination boiler, overhead storage, recessed spotlights, coving.

KITCHEN, DINING AND LIVING SPACE

29' 0" x 22' 1" (8.84m x 6.74m)

Seven single glazed sliding sash windows, three radiators, excellent range of base and wall units, sink, built in oven and combination microwave, induction hob with glass splashback and extractor/filter over, integrated fridge, freezer, dishwasher and wine cooler, breakfast bar with feature pendant lighting, recessed spotlights, coving.

BEDROOM

16' 2" x 12' 6" (4.92m x 3.81m)

Two single glazed sliding sash windows, two radiators, coving.

EN SUITE

8' 4" x 3' 10" (2.55m x 1.17m)

. Heated towel radiator, three piece suite in white comprises W.C., wash hand basin to vanity and fully tiled shower cubicle with thermostatic shower fitment, recessed spotlights, extractor fan, fitted mirror, tiling to walls and floor.

BEDROOM

15' 3" x 7' 8" (4.66m x 2.34m)

Two single glazed sliding sash windows, two radiators, coving.

EN SUITE

8' 4" x 3' 10" (2.55m x 1.17m)

Heated towel radiator, three piece suite in white comprises W.C., wash hand basin to vanity and fully tiled shower cubicle with thermostatic shower fitment, recessed spotlights, extractor fan, fitted mirror, tiling to walls and floor.



BEDROOM

13' 10" x 8' 6" (4.22m x 2.58m)

Two single glazed sliding sash windows, two radiators, coving.

BATHROOM

8' 11" x 7' 0" (2.73m x 2.14m)

Single glazed sliding sash window, heated towel radiator, four piece suite in white comprises W.C., wash hand basin, bath and fully tiled shower cubicle with thermostatic shower fitment, recessed spotlights, extractor fan, fitted mirror, tiling to walls and floor.

SERVICES

Mains electricity, mains gas, mains water, mains drainage.

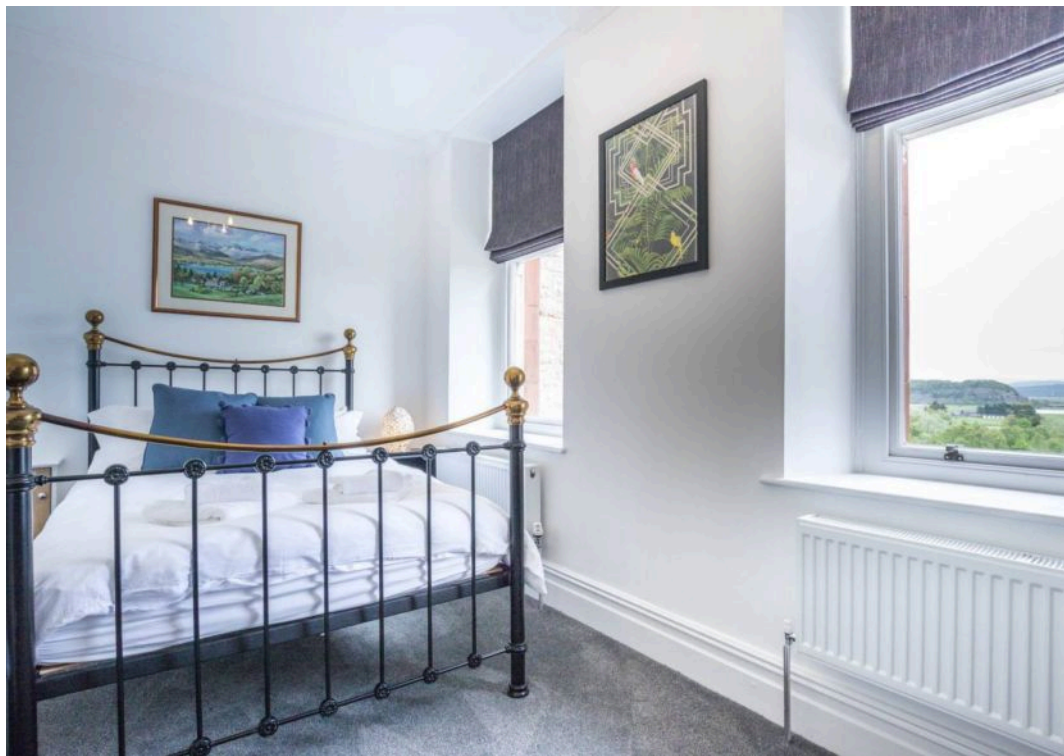
EPC Rating D

LEASEHOLD INFORMATION

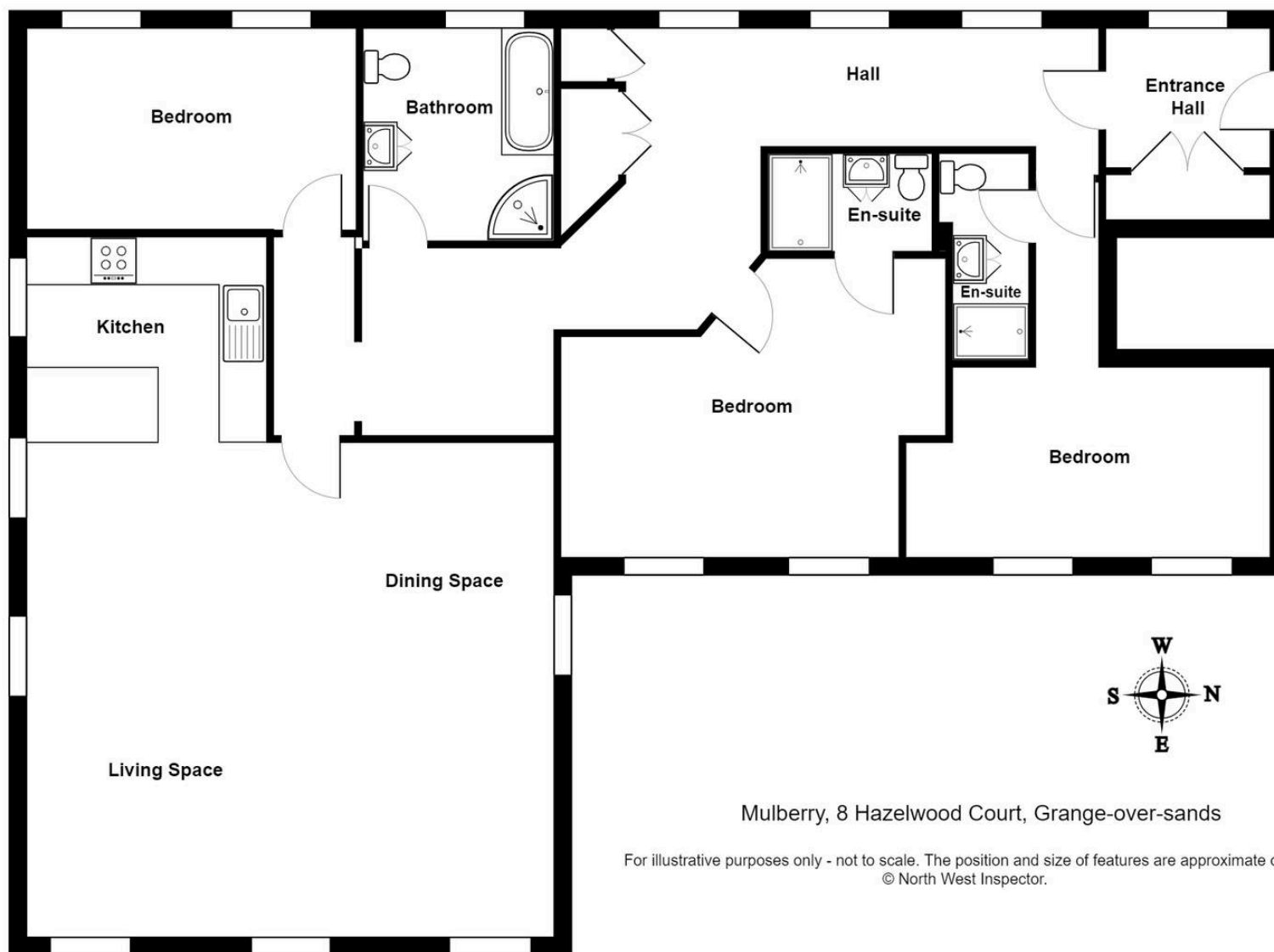
Lease Length - 999 years from 2019

Service Charge - £3,750 per annum









Mulberry, 8 Hazelwood Court, Grange-over-sands

For illustrative purposes only - not to scale. The position and size of features are approximate only.
© North West Inspector.

THW Estate Agents

Palace Buildings Main Street, Grange-Over-Sands - LA11 6AB

015395 33335 • grange@thwestestateagents.co.uk • www.thwestestateagents.co.uk

Please note that descriptions, photographs and plans are for guidance only. Services and appliances have not been tested, measurements are approximate and alterations may not have necessary consents. Contact us for property availability and important details before travelling or viewing properties. THW Estate Agents Ltd is a separate legal entity to the solicitor firm of THW Legal Ltd which has different ownership and clients of THW Estate Agents Ltd do not have the same protection as those of THW Legal Ltd.