



39 Chedington Avenue, Nottingham – NG3 5SG

Guide Price **£425,000**

DavidJames
the estate agent



39 Chedington Avenue

Nottingham, Nottingham

Beautifully-presented 4 bed detached home available with no chain! Ideally positioned for access to Gedling Country Park and Mapperley's amenities, this wonderful property is not to be missed!

Council Tax band: E

Tenure: Freehold

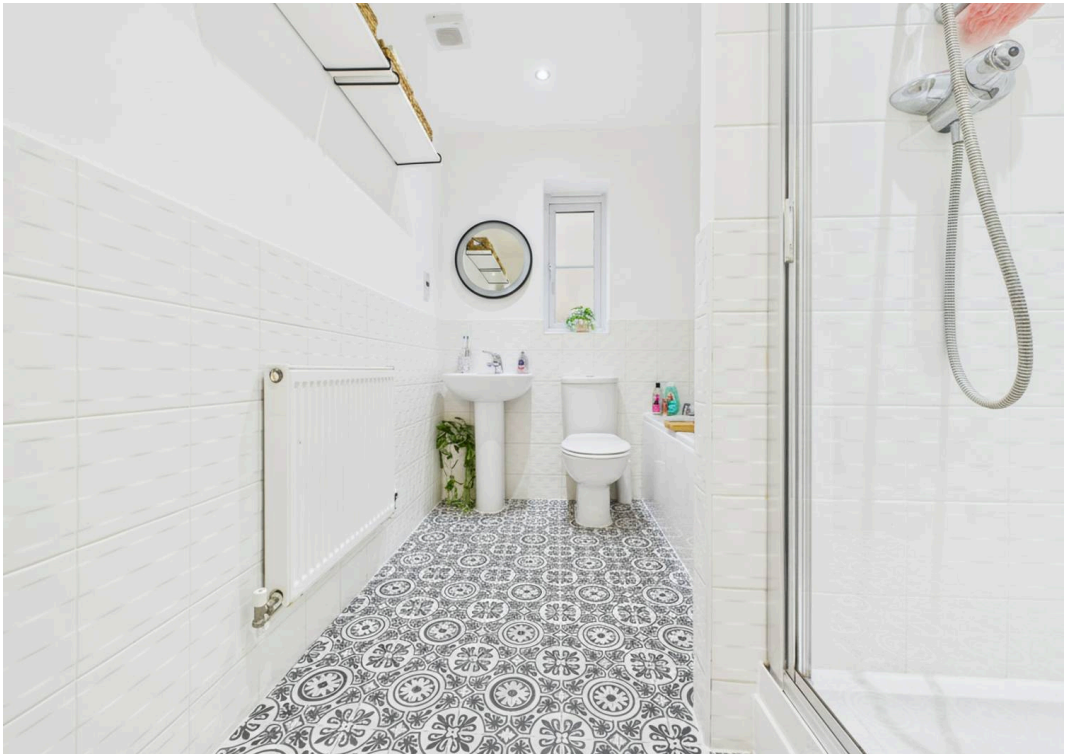
EPC Energy Efficiency Rating: C

EPC Environmental Impact Rating: C

- Beautifully-presented detached family home available with no upward chain
- Ideally positioned for access to Mapperley's nearby amenities, popular schools and transport links
- The stunning Gedling Country Park on the doorstep
- Bright and spacious lounge with French doors opening into a versatile conservatory.
- Conservatory offering flexible additional living space with garden views
- Stylish kitchen featuring integrated appliances and generous space for family dining
- Four bedrooms (including three doubles)
- Main bedroom en-suite, four-piece family bathroom and a convenient ground floor WC
- Low-maintenance enclosed rear garden with paved seating space and artificial lawn
- Driveway providing parking and garage access (with utility to the rear)









Floor 0

Approximate total area⁽¹⁾

123.6 m²

1331 ft²



Floor 1

(1) Excluding balconies and terraces

Calculations reference the RICS IPMS 3C standard. Measurements are approximate and not to scale. This floor plan is intended for illustration only.

GIRAFFE360





David James Estate Agents

David James Estate Agents, 45B Plains Road – NG3 5JU

0115 962 4213 • mapperley@david-james.com • www.david-james.com

These particulars are produced in good faith and are set out as a general guide only. Measurements are approximate and floor plans are for illustrative purposes only. Services have not been tested. We have established professional relationships with third-party suppliers for the provision of services to Clients, details of which can be found on the property listing page on our website.