



**WILLIAM  
THOMAS**  
SALES & LETTINGS

[www.williamthomasestates.co.uk](http://www.williamthomasestates.co.uk)

01204 590130

[info@wtestates.co.uk](mailto:info@wtestates.co.uk)



- Mid-Terrace
- Lounge
- Dining Room
- Kitchen
- Two Bedrooms
- 4-Piece Bathroom
- Rear Garden
- Internal Inspection Highly Advised

## 261 Darwen Road, Bromley Cross, Bolton, BL7 9BS

**Welcome to 261 Darwen Road...**A spacious mid-terrace property situated in the heart of Bromley Cross within easy walking distance of Bromley Cross train station, local amenities and fantastic restaurants and pubs. Briefly comprising of a lounge, dining room, kitchen, two large bedrooms, a 4-piece family bathroom and a generous sized rear garden. An ideal purchase for any first time buyer or investor.

### Step Inside...

Into the entrance vestibule leading through to the spacious lounge, and double doors open up to the dining room, with a feature fireplace to add a cosy focal point. French doors to take you to the back garden as well as a composite door in the kitchen. Continue into the kitchen with cream wall and base units, built in electric oven, gas hob, extractor hood, plumbing for a washing machine and an integrated dishwasher and fridge freezer.

### Bedtime & Baths...

Retrace your steps back to the dining room and upstairs, you will find two large bedrooms and a 4-piece bathroom. The master bedroom is a large double with fitted wardrobes and bedroom two is also a double, with an in built storage cupboard that houses the boiler and views over the rear garden. The 4-piece bathroom is partially tiled and comprises of a sink basin, W.c., enclosed shower, bath and chrome heated towel rail.

### Step Outside...

Into the rear garden, with a flagged patio perfect to position your garden furniture, a lawned area and raised gardening beds surrounding.

To the back of the garden you will find a fenced off area providing space for bin storage and double gates opening to the rear street.

### **Out & About...**

Situated on Darwen Road in Bromley Cross, a convenient location if you need to be within walking distance of the train station taking you straight to Manchester city centre. The village has lots to offer including shops, cafes, restaurants, bars and Jumbles countryside for tranquil walks.

Bromley Cross has a choice of excellent schools close by including Eagley Primary and Turton High School just a short distance away.

**£195,000**

**[www.williamthomasestates.co.uk](http://www.williamthomasestates.co.uk)**

454 Darwen Road Bromley Cross Bolton

## Front Elevations



## Lounge



## Dining Room



## Kitchen







## Master Bedroom



## Bedroom Two



## Bathroom



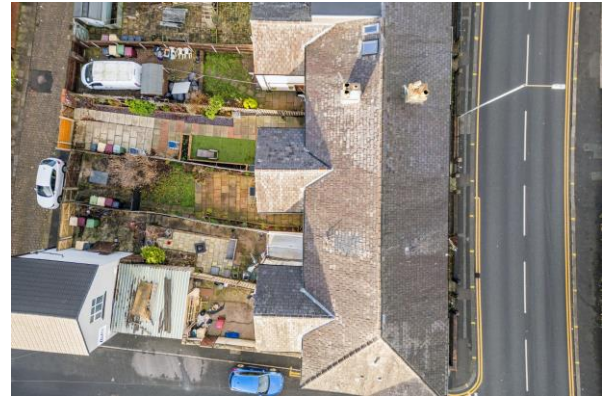


## Back Garden



## Additional External Photos





### Agents Notes

William Thomas Estates for themselves and for vendors or lessors of this property whose agents they are given notice that: (i) the particulars are set out as a general outline only for the guidance of intended purchasers or lessees and do not constitute nor constitute part of an offer or a contract. (ii) all descriptions, dimensions, reference to condition and necessary permissions for use and occupation and other details are given without responsibility and any intending purchasers or tenants should not rely on them as statements or representations of fact but must satisfy themselves by inspection or otherwise as to the correctness of each of them (iii) no person in the employment of William Thomas Estates has authority to make or give any representations or warranty whatever in relation to this property