



Beaumont Court Epsom Road, Epsom

Epsom

£260,000

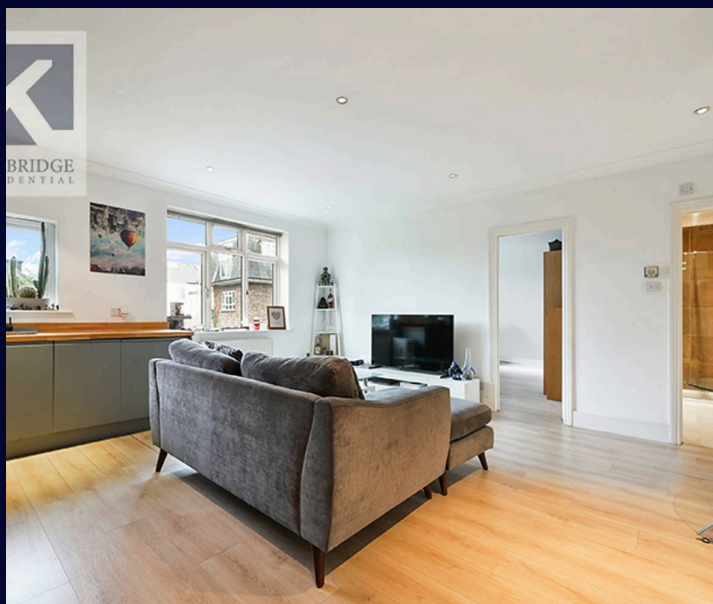


Beaumont Court Epsom Road, Epsom

- First Floor Apartment
- Immaculately Presented
- Low Service Charge
- No Chain
- Allocated Parking Space
- Private Entrance
- Modern Fitted Kitchen

Presenting this immaculate and modern 1-bedroom apartment, located on the first floor and boasting a private entrance. This property provides a contemporary living space with a stylishly fitted kitchen. Offering convenience with an allocated parking space and a low service charge, this apartment is an ideal opportunity for a first-time buyer or investor. With no chain involved, this property is ready for immediate occupation.

Upon entering, you are greeted by a well-proportioned open plan living area with a modern fitted kitchen, creating a seamless living experience. The bedroom offers a tranquil retreat, providing a peaceful space for relaxation. Situated in a sought-after area, this apartment benefits from easy access to local amenities and transport links, enhancing its appeal.



In conclusion, this carefully maintained apartment presents an excellent opportunity to acquire a comfortable and convenient living space with modern features. Don't miss out on the chance to make this property your own.

Council Tax band: B

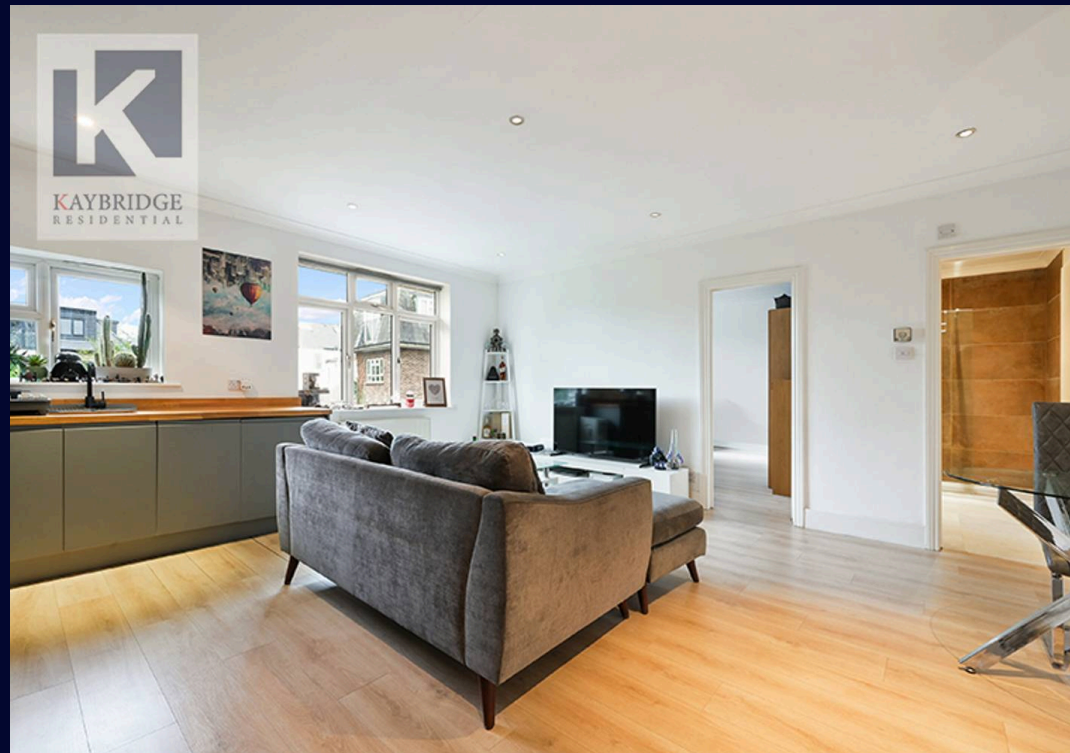
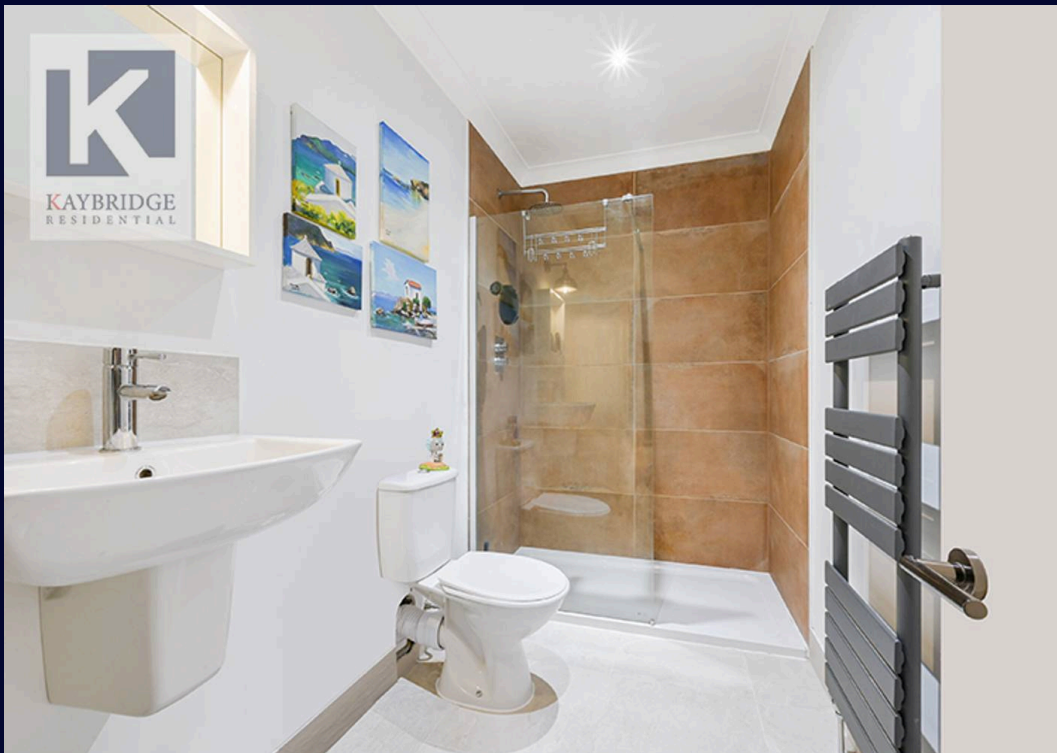
Tenure: Leasehold

EPC Energy Efficiency Rating: D

EPC Environmental Impact Rating: D

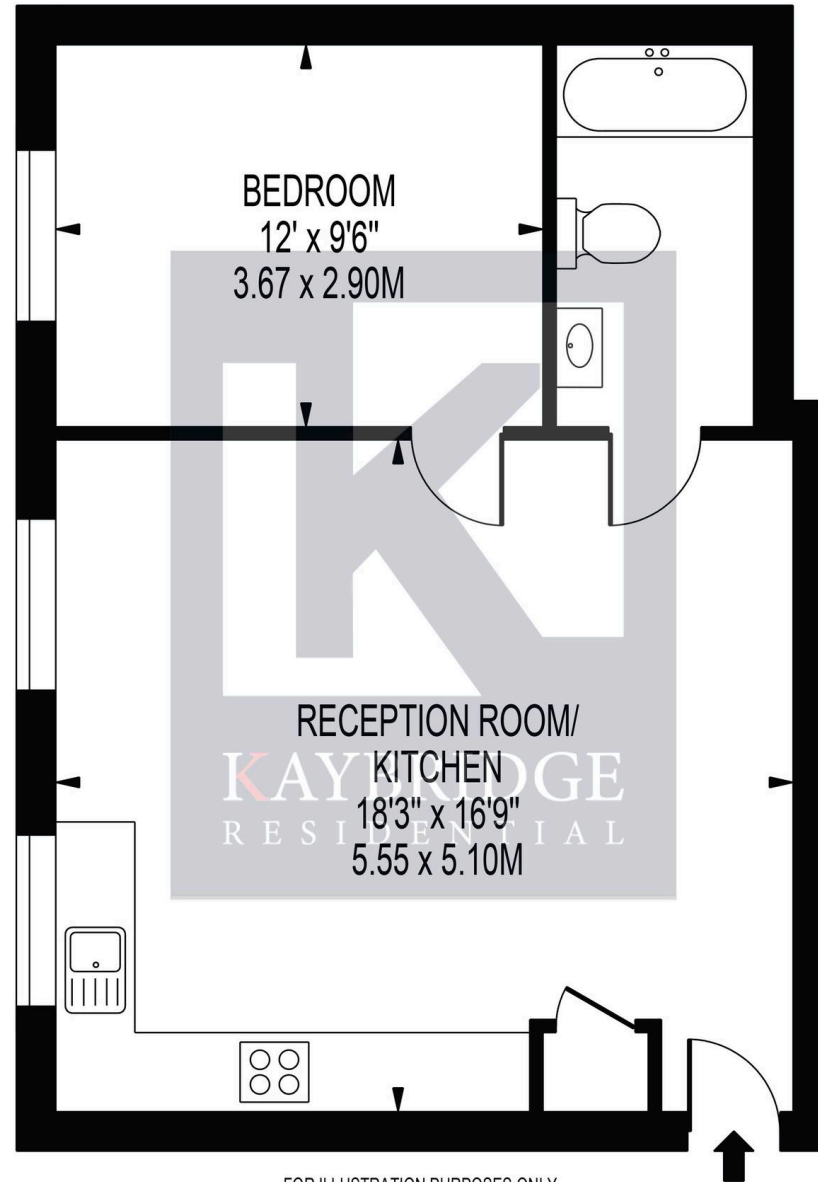
Discover Epsom – A Desirable Surrey Town Epsom is a historic and highly sought-after market town in Surrey, offering an ideal balance of countryside charm and modern convenience. Just 15 miles from London, it's a top choice for families and professionals who want green space without compromising on connectivity. Epsom station provides direct trains to London Waterloo, Victoria, and London Bridge in under 40 minutes, while major roads like the A3 and M25 are easily accessible. The town is best known for the world-famous Epsom Derby and is surrounded by beautiful open spaces including Epsom Downs, Horton Country Park, and Nonsuch Park. These green areas are perfect for walking, cycling, and enjoying the outdoors. Epsom's vibrant town centre offers a variety of shops, cafés, pubs, and restaurants, plus the Ashley Centre for retail and the Epsom Playhouse for entertainment. Weekly markets and local events add to its strong community feel. Families are especially drawn to Epsom for its excellent schools, such as Rosebery, Glyn, and the prestigious Epsom College. Housing in the area ranges from charming period homes and Edwardian villas to modern apartments and family houses, with popular areas including Woodcote, College Area, and nearby Ewell Village. With its mix of heritage, greenery, excellent amenities, and great schools, Epsom continues to be one of Surrey's most desirable places to live.





BEAUMONT COURT

APPROXIMATE GROSS INTERNAL FLOOR AREA: 479 SQ FT - 44.46 SQ M



FOR ILLUSTRATION PURPOSES ONLY

THIS FLOOR PLAN SHOULD BE USED AS A GENERAL OUTLINE FOR GUIDANCE ONLY AND DOES NOT CONSTITUTE IN WHOLE OR IN PART AN OFFER OR CONTRACT. ANY INTENDING PURCHASER OR LESSEE SHOULD SATISFY THEMSELVES BY INSPECTION, SEARCHES, ENQUIRIES AND FULL SURVEY AS TO THE CORRECTNESS OF EACH STATEMENT. ANY AREAS, MEASUREMENTS OR DISTANCES QUOTED ARE APPROXIMATE AND SHOULD NOT BE USED TO VALUE A PROPERTY OR BE THE BASIS OF ANY SALE OR LET.



Kaybridge Residential Estate Agents

Kaybridge Residential Estate Agents, 23 Stoneleigh Broadway - KT17 2JE

02080040474 • info@kbridge.co.uk • www.kaybridgeresidential.co.uk/

The information contained in this brochure is provided for marketing purposes only. We have not been independent of the details provided, Kaybridge cannot guarantee that the information is correct, complete, or up-to-date. The content is for general information only and may not represent its price or value. Please contact us for more information.

