



3 Park View | Kiveton Park | Sheffield | S26 6SE

Guide Price £190,000 to £200,000

Bell & Co Estates are delighted to present this beautifully maintained two-bedroom semi-detached bungalow, perfectly positioned in the heart of Kiveton Park and offered to the market with no chain. Thoughtfully updated throughout, this property is ready to move straight into and would suit a range of buyers. In brief, the accommodation comprises a welcoming entrance hall with a useful storage cupboard, a spacious front-facing lounge featuring a charming bay window that floods the room with natural light, and an attractive electric fire with surround. The modern open-plan kitchen offers ample worktop and cupboard space, integrated appliances, and leads seamlessly into the bright conservatory overlooking the tranquil rear garden. There are two well-proportioned bedrooms, each benefiting from fitted cupboards and wardrobes, along with a contemporary family bathroom fitted with a shower over bath, wash basin and WC. Externally, the property enjoys a lawned front garden and a generous paved driveway, complete with side gate giving access to the landscaped rear garden. Designed for low maintenance, the garden features a tiered layout with artificial grass and a patio area, providing an ideal space to relax or entertain. Situated close to a wide range of local amenities, reputable schools and excellent transport links, this property occupies a highly convenient and desirable location. Call Bell & Co Estates now!



3 PARK VIEW

APPROXIMATE GROSS INTERNAL AREA = 70.7 SQ M / 761 SQ FT

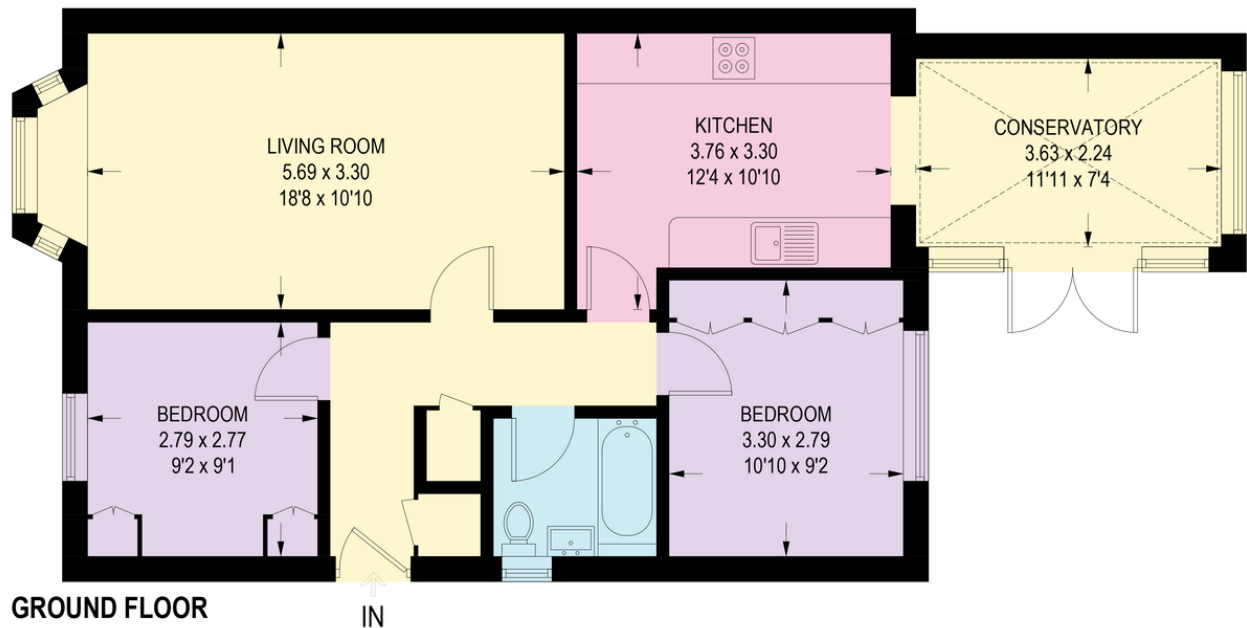


Illustration is for identification purposes only,
measurements are approximate, not to scale.

Contact Details

79 Wales Road
Kiveton Park
Sheffield
South Yorkshire
S26 6RA

www.bellcoestates.com
info@bellcoestates.com
03333 580590

Agents Note: Whilst every care has been taken to prepare these sales particulars, they are for guidance purposes only. All measurements are approximate for general guidance purposes only and whilst every care has been taken to ensure their accuracy, they should not be relied upon and potential buyers are advised to recheck the measurements