



15 Homefield Close, Billericay - CM11 2SG

£475,000 Freehold

Well presented four bedroom semi detached house, newly carpeted throughout, with downstairs cloakroom and garage. South East facing rear garden.

Council Tax band: D ~ EPC Energy Efficiency Rating: D



tyler estates

01277 626181

www.tylerestates.co.uk



Lounge / Diner
25' 4" x 10' 6" (7.72m x 3.21m)

Kitchen
9' 4" x 9' 2" (2.85m x 2.79m)

Cloakroom

Landing

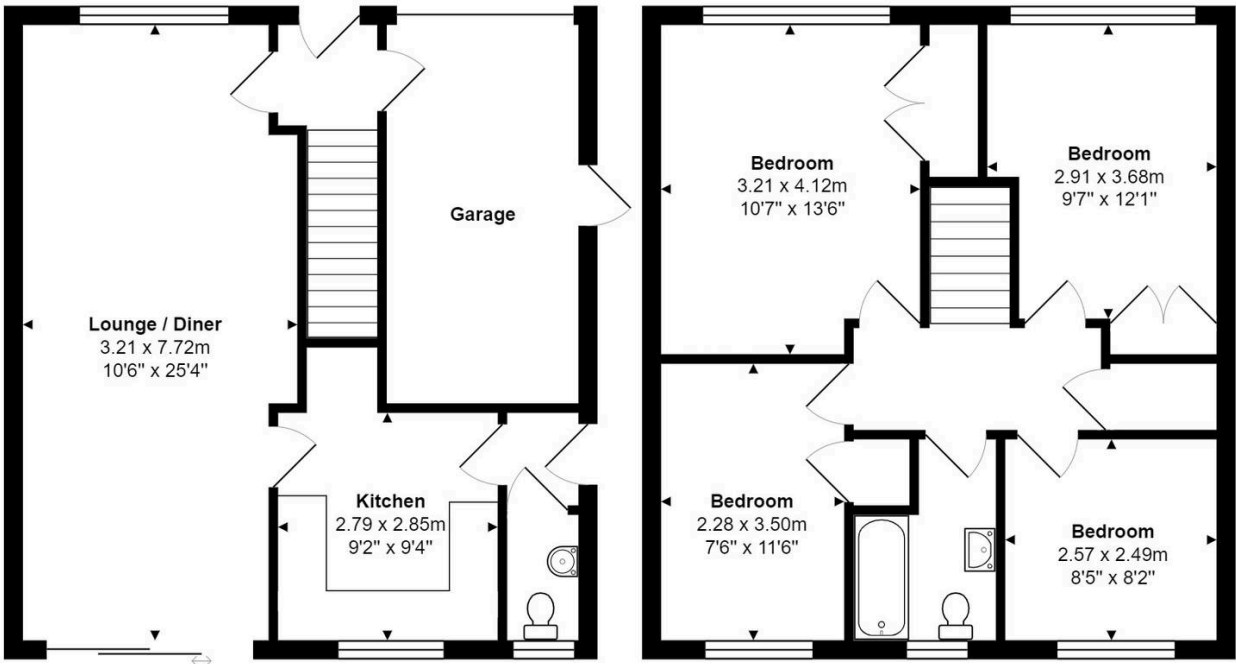
Bedroom 1
13' 6" x 10' 6" (4.12m x 3.21m)

Bedroom 2
9' 7" x 12' 1" (2.91m x 3.68m)

Bedroom 3
11' 6" x 7' 6" (3.50m x 2.28m)

Bedroom 4
8' 2" x 8' 5" (2.49m x 2.57m)

Bathroom



Total Area: 107.8 m² ... 1160 ft²

Measurements are approximate for illustrative purposes only and may have been taken from the widest area
Floorplan Copyright The Estate Agent's Photographer
www.theestatesgentsphotographer.co.uk