



Ellesmere Road, London, NW10.
£3,500 pcm

Ellesmere Road, London, NW10.

London, London

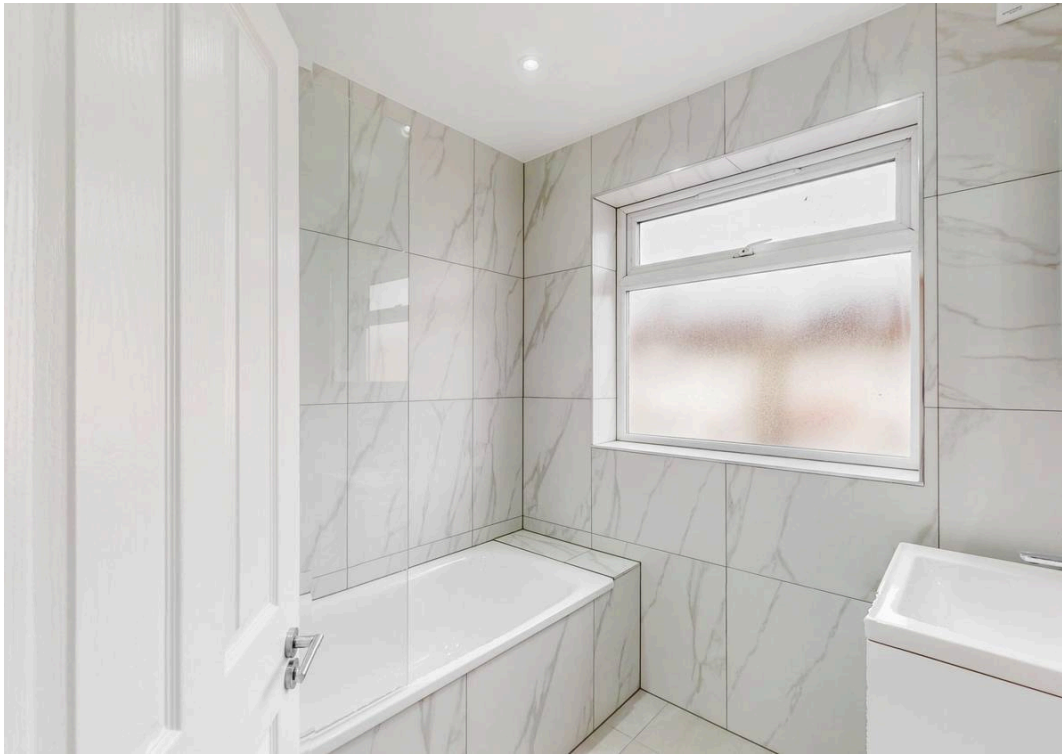
A large, recently renovated 4-bedroom house located on Ellersmere Road, Dollis Hill. The property features a spacious double reception room, perfect for both living and dining areas. There is also a modern separate kitchen equipped with all necessary appliances.

The house boasts 4 large double bedrooms, providing ample space for everyone. One bedroom is conveniently located on the ground floor, while the remaining three are situated upstairs. With two modern bathrooms, the property is ideal for sharers or a family, offering plenty of room and convenience.

The large private garden is a standout feature, offering a great outdoor space for relaxation, gardening, or entertaining.

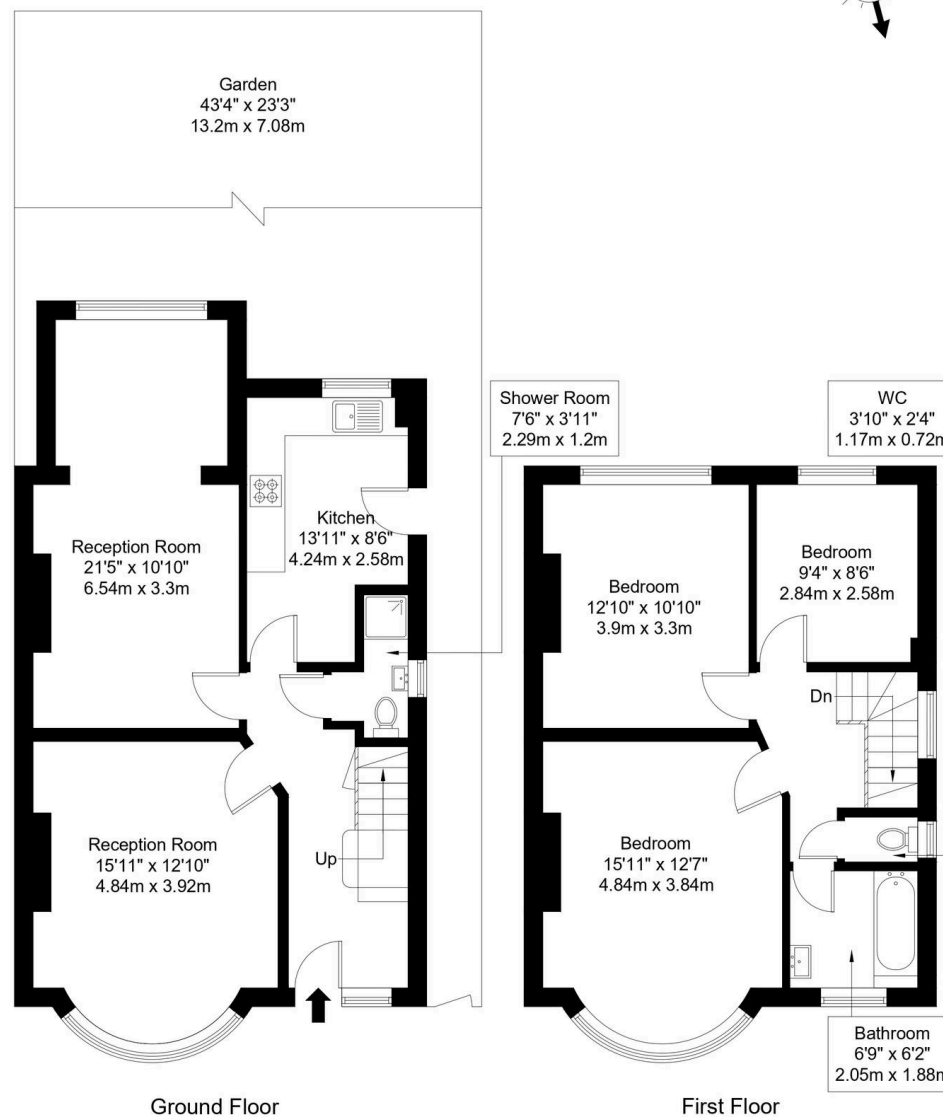
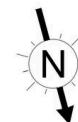
This property is available either furnished or unfurnished, depending on your preference. Located in the sought-after area of Dollis Hill, it's close to local amenities, parks, and excellent transport links, making it easy to get around London.





Ellesmere Road, NW10 1LH

Approx Gross Internal Area = 111.7 sq m / 1202 sq ft



Ref :

Copyright

B L E U
P L A N

The Floor plan is not to scale and measurements and areas shown are approximate and therefore should be used for illustrative purposes only. The plan has been prepared in accordance with the RICS code of Measuring Practice and whilst we have confidence in the information produced it must not be relied on. Maximum lengths and widths are represented on the floor plan. If there is any aspect of particular importance, you should carry out or commission your own inspection of the property.

Copyright @ BleuPlan



Black Katz

22 West Hampstead Mews, London - NW6 3BB

02073285000 • Thomas@blackkatz.com • blackkatz.com/