

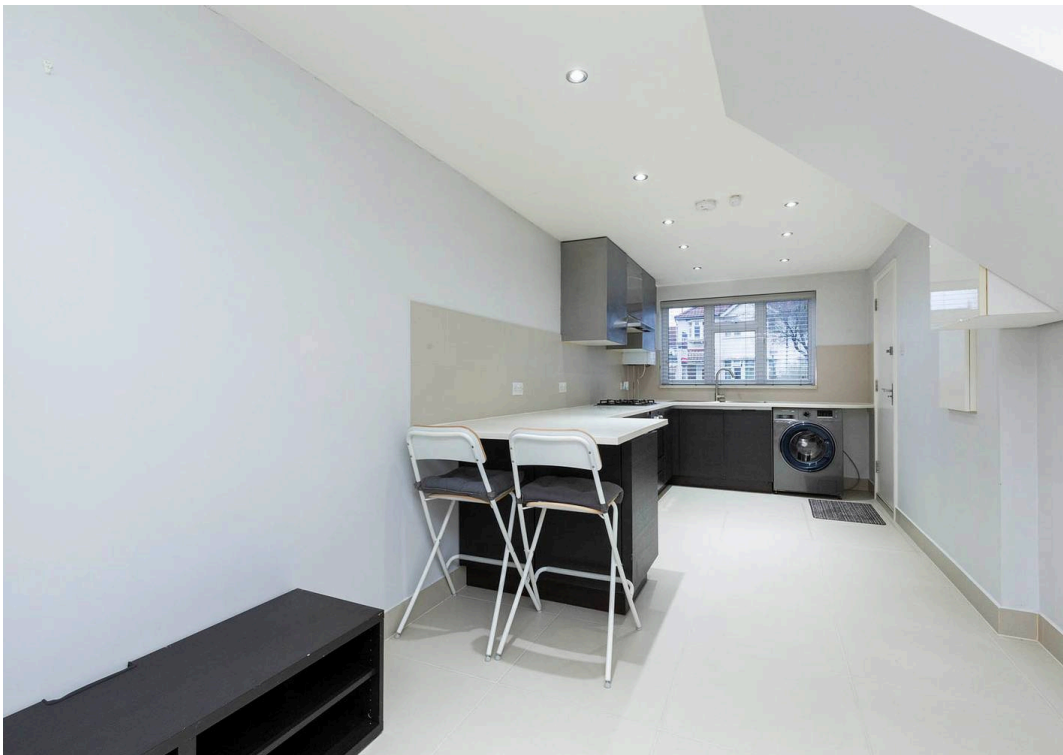


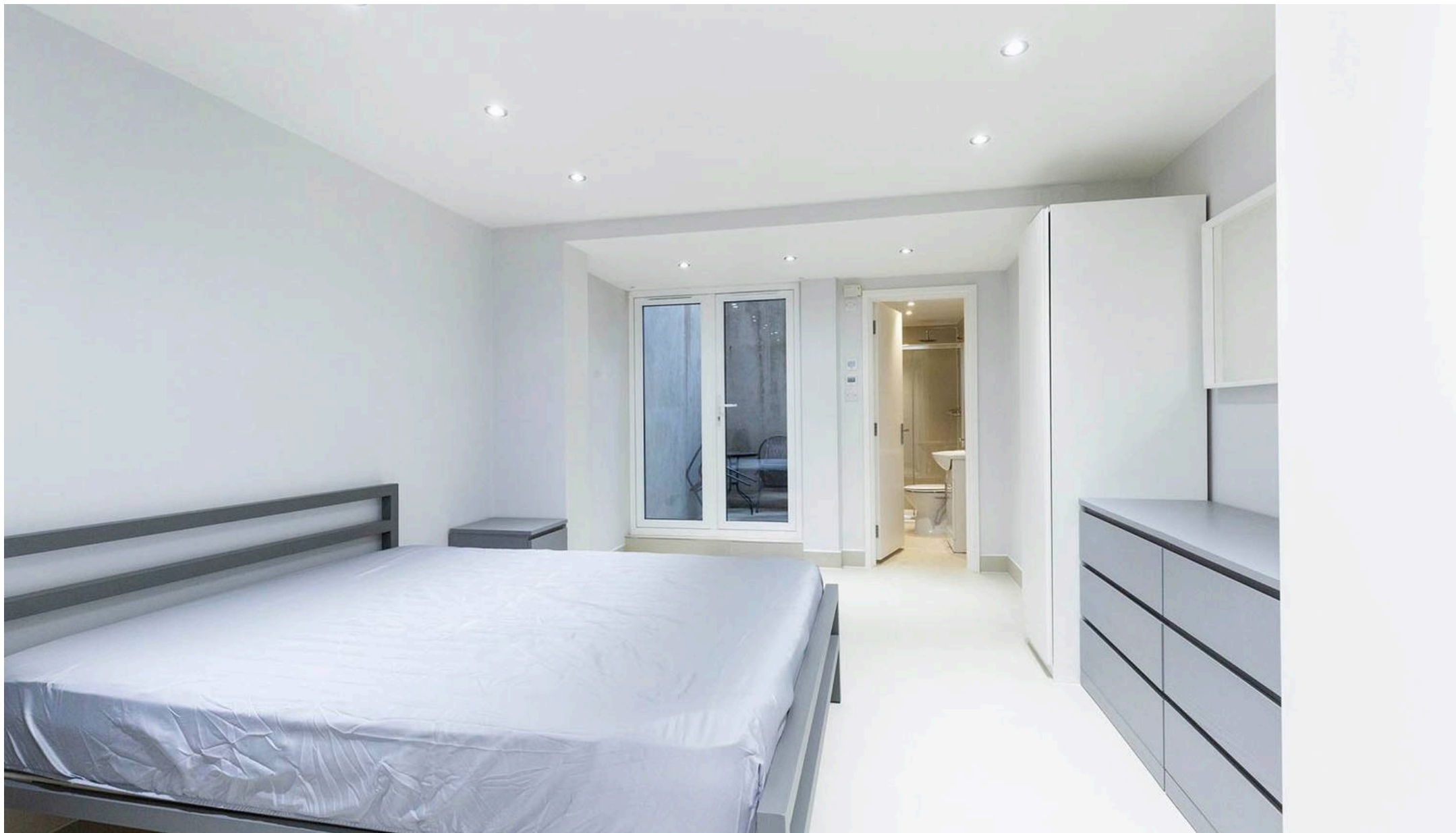
Burnley Road, London, NW10
£1,625 pcm

Burnley Road, London, NW10

A spacious one bed a short walk from Dollis Hill Tube (JUBILEE LINE). The property has bright neutral décor, wood floors throughout and a separate bedroom modern fitted kitchen and tiled bathroom. This is great value for money property and quick viewings are highly recommended.







Black Katz

22 West Hampstead Mews, London - NW6 3BB

02073285000 • Thomas@blackkatz.com • blackkatz.com/