



## 6 Millport Close, Fearnhead

£425,000 Freehold

Stunning 4 bedroom detached home set in quiet modern cul de sac in popular location • Extended downstairs to create wonderful open plan kitchen with dining and lounge area • 4 double bedrooms – with en-suite to master bedroom • Large rear garden with private aspect to rear • Downstairs toilet and separate utility / laundry room • Parking for 3/4 cars at front of property • Large en-suite with high quality fittings, and family bathroom • Being sold on a FREEHOLD basis







Welcome to this stunning four-bedroom detached home, perfectly positioned in a quiet, modern cul-de-sac within one of the area's most sought-after neighbourhoods. Thoughtfully extended downstairs, the property now boasts a spectacular open-plan kitchen, seamlessly merging with a spacious dining and lounge area to create an inviting heart of the home - ideal for both relaxed family living and stylish entertaining.

Each of the four bedrooms is a generously sized double, ensuring ample space for family and guests, while the master suite impresses with a luxurious en-suite bathroom featuring high-quality fittings for an indulgent retreat. A contemporary family bathroom serves the remaining bedrooms, and a convenient downstairs toilet adds further practicality. The separate utility and laundry room is a welcome addition, offering excellent storage and keeping the main living areas clutter-free. At the front of the property, you will find off-road parking for three to four vehicles, making daily life hassle-free for households with multiple cars or visitors. This home benefits from a private rear aspect, affording a sense of peace and seclusion that is rarely found in modern developments.

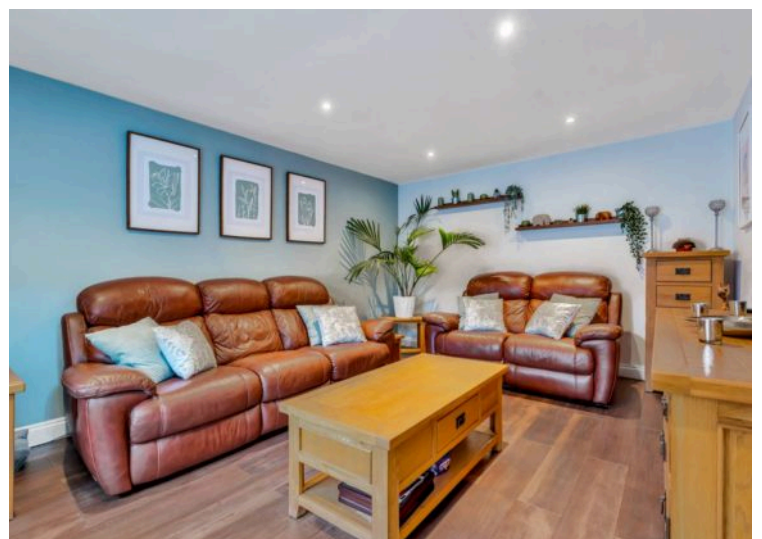
The location is truly exceptional, with supermarkets, a range of highly regarded schools, and reliable transport links all within easy reach. Residents will appreciate the proximity to essential services, including local hospitals, medical centres, and pharmacies, as well as leisure amenities such as parks, gyms, and a vibrant selection of cafes, restaurants, and shops.

The home's flexible layout and generous proportions make it ideal for growing families or those seeking space to work from home. With its blend of modern design, practical features, and a prime position close to everything you need, this property offers a rare opportunity to secure a forever family home in a thriving community.

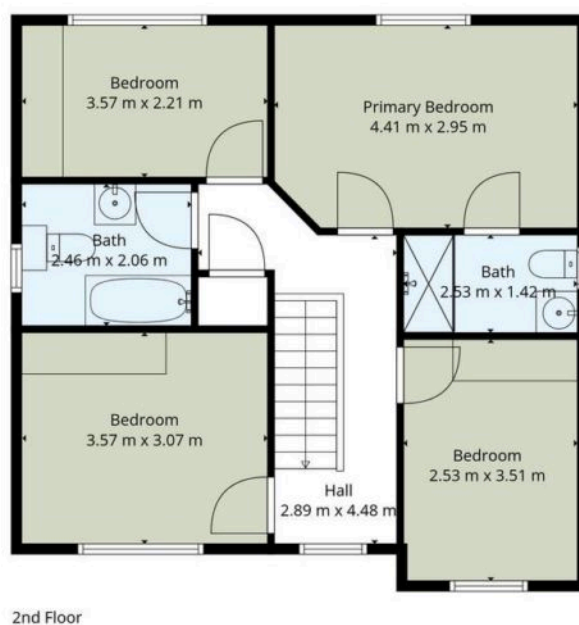
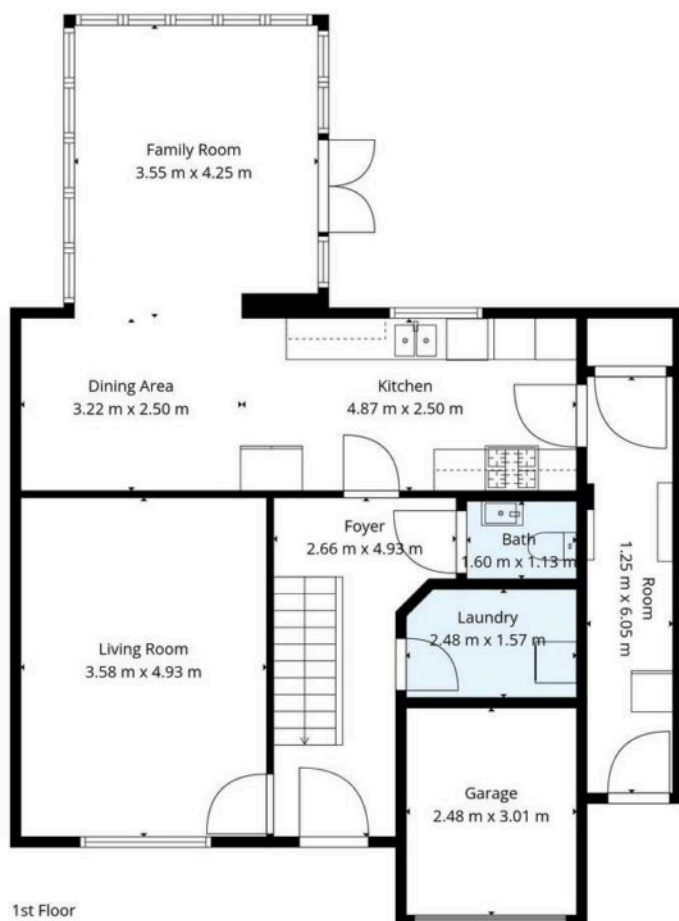
The property is being sold on a freehold basis, providing peace of mind and long-term security. Don't miss the chance to make this exceptional residence your own - enquire now to arrange your private viewing.











**TOTAL: 142 m2**  
 1st floor: 80 m2, 2nd floor: 62 m2  
 EXCLUDED AREAS: GARAGE: 7 m2, WALLS: 13 m2

The Floor Plans Above Are The Property Of Infinite Property Ltd And Are Subject To, And Are Protected By, Copyright And Trademark Laws