



Eversley Avenue, Bexleyheath

£1,550 pcm



WILLIAM CHARLES

PROPERTY SERVICES LIMITED



Welcome to this cosy 2 bedroom semi-detached maisonette located on the first floor. Perfect for those seeking a comfortable living space in a convenient location. As you step inside, you'll find a spacious living room that is ideal for relaxing or entertaining friends and family.

The kitchen is bright and airy, allowing for easy meal preparation with its modern fixtures. Both bedrooms offer ample space for rest and relaxation, making it easy to unwind after a long day. The private garden is a hidden gem, providing a serene outdoor space for enjoying a morning coffee or hosting a barbeque.

Located in a sought-after area, this property offers easy access to local amenities, shops, and transport links, making it a great choice for those looking for convenience. Don't miss out on the opportunity to make this charming maisonette your new home sweet home!







Eversley Avenue, Bexleyheath

Council Tax band: C

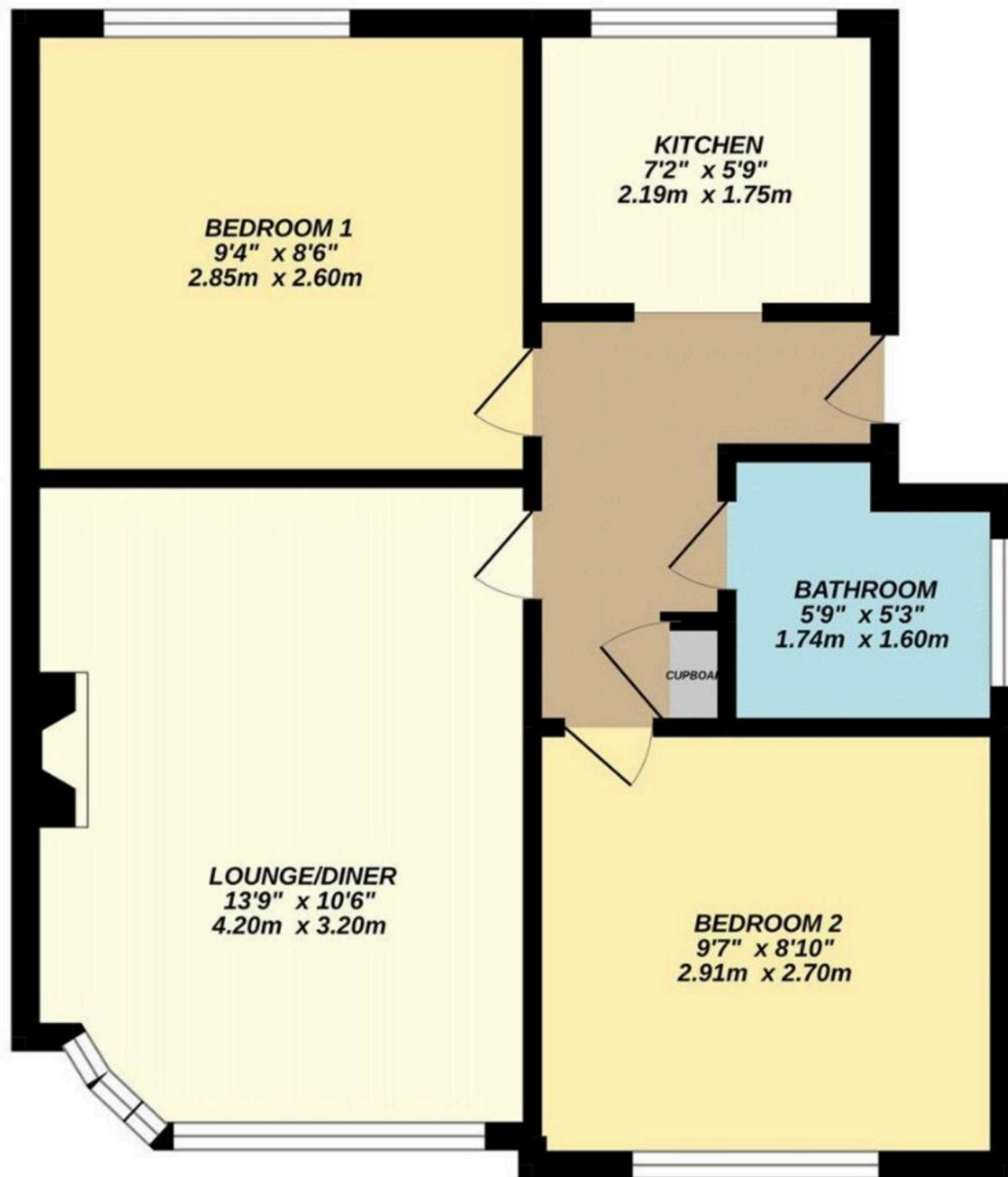
Tenure: Leasehold

EPC Energy Efficiency Rating: D

EPC Environmental Impact Rating: D

- 2 Bedrooms
- First Floor
- Maisonette
- Private Garden
- Sought After Location
- Close to Local Amenities
- Good Transport Links







William Charles Property Services

William Charles Property Services, 1 Bromley Road, Chislehurst - BR7 6LH

02082648264

info@williamcharlesgroup.com

<http://williamcharlesgroup.com>

