



23 Greenland Mews, London

London

Offers Over £375,000





## 23 Greenland Mews

London, London

Newly redecorated, this one bedroom, mid-terrace house is located in the secure cul-de-sac Greenland Mews. The property offers secure phone operated gates and is also within walking distance from Surrey Quays Overground station (0.6 miles) and South Bermondsey train station (0.9 miles) along with many bus routes.

The property comprises of a generous double bedroom with balcony and bathroom on the top floor, a first floor reception room and kitchen, and garage on the ground floor.

Greenland Mews is a small private street managed by a well-respected local management company. This particular unit is freehold, avoiding the usual lease and ground rent issues associated with the price point.

Council Tax band: C

Tenure: Freehold

EPC Energy Efficiency Rating: E

EPC Environmental Impact Rating: E

- 1 bedroom
- Freehold
- Balcony
- Close to Deptford park
- Surrey Quays Overground Station, 0.6 Miles
- Surrey Quays shopping Centre, 0.7 Miles

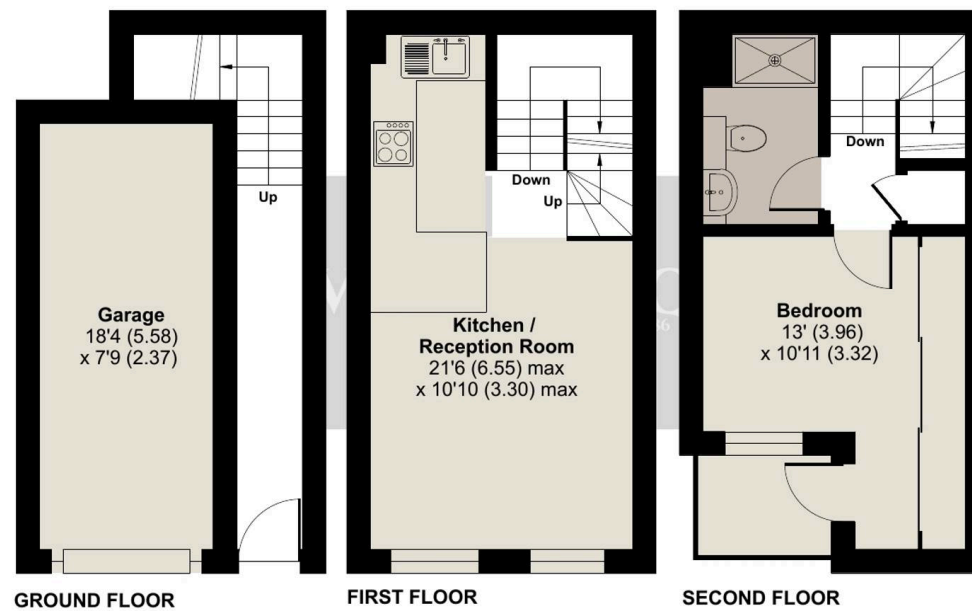
## Greenland Mews, London, SE8

Approximate Area = 527 sq ft / 48.9 sq m

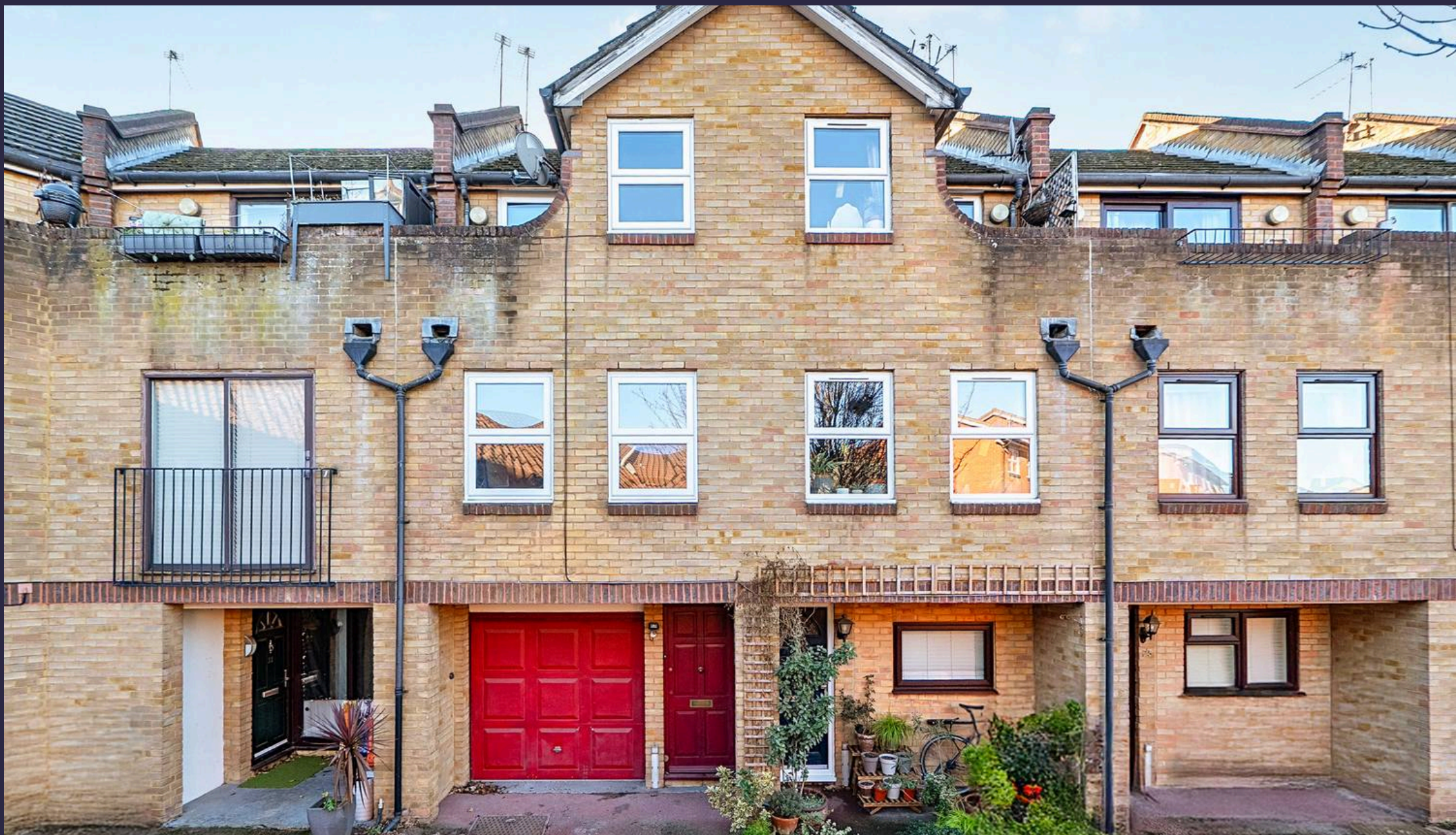
Garage = 133 sq ft / 12.3 sq m

Total = 660 sq ft / 61.3 sq m

For identification only - Not to scale







## Oliver Jaques

Oliver Jaques, 229-231 Lower Road - SE16 2LW

02072315050 • southeast@o-j.co.uk • o-j.co.uk/

Every care has been taken with the preparation of this brochure but it is for general guidance and complete accuracy can't be guaranteed. Prospective purchasers should seek clarification from their solicitor. The mention of any appliances fixtures or fittings does not imply they are in working order.