



Falkirk Drive, Eccles

Manchester



£325,000



# Falkirk Drive

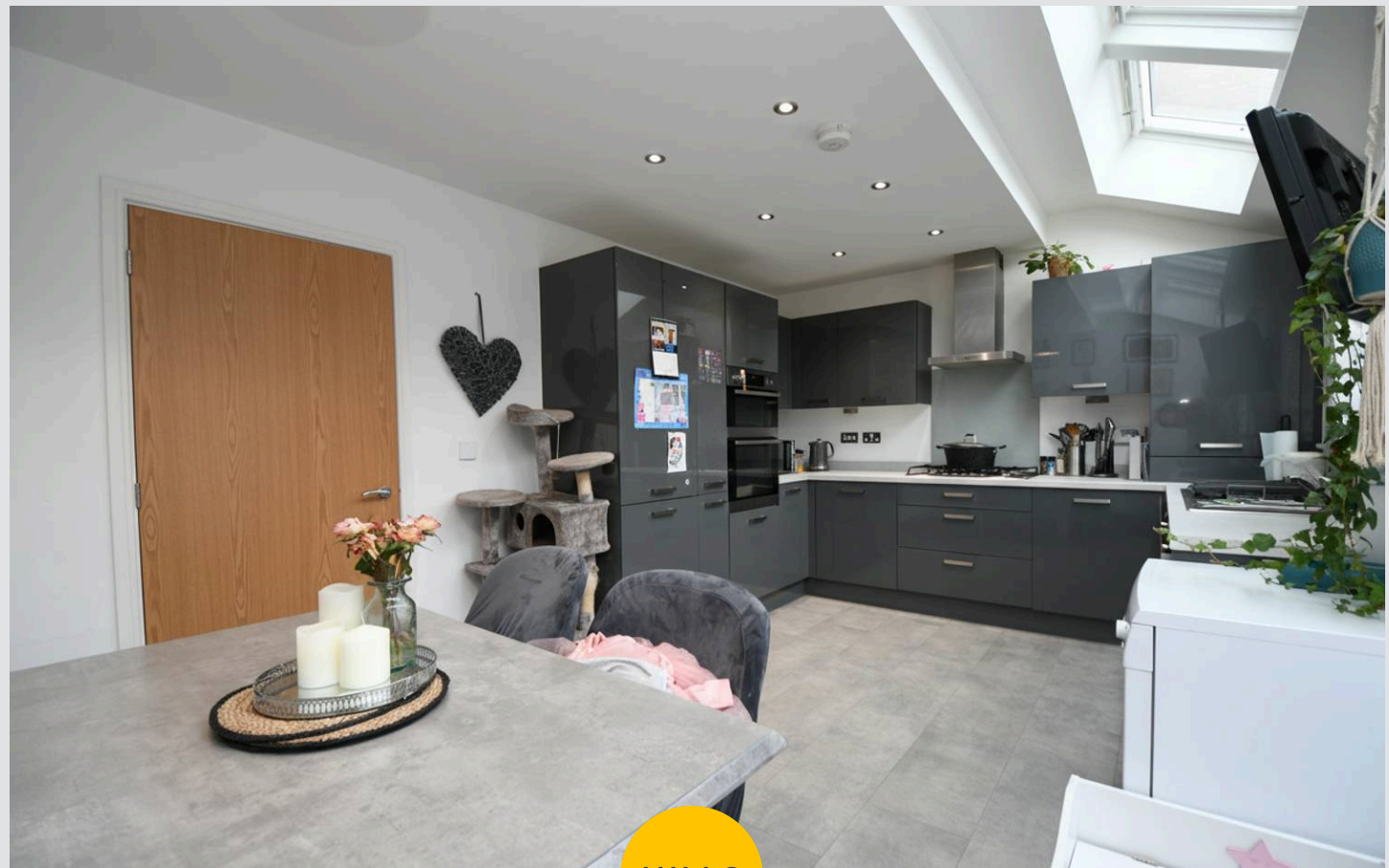
Eccles, Manchester

Welcome to this fantastic three bedroom semi-detached property nestled within the desirable Havenswood Development, offering a modern and luxurious living experience.

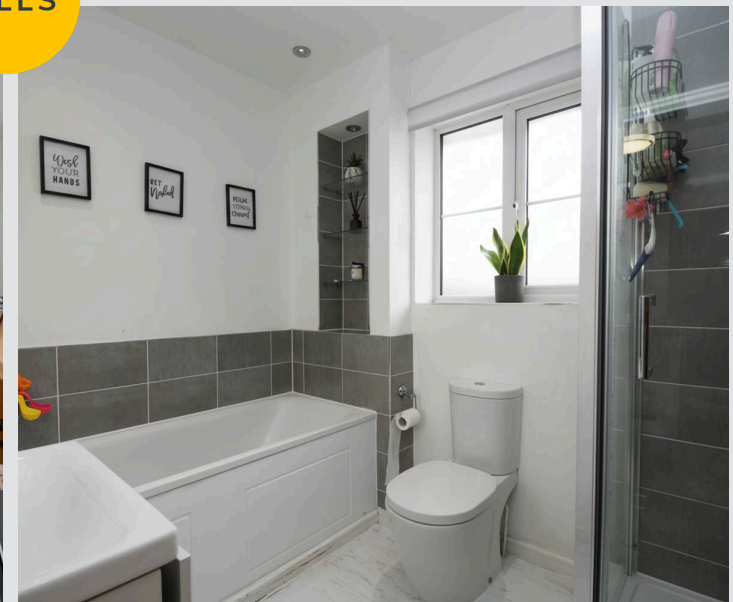
Council Tax band: C

Tenure: Freehold

- Stunning Three bedroom semi-detached New Build Property Located on the Desirable Havenswood Development
- Family lounge and modern open plan kitchen diner complete with velux windows
- Driveway to the front for off-road parking
- Low maintenance rear garden complete with paving and laid-to-lawn grass
- Three generous sized bedrooms
- Contemporary four-piece bathroom suite and downstairs W.C.
- Excellently Located within Walking Distance to Local Amenities, Public Transport Links & Close to Motorway Network
- Within Catchment For Outstanding Schools



HILLS



**Entrance Hallway**

16' 1" x 3' 10" (4.90m x 1.17m)

**Downstairs W.C.**

4' 1" x 6' 4" (1.24m x 1.94m)

**Lounge**

11' 1" x 16' 6" (3.37m x 5.04m)

**Kitchen**

17' 9" x 11' 8" (5.40m x 3.56m)

**Landing****Bedroom One**

9' 3" x 11' 3" (2.81m x 3.42m)

**Bedroom Two**

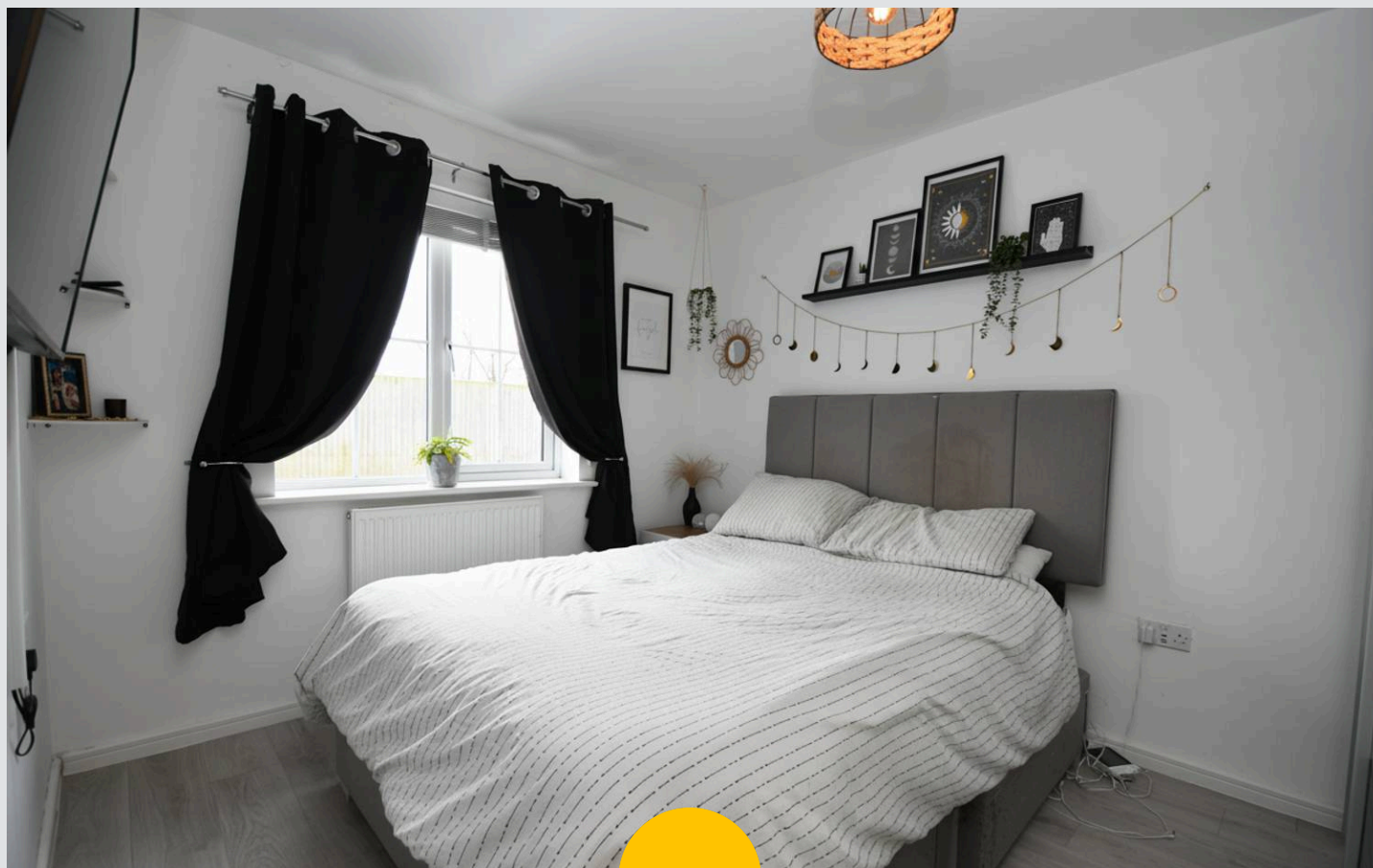
9' 1" x 10' 9" (2.76m x 3.28m)

**Bedroom Three**

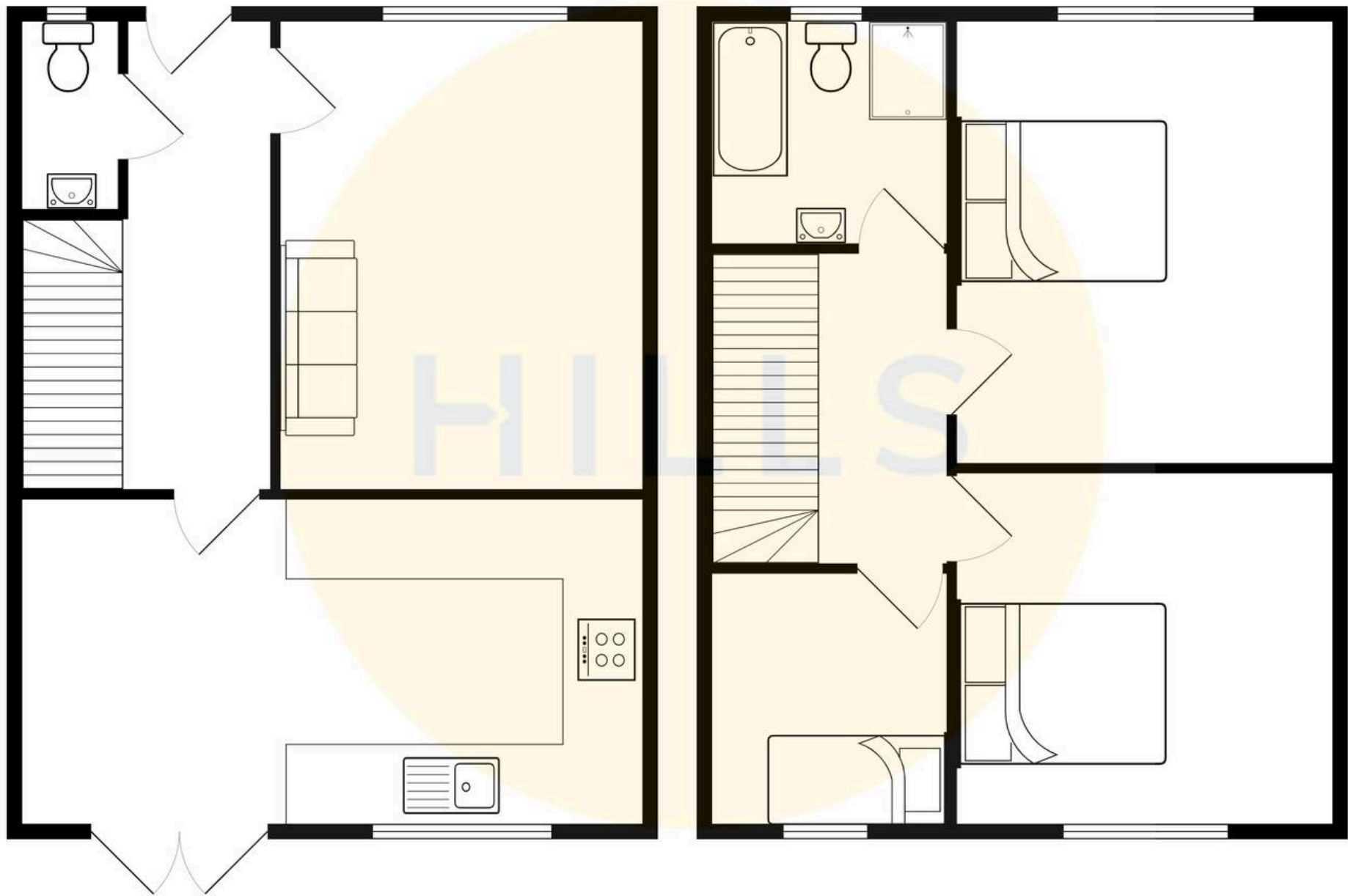
7' 0" x 8' 8" (2.14m x 2.64m)

**Bathroom**

7' 0" x 8' 7" (2.14m x 2.62m)











## Hills | Salfords Estate Agent

Hills Residential, Sentinel House Albert Street – M30 0SS

0161 707 4900

[sales@hills.agency](mailto:sales@hills.agency)

[www.hills.agency/](http://www.hills.agency/)



By law, we are required to conduct anti-money laundering checks on all potential buyers and sellers. In line with HMRC guidelines, our trusted partner, Coadjute, will securely manage these checks on our behalf. A non-refundable fee of £45 + VAT per person will apply, and Coadjute will handle the payment. Once an offer is accepted, Coadjute will send a secure link for you to complete the biometric checks. These checks must be completed before we can send the memorandum of sale to all parties. PLEASE NOTE: The Agent has not tested any equipment, fixtures, fittings or services so cannot verify that they are in working order or fit for the purpose. References to the properties tenure are based on information supplied by the seller. You are advised to check the availability of this property before travelling any distance to view. Every effort has been made to ensure these particulars are correct and not misleading but their accuracy is not guaranteed nor do they form part of any contract.