

HOME  TRUTHS



Richmond Road, Ecclestone

PR7 5SR





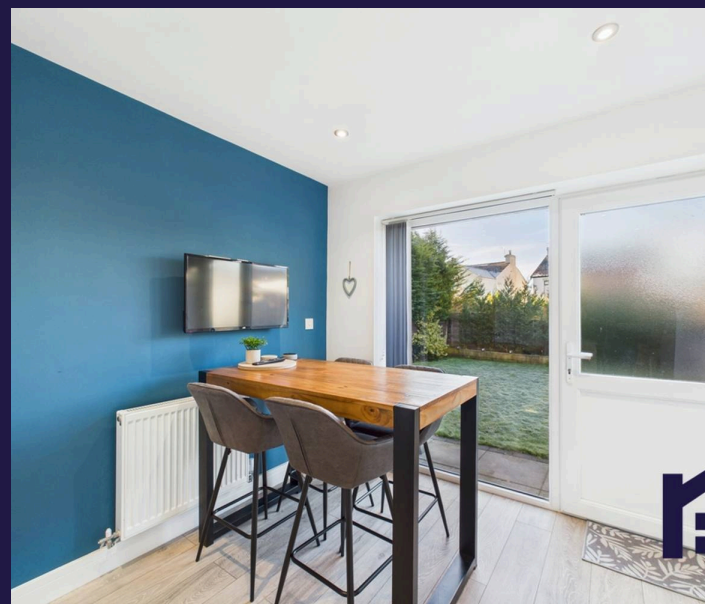
Tucked away on a spacious corner plot and beautifully remodelled and refurbished, this impressive semi detached family home is ideally positioned within easy reach of village amenities, countryside walks and excellent schools. To the front, the driveway provides ample off road parking and leads past the detached garage to the main entrance. Step into the welcoming hallway, which flows through to the well proportioned living room, a comfortable space to unwind. To the rear, Reception Two enjoys views over the garden through patio doors, while the light filled dining kitchen forms the heart of the home and comprises a range of wall and base units with electric oven and hob by Zanussi, dishwasher, washing machine, refrigerator, freezer and wine cooler.

Completing the ground floor accommodation is Bedroom Three, a good sized double to the front, along with the elegant ground floor bathroom, comprising rainfall mixer shower in cubicle, wc and wash hand basin on vanity.

Step outside into the very private, south west facing garden, featuring a sun terrace, lawn bordered by mature planting and a bespoke dog run, making this a wonderful space in which to relax and entertain.

Back inside, stairs rise to the first floor landing, where you'll find the spacious principal bedroom, a comfortable single bedroom, and the first floor bathroom, comprising bath with shower attachment, wc and wash hand basin on vanity.

A beautifully presented home in a sought-after location, early viewing is highly recommended.



Tucked away on a spacious corner plot and beautifully remodelled and refurbished, this impressive semi detached family home is ideally positioned within easy reach of amenities, walks and schools.

Council Tax band: C

Tenure: Freehold

EPC Energy Efficiency Rating: D

- Spacious semi detached property
- Beautifully presented
- Three bedrooms
- Two bathrooms
- Virtual tour
- Garage and ample parking



HOME  TRUTHS

Eccleston Branch

265 The Green, Eccleston, PR7 5TF
01257 451673

Coppull Branch

244 Spendmore Lane, Coppull, PR7 5DE
01257 794588

www.hometruthslancs.co.uk
office@hometruthslancs.co.uk





Floor 1 Building 1



Floor 2 Building 1



Floor 1 Building 2

Approximate total area⁽¹⁾

102.8 m²

1106 ft²

Reduced headroom

7.4 m²

79 ft²

(1) Excluding balconies and terraces

Reduced headroom

Below 1.5 m/5 ft

Calculations reference the RICS IPMS 3C standard. Measurements are approximate and not to scale. This floor plan is intended for illustration only.

GIRAFFE360