



The Northfield, London Road
Tetbury

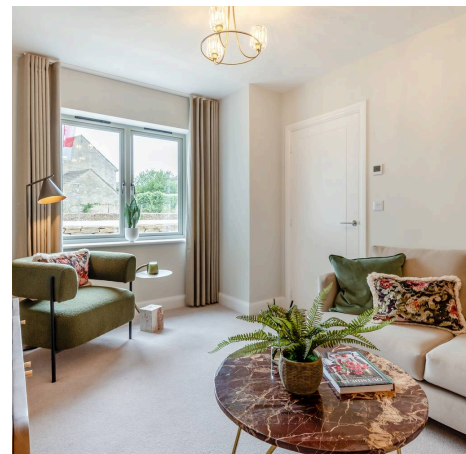
£599,000



The Northfield, London Road Tetbury

Presenting this OUTSTANDING FOUR DOUBLE BEDROOM MID-TERRACED HOUSE, thoughtfully designed as a ZERO CARBON ENERGY SAVING HOME, offering FLEXIBLE LIVING ACCOMMODATION ACROSS THREE FLOORS. Step inside to discover a LUXURIOUS INTERIOR, including a BESPOKE KITCHEN BY PETER CLINCH, complete with PREMIUM NEFF APPLIANCES, perfect for culinary enthusiasts and entertaining alike. The spacious living areas are flooded with natural light, creating a warm and inviting atmosphere throughout. Bedroom 1 features BUILT-IN WARDROBES and a CONTEMPORARY EN-SUITE, while all bathrooms are fitted with ELEGANT VILLEROY & BOCH SANITARYWARE and HANSGROHE TAPWARE, ensuring a sense of sophistication and quality. This remarkable home boasts an impressive PREDICTED A RATED 97 ENERGY ASSESSMENT SCORE, achieved through the integration of SOLAR PV and AIR SOURCE HEAT PUMPS, providing both sustainability and exceptional cost efficiency. Additional highlights include an ELECTRIC VEHICLE CHARGING POINT and two dedicated CARPORT PARKING SPACES, catering to modern lifestyle needs and future-proofing your investment.

For added convenience, the carport provides covered parking for two vehicles. The location is equally impressive, set within a FAMILY-FRIENDLY DEVELOPMENT, with easy access to local amenities, reputable schools and excellent transport links. Whether you are looking for a sustainable family home or a stylish, future-ready investment, this property delivers on every level. Early viewing is highly recommended to fully appreciate the superior quality, innovative features and enviable lifestyle on offer.



- ZERO CARBON ENERGY SAVING HOME
- 4 DOUBLE BEDROOM MID TERRACE HOUSE
- FLEXIBLE LIVING ACCOMODATION OVER 3 FLOORS
- BESPOKE KITCHEN BY PETER CLINCH WITH NEFF

Hall

Stairs to first floor and access to understairs storage

Living Room

14' 4" x 9' 11" (4.36m x 3.02m)

Kitchen/Dining

16' 7" x 13' 3" (5.05m x 4.04m)

Laundry

WC

Landing

Access to airing cupboard

Bedroom 1

11' 11" x 13' 7" (3.64m x 4.14m)

Dimensions extend into wardrobe

En Suite

Bedroom 4 / Study

16' 7" x 10' 4" (5.05m x 3.14m)

Landing

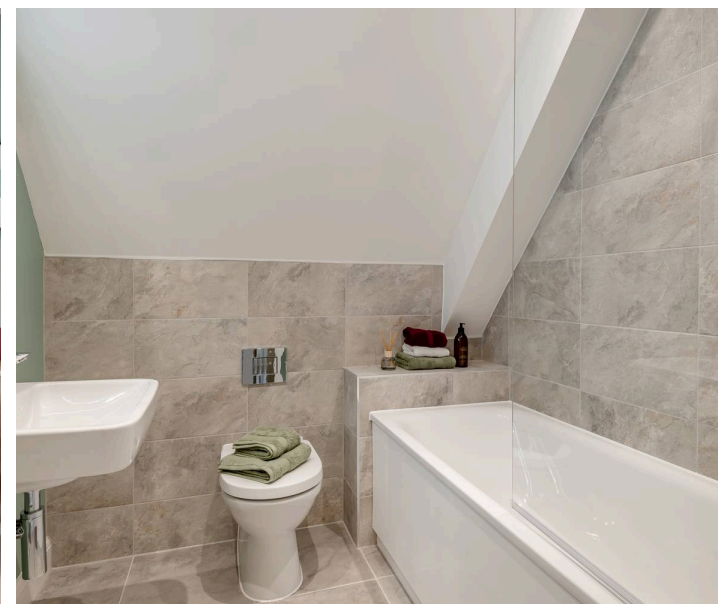
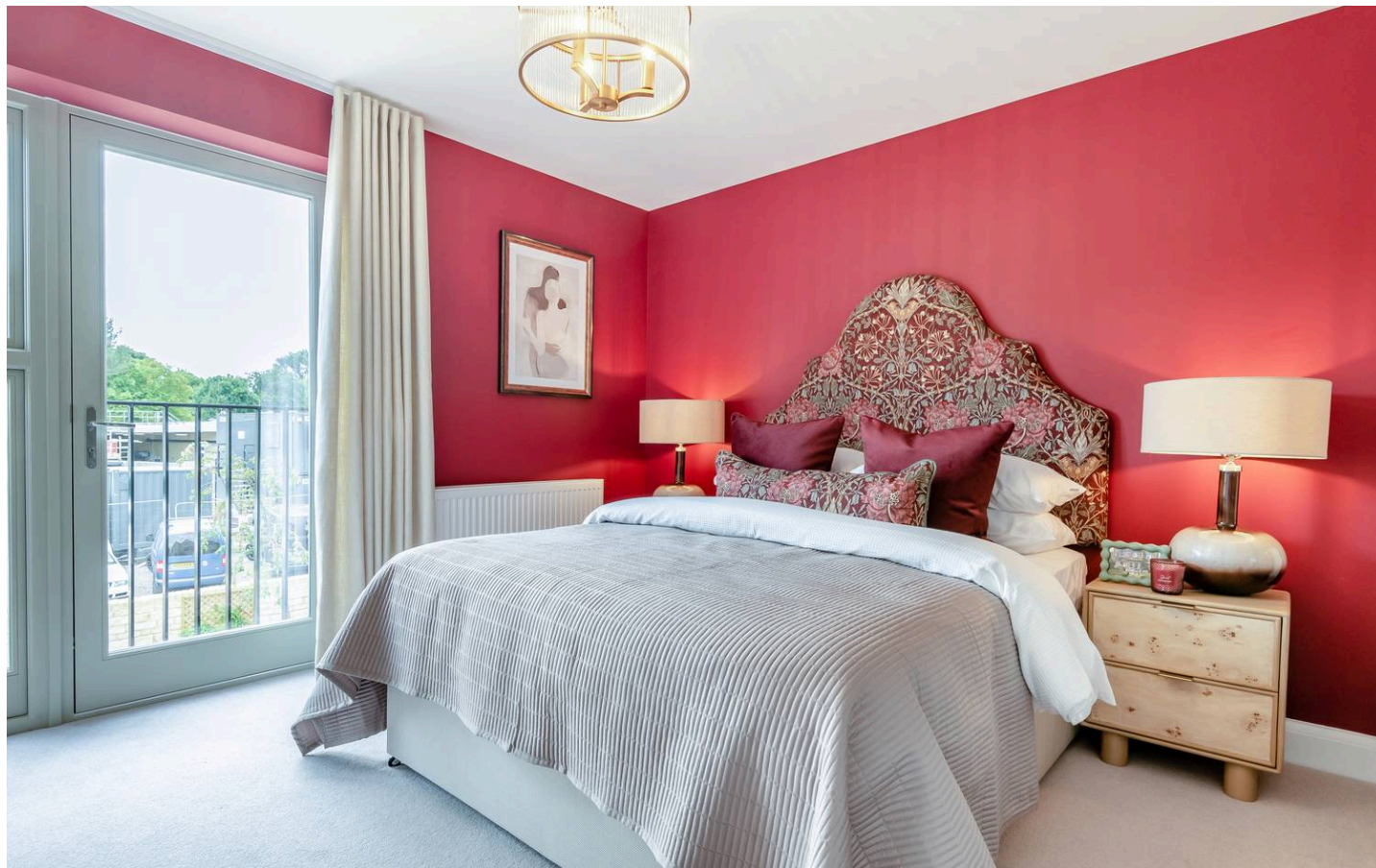
Bedroom 2

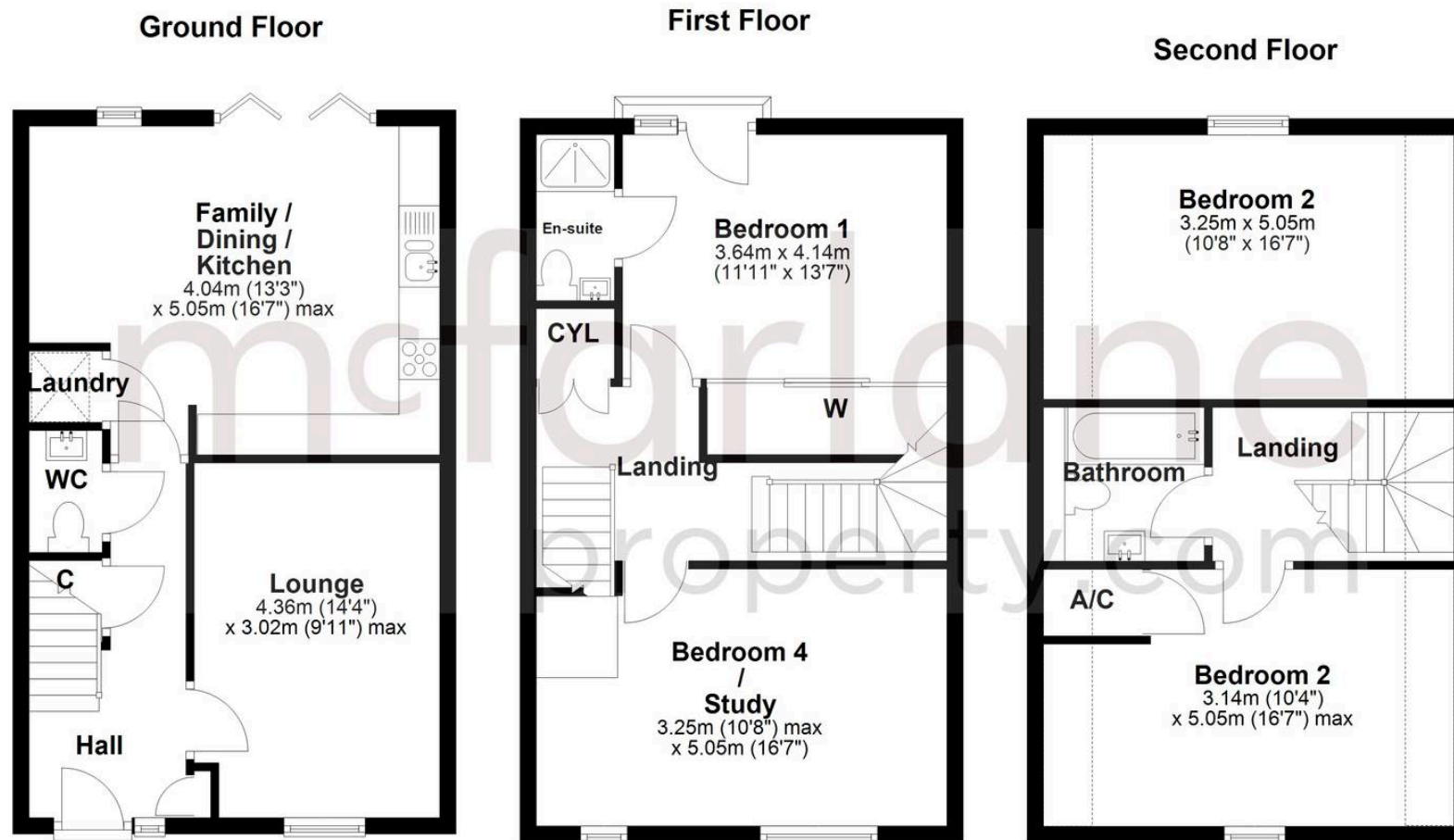
16' 7" x 10' 8" (5.05m x 3.25m)

Bedroom 3

16' 7" x 10' 4" (5.05m x 3.14m)

Bathroom





McFarlane Sales & Lettings

McFarlane Sales & Letting, 106 High Street – SN8 1LT

01672 514380 • marlborough@mcfarlaneproperty.com • www.mcfarlaneproperty.com/