



**FOR
SALE**

Mosaic House, Midland Road

squire | estates

squire | estates

Squire Estates are pleased to offer this spacious, well-presented one-bedroom first-floor apartment. The property features a modern open-plan living, dining and kitchen area, fitted with contemporary units, stylish worktops and integrated appliances, creating a sleek and functional space for everyday living and entertaining.

Large full-length windows run throughout the apartment, flooding the rooms with natural light and enhancing the bright, airy feel. The bedroom offers comfortable accommodation, while the modern bathroom is fully tiled and fitted with a bath with shower over, complemented by grey vanity units providing excellent storage.

Further benefits include an allocated parking space for one vehicle, a convenient location within walking distance of the Town Centre, and excellent transport links. Hemel Hempstead train station is easily accessible, offering direct services to London Euston.

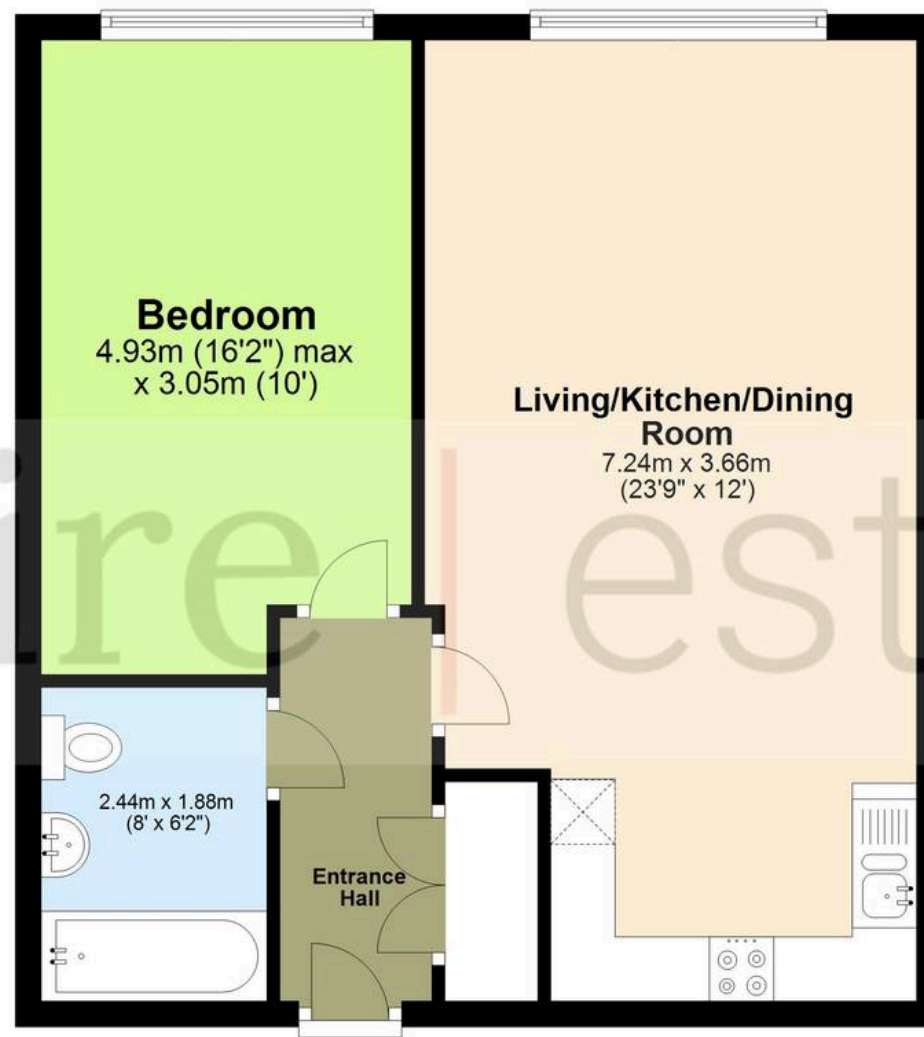
This attractive apartment combines modern living with a highly convenient location, making it an ideal purchase.

- One bedroom apartment
- Town centre location
- Modern kitchen
- Open plan living area
- Parking space for one vehicle



Floor Plan

Approx. 49.9 sq. metres (537.2 sq. feet)

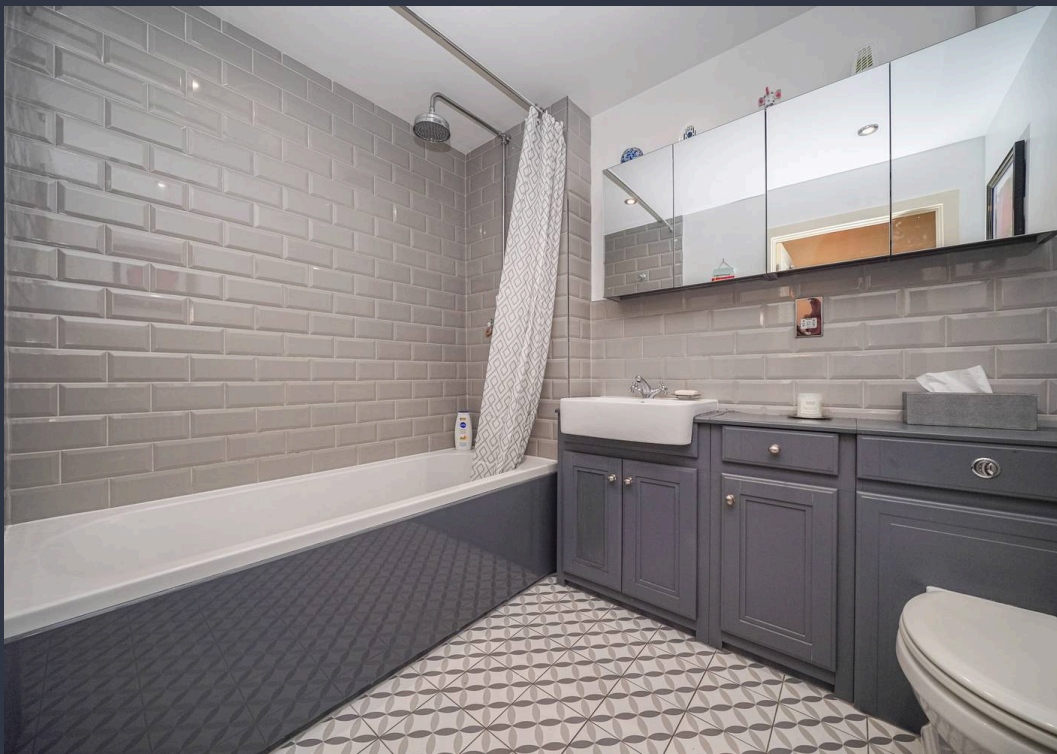


Total area: approx. 49.9 sq. metres (537.2 sq. feet)

The Floor Plan is not to Scale and measurements and areas shown are approximate and therefore should be used for illustrative purposes only. The plan has been prepared with due diligence and whilst we have confidence in the information produced it should not be relied upon. Maximum lengths and widths are represented on the plan. If there are any aspects of particular importance, you should carry out or commission your own inspection of the property. Copyright ©

SKMSTUDIO

Plan produced using PlanUp. □



squire | estates

67 Marlowes, Hemel Hempstead
Hertfordshire HP1 1LE
t. 01442 233533

www.squireestates.co.uk