



72 Mid Street, Kirkcaldy – KY1 2PN

Kirkcaldy

£895 pcm





home sweet home
estate agents
your local property experts



72 Mid Street

Kirkcaldy, Kirkcaldy

New & Available to Let Now a spacious & well-presented Modern 1st Floor Apartment in sought after residential location. Award Winning Home Sweet Home Estate Agents Fife are delighted to present a perfect home comprising Security Entry - Entrance Hall - Lounge/ Diner - Dining Kitchen- Three Bedrooms Master En-Suite - Bathroom/WC. Benefitting from DG- GCH (Newly installed boiler) - EPC C - LRN1794390/250/19122 LARN2103004. Externally residents off street parking bays & bin store to rear. View Now. Restrictions No Pets & No Smokers and long term tenancy ideally.

Council Tax band: A

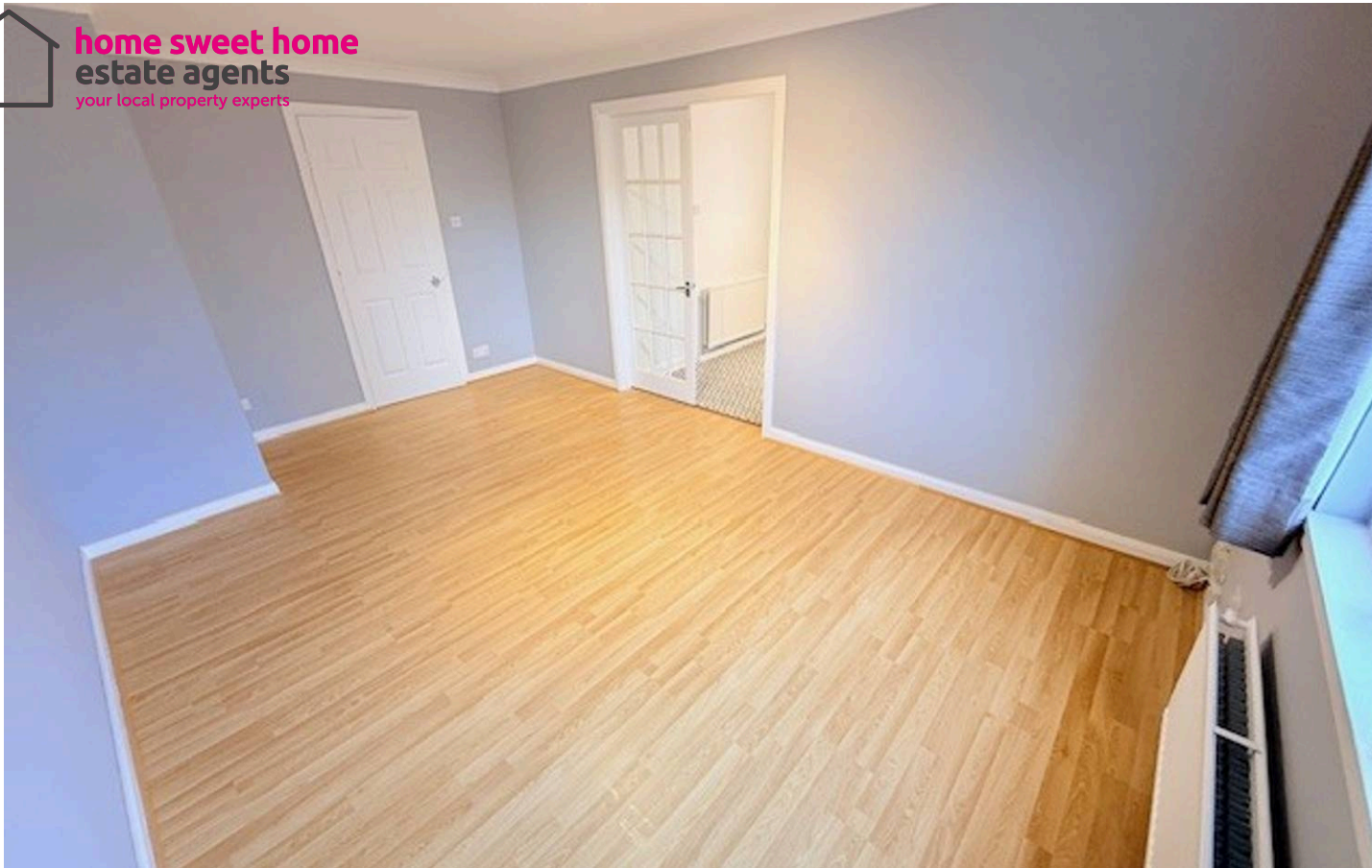
Tenure: Freehold

EPC Energy Efficiency Rating: C

EPC Environmental Impact Rating: B

- SPACIOUS 1ST FLOOR APARTMENT NEW TO LET
- THREE BEDROOMS MASTER EN-SUITE
- LOUNGE/ DINER
- DINING KITCHEN & APPLIANCES
- FAMILY BATHROOM
- RESIDENTS OFF STREET PARKING
- LRN1794390/250/1911 LARN2103004
- SECURE ENTRY - SHARED GARDEN
- AVAILABLE NOW!
- NO PETS - NO SMOKERS - IDEALLY LONG-TERM TENANCY



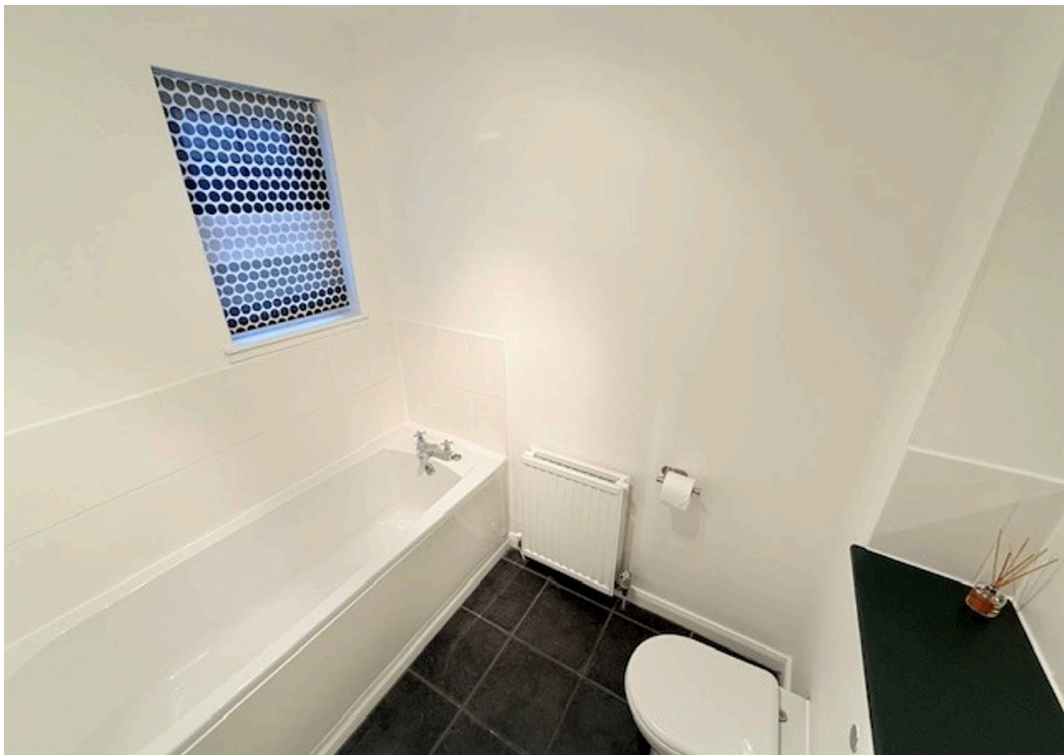


COMMUNAL GARDEN

OFF STREET

2 Parking Spaces





| Energy Efficiency Rating | | | |
|---|---------|-------------------------|--|
| | Current | Potential | |
| Very energy efficient - lower running costs | | | |
| (92+) A | | | |
| (81-91) B | | | |
| (69-80) C | 78 | 80 | |
| (55-68) D | | | |
| (39-54) E | | | |
| (21-38) F | | | |
| (1-20) G | | | |
| Not energy efficient - higher running costs | | | |
| England, Scotland & Wales | | EU Directive 2002/91/EC | |

| Environmental Impact (CO ₂) Rating | | | |
|---|---------|-------------------------|--|
| | Current | Potential | |
| Very environmentally friendly - lower CO ₂ emissions | | | |
| (92+) A | | | |
| (81-91) B | 90 | 89 | |
| (69-80) C | | | |
| (55-68) D | | | |
| (39-54) E | | | |
| (21-38) F | | | |
| (1-20) G | | | |
| Not environmentally friendly - higher CO ₂ emissions | | | |
| England, Scotland & Wales | | EU Directive 2002/91/EC | |



home sweet home
estate agents
your local property experts