



Mile Oak Road, Portslade

East Sussex

Guide Price £525,000 – £550,000



Mile Oak Road

Portslade

Well-positioned in a popular residential area on the border between Portslade and Southwick, an attractive EXTENDED SEMI-DETACHED HOUSE on a CORNER PLOT with FOUR BEDROOMS, good-sized FRONT AND REAR GARDENS, and PRIVATE OFF-STREET PARKING.

Beautifully presented and thoughtfully designed for both everyday living and entertaining, this family home offers spacious and versatile accommodation arranged over three floors. The welcoming living room features a large bay window that floods the space with natural light and overlooks the generous front garden. Plantation shutters add character and charm, while the working fireplace provides a delightful focal point. To the rear, the contemporary kitchen is beautifully finished and offers a wonderful range of integrated appliances. These include a double oven with a combi oven, as well as a dishwasher and fridge/freezer. The kitchen flows seamlessly into the dining room, which opens onto the garden patio through large French doors, creating an ideal space for effortless indoor-outdoor living. A separate study, utility room and additional storage room complete the ground floor.

On the first floor are two double bedrooms, both enjoying large bay windows with plantation shutters, along with a further third well-proportioned bedroom and a stylish family bathroom fitted with a shower over the bath.

The top floor is dedicated to the principal bedroom, which benefits from an en-suite shower room and ample eaves storage.





Outside, the secluded front garden is enclosed by tall hedges, offering a private and peaceful space to relax and entertain. To the rear, a good-sized patio and BBQ area extend from the dining room, providing further space for outdoor dining and socialising. Off-road parking is available at the front of the property.

The Local Area

The property is situated on Mile Oak Road. Local shopping facilities can be found in Southwick Square, with a more comprehensive range of shopping facilities available in Holmbush Shopping Centre and Sainsbury's West Hove Superstore. A regular bus service passes close by, providing access to surrounding areas, and there is a full range of schools and a modern health centre nearby. There is easy access to the A27, and both Southwick and Portslade train stations are conveniently close by.

Further Information

Mile Oak Road is not currently in a parking zone. The current council tax band is C, charged at £2,182.92 for 2025/26.

EPC rating - D

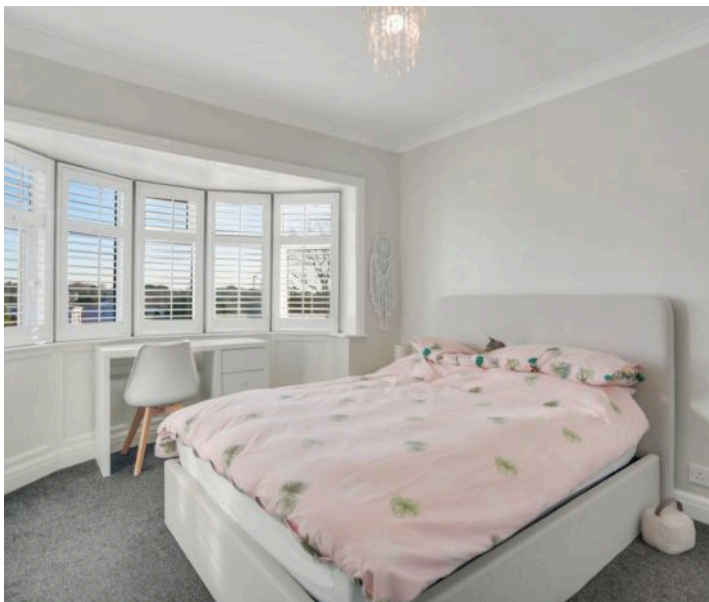
Council Tax - C

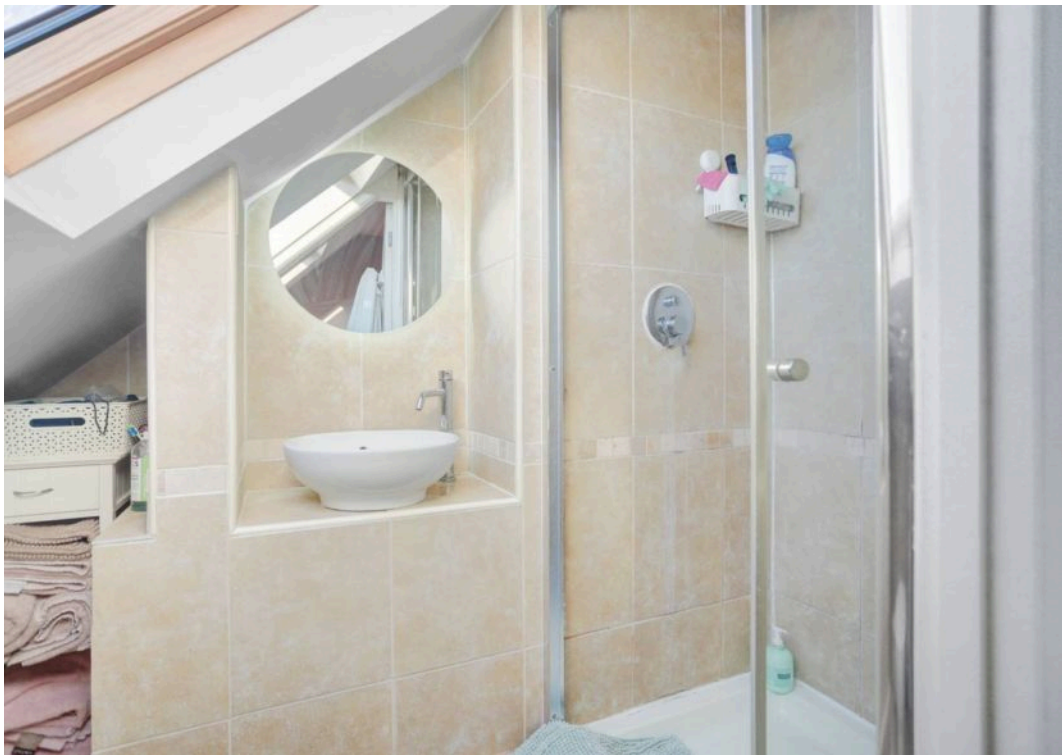
Broadband & Mobile Phone Coverage - Prospective buyers should check the Ofcom Checker website

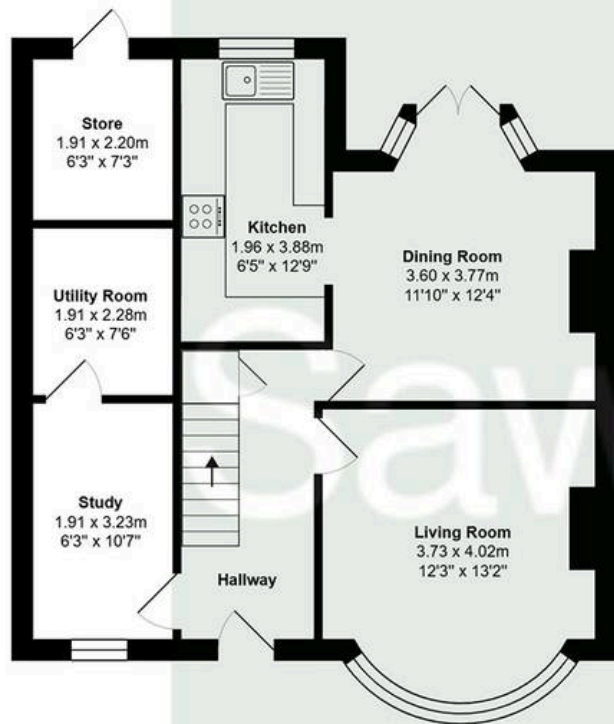
Planning Permissions - Please check the local authority website for any planning permissions that may affect this property or properties close by.

Parking - Not a controlled parking zone.

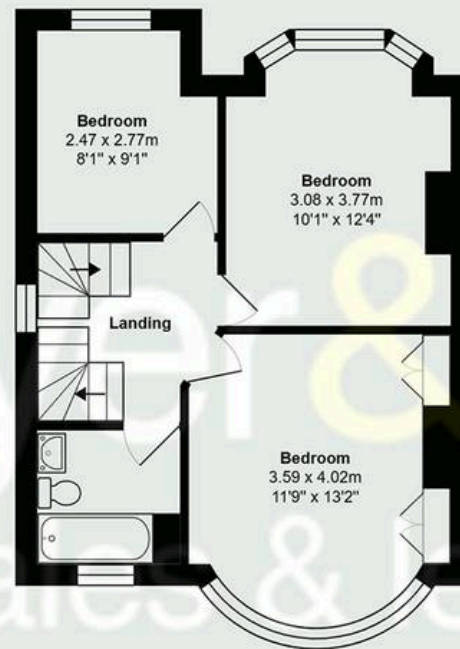
This information has been provided by the seller. Please obtain verification via your legal representative.



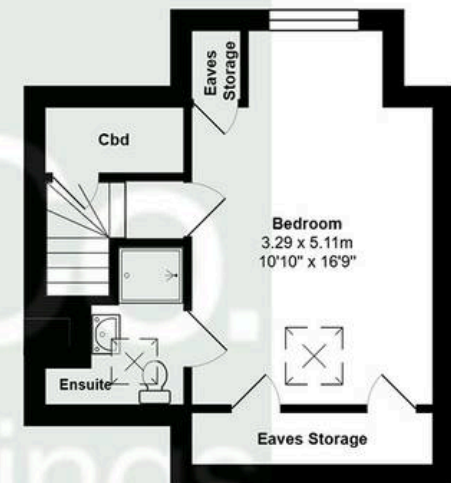




Ground Floor



First Floor



Second Floor

Total Area: 125.5 m² ... 1351 ft²

All measurements are approximate and for display purposes only.



Sawyer & Co- Hove

52 Church Road, Hove, BN3 2FN

01273 778844 • clientservices@sawyerandco.co.uk • www.sawyerandco.co.uk/

We wish to inform prospective purchasers that we have prepared these sales particulars as a general guide. We have not carried out a detailed survey, nor tested the services, appliances and specific fittings. Room sizes are approximate.