



## 15 Ash Street, South Shore

Blackpool, FY4 2JN

- **SPACIOUS 3 BED MID TERRACED HOUSE**
- **POPULAR LOCATION**
- **MOVE IN COSTS £1669\***
- **FITTED KITCHEN**

**£775 pcm**

EPC Rating '65'



15 Ash Street, Blackpool, FY4 2JN



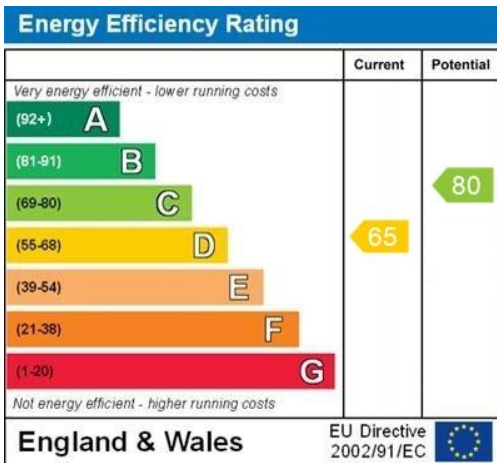
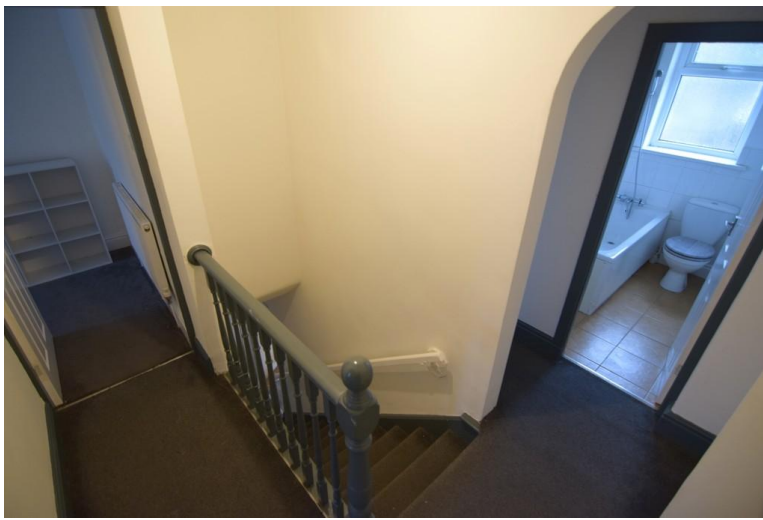
## Property Description

**Spacious three bedroom mid terraced house, situated in a popular location just off Highfield Road close to shops, schools, transport links and other local amenities.**

**Accommodation comprising entrance hallway, lounge, kitchen, three first floor bedrooms and bathroom. Externally with an enclosed rear yard.**

**Viewing recommended.**





WWW.EPC4U.COM

- EPC - D
- PETS - CONSIDERED
- RISK OF FLOODING - NO
- PARKING AVAILABLE - ON STREET
- ACCESS OR MOBILITY LIMITATIONS - NO
- BROADBAND AVAILABLE - NO
- MONTHLY RENT [HOW OFTEN ITS PAID] - £775.00 MONTHLY
- TENANCY LENGTH - 6 MONTHS INITIALLY
- COUNCIL TAX BAND - BAND A
- DEPOSIT AMOUNT - £894.00
- HOLDING DEPOSIT AMOUNT - £178.84
- UTILITIES INCLUDED - NO
- WHO IS RESPONSIBLE FOR PAYING BILLS - TENANT

#### LOUNGE

13' 9" x 12' 2" (4.19m x 3.71m)

#### KITCHEN

15' 9" x 12' 8" (4.8m x 3.86m)

#### BEDROOM 1

10' 9" x 8' 5" (3.28m x 2.57m)

#### BEDROOM 2

13' 9" x 6' 8" (4.19m x 2.03m)

#### BEDROOM 3

9' 6" x 9' 4" (2.9m x 2.84m)

#### BATHROOM

6' 8" x 4' 5" (2.03m x 1.35m)

21 Caunce Street  
Blackpool  
Lancashire  
FY1 3LA

www.moveholmes.co.uk  
01253 928200  
enquiries@moveholmes.co.uk

Agents Note: Whilst every care has been taken to prepare these sales particulars, they are for guidance purposes only. All measurements are approximate are for general guidance purposes only and whilst every care has been taken to ensure their accuracy, they should not be relied upon and potential buyers are advised to recheck the measurements