



15 The Palms, La Rue Voisin, St. Brelade  
£435,000

**BROADLANDS**

FINDING YOU A HOME SINCE 1972



## 15 The Palms, La Rue Voisin

St. Brelade, Jersey

From Woodbine Stores head towards Portelet. Turn right towards Ouaisne and when the road forks take left turn. Turn left into Rue Voisin and The Palms is located on the right hand side.

- Fantastic location at The Palms
- Ground floor, garden apartment
- Plenty of options for headland and beach walks
- Vacant possession, no onward chain
- Designated parking for one car
- Ample visitor parking
- Contact James on 07829 835076 or [james@broadlandsjersey.com](mailto:james@broadlandsjersey.com)
- West facing patio / garden



## 15 The Palms, La Rue Voisin

St. Brelade, Jersey

Desirable purpose built one bedroom apartment with serious emphasis on space throughout. With a location second to none this immaculate ground floor garden apartment has it all; spacious living room opening on to the west facing patio, perfect for sunsets and the ideal spot for entertaining alfresco style! Large eat-in kitchen diner with fully fitted contemporary design. Larger than average double bedroom with full length fitted wardrobes. Designated parking space & ample visitor spaces.

Very quiet yet popular location near to Quaisne and Portelet with amazing headland walks right on your door step. This one is not to be missed!







### **Living**

Great size lounge with sliding doors to west facing patio. Archway to modern fully fitted kitchen with plenty of space for a dining table.

### **Sleeping**

Bright generous size double bedroom with fitted wardrobe and room for work station / desk. Fully tiled bathroom.

### **Outside**

Large west facing patio and lawned garden overlooking fields. Designated parking for 1 car plus ample visitors spaces.

### **Services**

All mains (excluding gas). Fully double glazed. Modern electric heating Service charge - £134 per month. Includes building insurance, cleaning of communal areas & lighting, gardening, sinking fund, water rates.

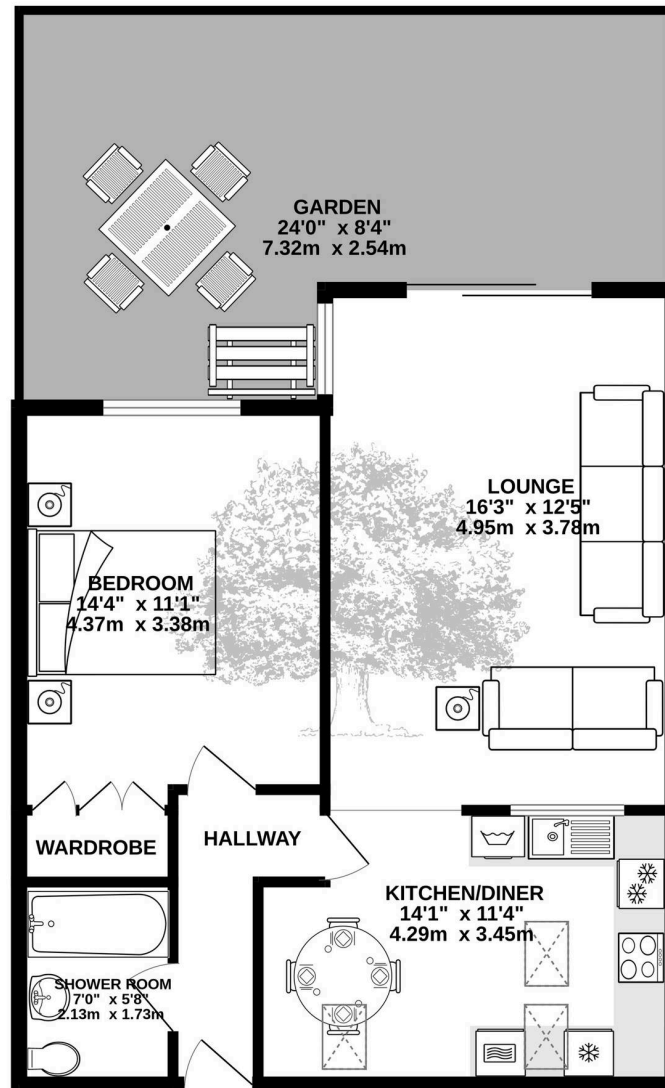








GROUND FLOOR  
607 sq.ft. (56.4 sq.m.) approx.



TOTAL FLOOR AREA : 607 sq.ft. (56.4 sq.m.) approx.

Whilst every attempt has been made to ensure the accuracy of the floorplan contained here, measurements of doors, windows, rooms and any other items are approximate and no responsibility is taken for any error, omission or mis-statement. This plan is for illustrative purposes only and should be used as such by any prospective purchaser. The services, systems and appliances shown have not been tested and no guarantee as to their operability or efficiency can be given.  
Made with Metropix ©2023





## Broadlands

Broadlands Estates, Library Place - JE2 3NL

01534 880770 • [enquiries@broadlandsjersey.com](mailto:enquiries@broadlandsjersey.com) • [www.broadlandsjersey.com/](http://www.broadlandsjersey.com/)

# BROADLANDS

FINDING YOU A HOME SINCE 1972