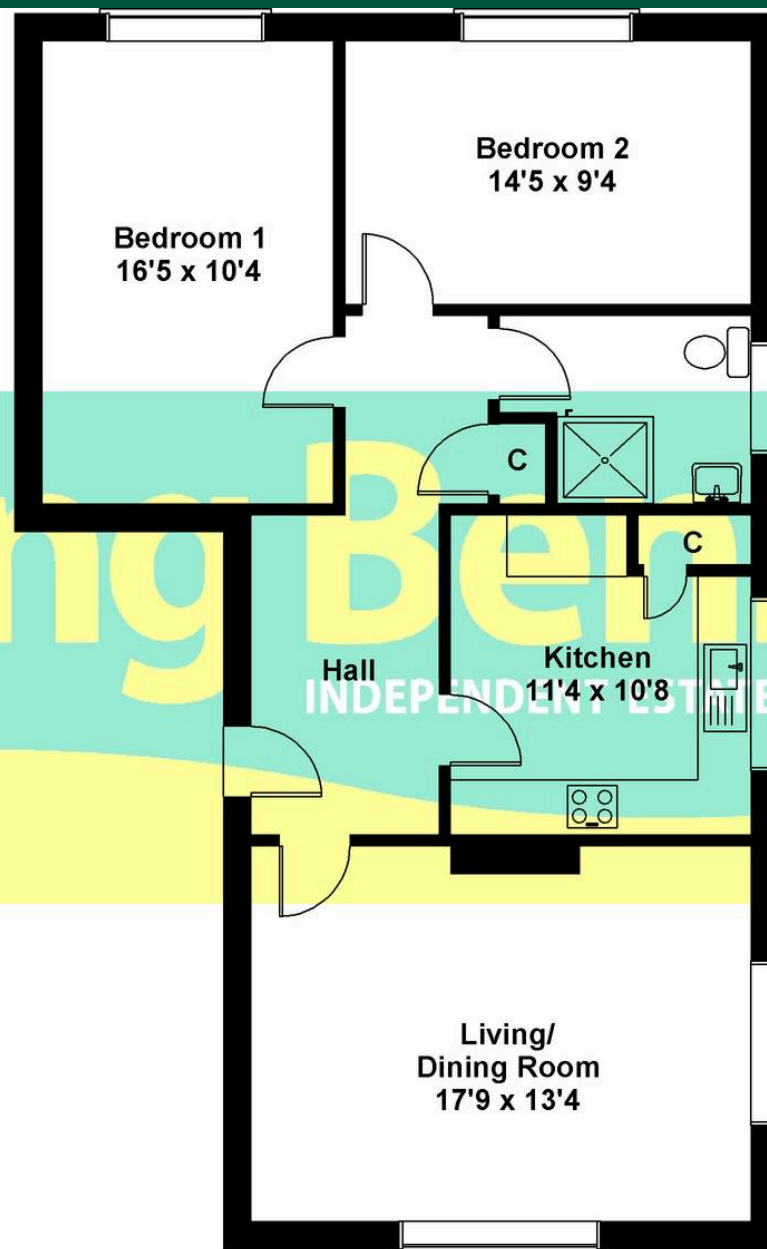




Flat 3, Harvey Court, 8 Cherry Garden Avenue - CT19 5LB

Guide Price **£195,000**

Laing Berrinett
INDEPENDENT ESTATE & LETTING AGENTS



SKETCH PLAN FOR ILLUSTRATIVE PURPOSES ONLY

All measurements walls, doors, windows, fittings and appliances, their sizes and locations, are approximate only. They cannot be regarded as being a representation by the seller, nor their agent.

Produced by Potterplans Ltd. 2017



Flat 3

Harvey Court, Folkestone

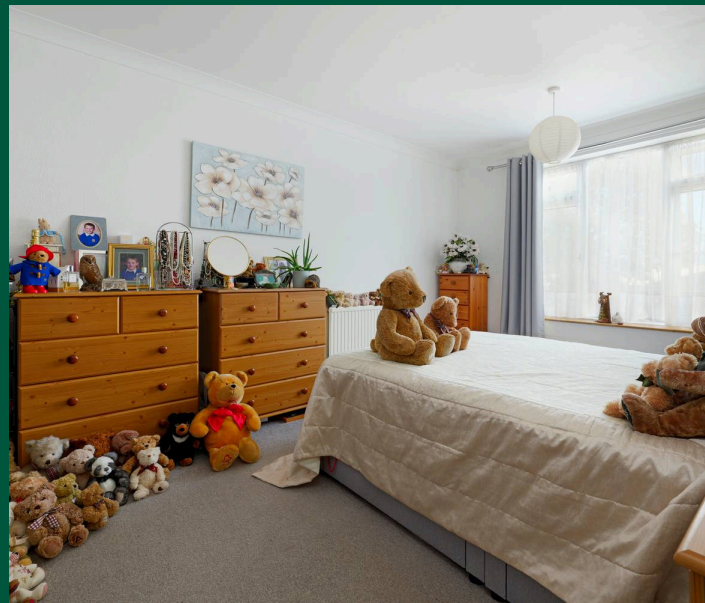
A spacious and well-presented first-floor apartment featuring two double bedrooms, conveniently located close to Folkestone West train station. The property has been well maintained throughout and benefits from gas central heating, double glazing, and an en bloc garage. No forward chain.

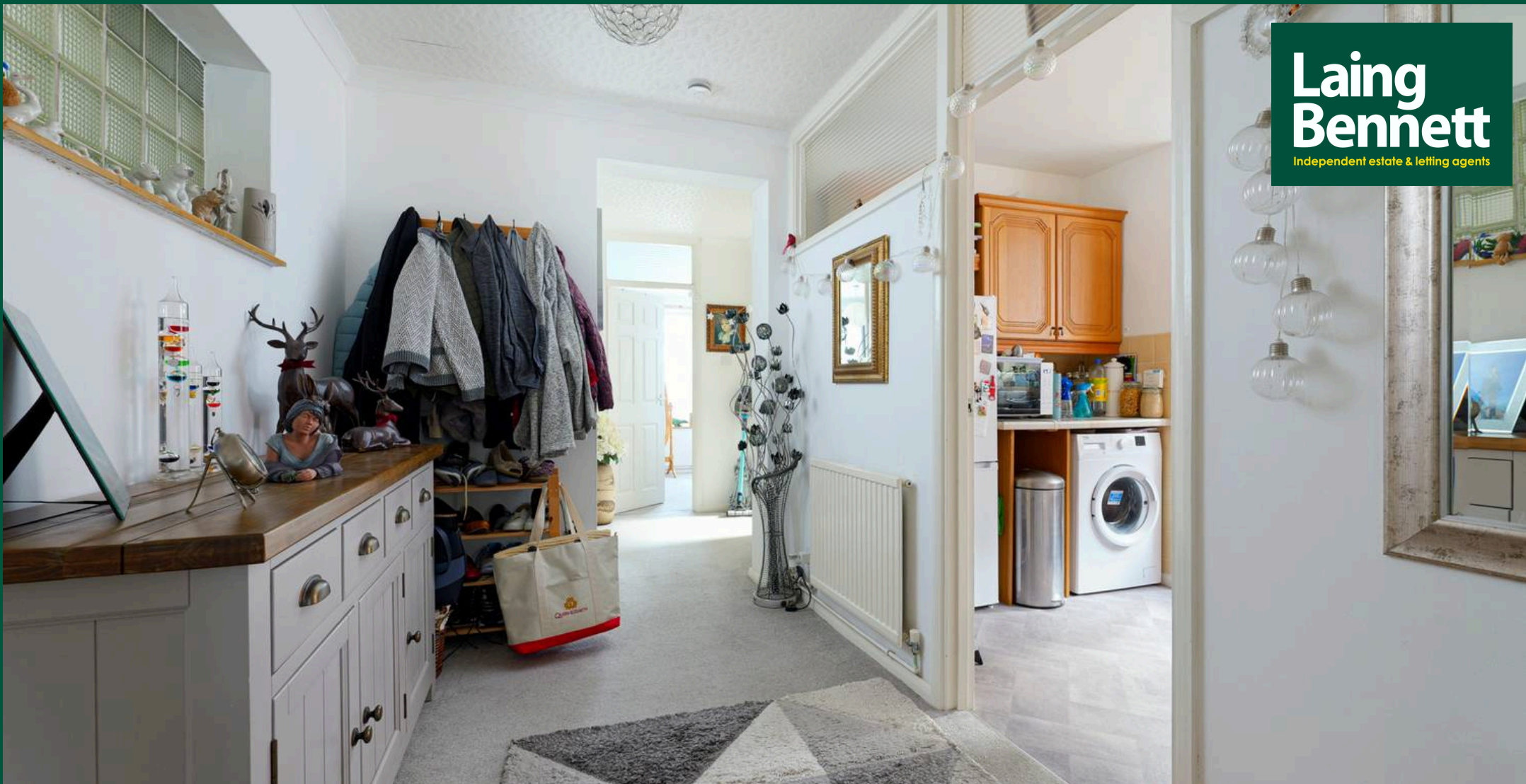
Council Tax band: D

Tenure: Leasehold

EPC Energy Efficiency Rating: C

EPC Environmental Impact Rating: C





**Laing
Bennett**
Independent estate & letting agents

Laing Bennett

Laing Bennett Ltd, The Estate Office, 8 Station Road – CT18 8HP

01303 863393

info@laingbennett.co.uk

www.laingbennett.co.uk/

DISCLAIMER – These details are for guidance only and do not form part of an offer or contract. Measurements are approximate. Laing Bennett Ltd and the Vendor/Landlord accept no liability. Services and appliances are untested. Applicants must make their own checks. Items shown may not be included. No staff have authority to give warranties.