



5 James Close, Lyminge - CT18 8NL

Guide Price **£620,000**

Approximate Gross Internal Area (Including Low Ceiling) = 147 sq m / 1581 sq ft
Garage = 14 sq m / 156 sq ft

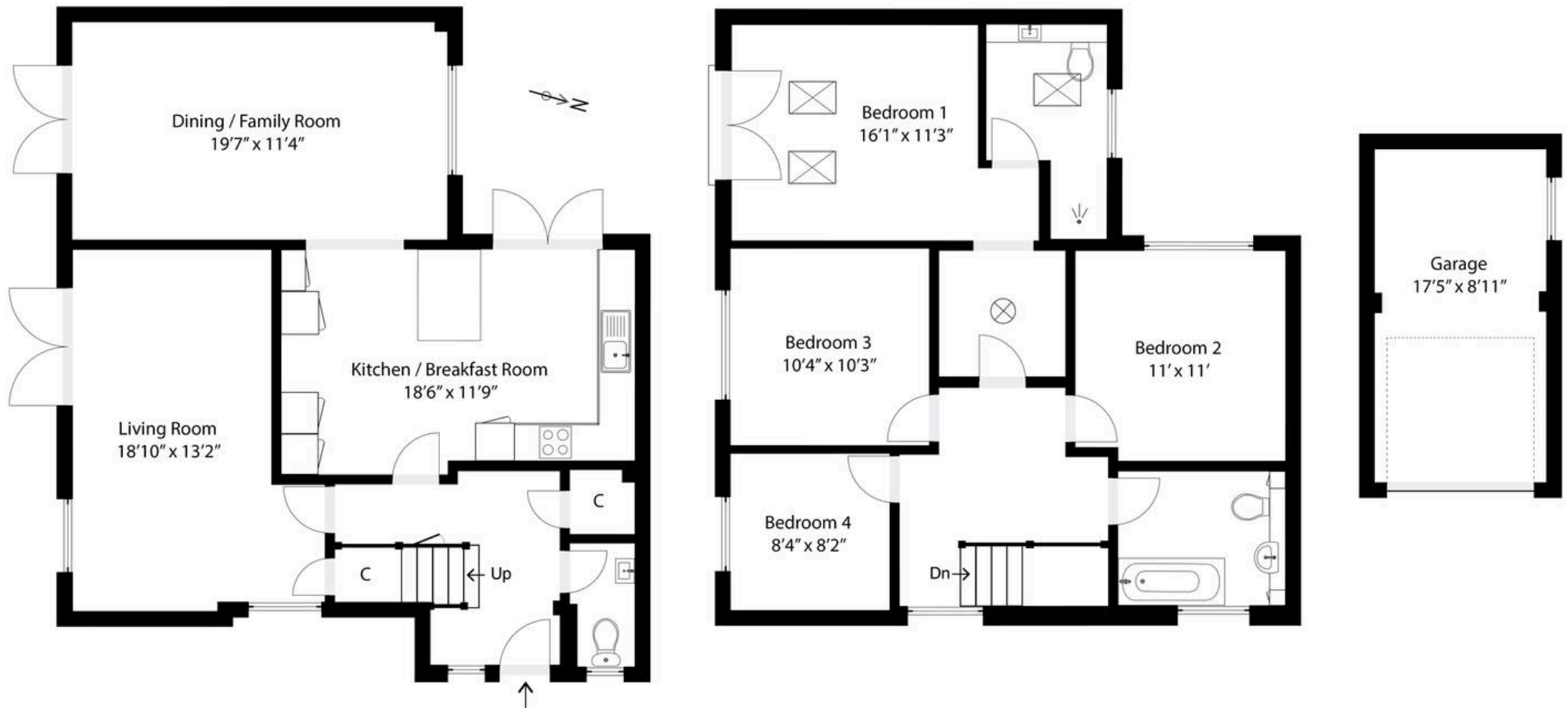


Illustration for identification purposes only. Measurements are approximate. Dimensions given are between the widest points.
Not to scale. Outbuildings are not shown in actual location.



5 James Close

Lyminge, Folkestone

Price Range From £620,000 to £640,000. This beautifully presented and impressively extended four bedroom home, has been beautifully refurbished with exceptional attention to detail. Upon entry, you're greeted by a striking American oak staircase which rises to a spacious, bright landing. The first floor offers three large double bedrooms, a family bathroom/WC, and an additional room that can function as a fourth bedroom or office. The main bedroom is a tranquil retreat, featuring a spacious walk-in wardrobe and delightful garden views through elegant French doors. Its modern en suite bathroom has a WC, walk-in shower and premium fittings. On the ground floor, the property features a cloakroom/WC and three expansive reception rooms, each with modern French doors opening onto the garden which is divided into two sections of a patio area adjacent to the kitchen and a large, south-facing garden. This outdoor space, is ideal for both entertaining and relaxation. The garage is accessed over a driveway providing off road parking. Conveniently located near a popular primary school and within walking distance to local amenities, this property offers both luxury and practicality for modern living.

Council Tax band: E

Tenure: Freehold

EPC Energy Efficiency Rating: C

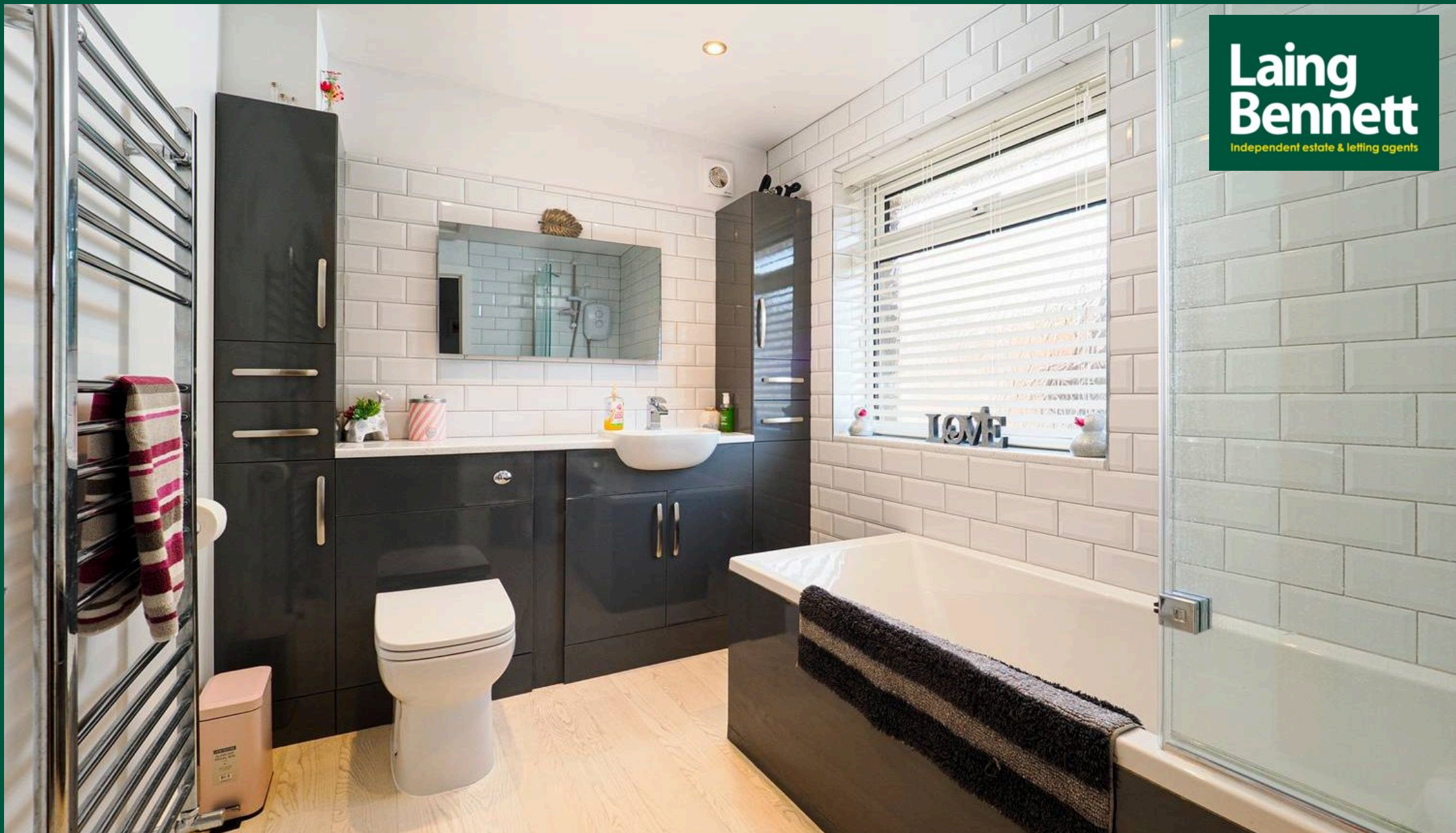
EPC Environmental Impact Rating: C











Laing Bennett

Laing Bennett Ltd, The Estate Office, 8 Station Road – CT18 8HP

01303 863393 • info@laingbennett.co.uk • www.laingbennett.co.uk/

DISCLAIMER – These details are for guidance only and do not form part of an offer or contract. Measurements are approximate. Laing Bennett Ltd and the Vendor/Landlord accept no liability. Services and appliances are untested. Applicants must make their own checks. Items shown may not be included. No staff have authority to give warranties.