



11a North Road, Hythe - CT21 5DS

Guide Price **£425,000**

Approximate Gross Internal Area (Excluding Garage) = 85 sq m / 919 sq ft
Garage = 8 sq m / 88 sq ft

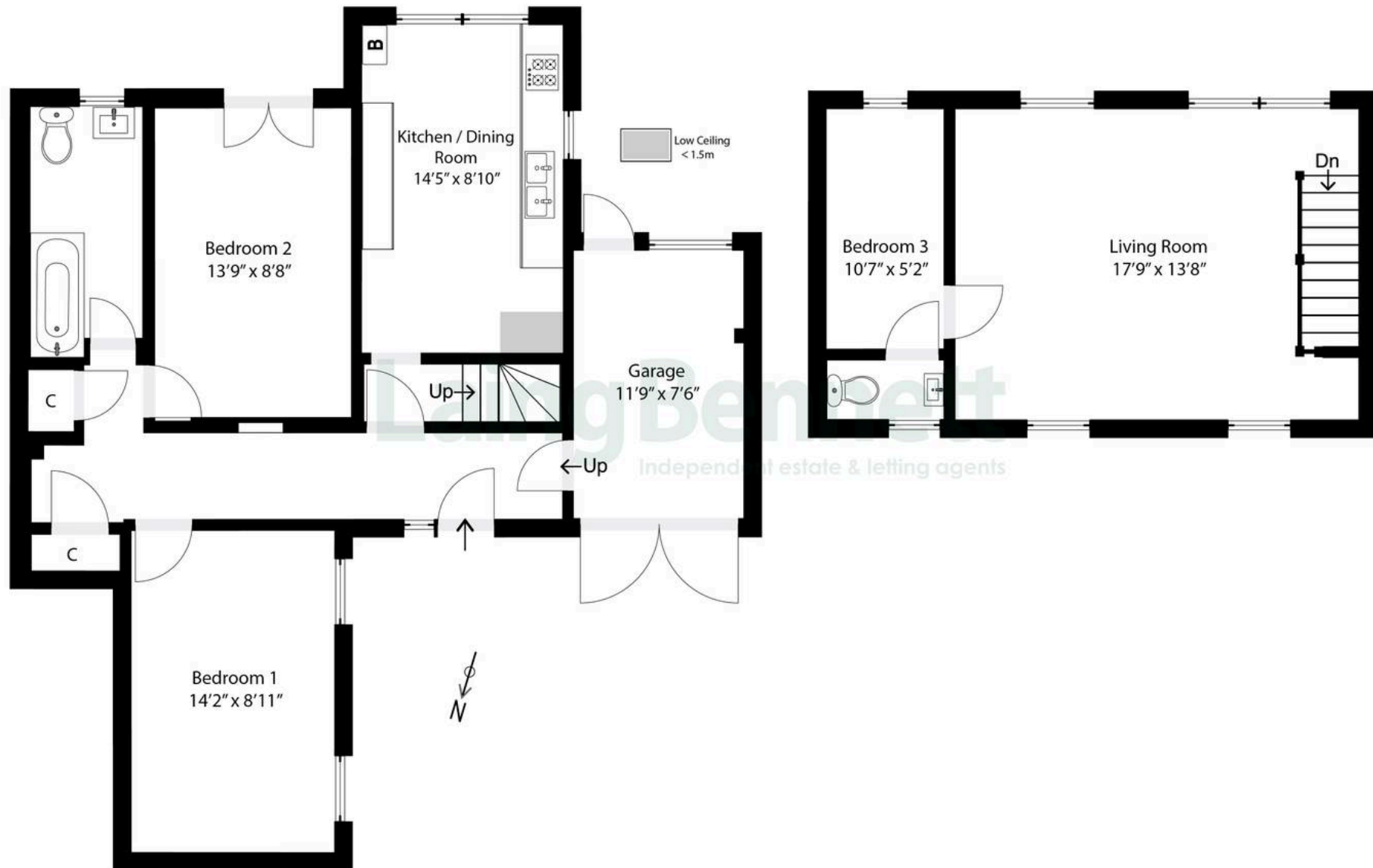


Illustration for Identification purposes only. Measurements are approximate. Dimensions given are between the widest points.
Not to scale. Outbuildings are not shown in actual location.
© Unauthorised reproduction prohibited - chriskemps@hotmail.com



11a North Road

Hythe, Hythe

Enjoying an elevated position with far-reaching sea views over Hythe, this unique and charming 2/3 bedroom upside-down house is perfectly designed to make the most of its coastal outlook. The thoughtfully arranged accommodation comprises on the ground floor: a spacious kitchen/breakfast room, two double bedrooms, a modern bathroom, and a useful utility/storage room. Upstairs, the first floor opens into a bright and airy sitting/dining room, where large windows frame captivating sea views across the town and coastline. Third single bedroom with en suite WC. Externally, the property benefits from a driveway to the front, garage and a private courtyard garden to the rear, offering a low-maintenance outdoor space to relax and unwind. A wonderful opportunity for those seeking a home with character, views, and a desirable location within easy reach of Hythe's vibrant town centre, seafront, and transport links. No forward chain.

Council Tax band: D

Tenure: Freehold

EPC Energy Efficiency Rating: D

EPC Environmental Impact Rating: E



Laing Bennett

Laing Bennett Ltd, The Estate Office, 8 Station Road – CT18 8HP

01303 863393

info@laingbennett.co.uk

www.laingbennett.co.uk/

DISCLAIMER – These details are for guidance only and do not form part of an offer or contract. Measurements are approximate. Laing Bennett Ltd and the Vendor/Landlord accept no liability. Services and appliances are untested. Applicants must make their own checks. Items shown may not be included. No staff have authority to give warranties.