



Flat 1, Goatman's Yard High Street, Elham - CT4 6TD

Guide Price £219,995

Approximate Gross Internal Area (Including Low Ceiling) = 85 sq m / 919 sq ft

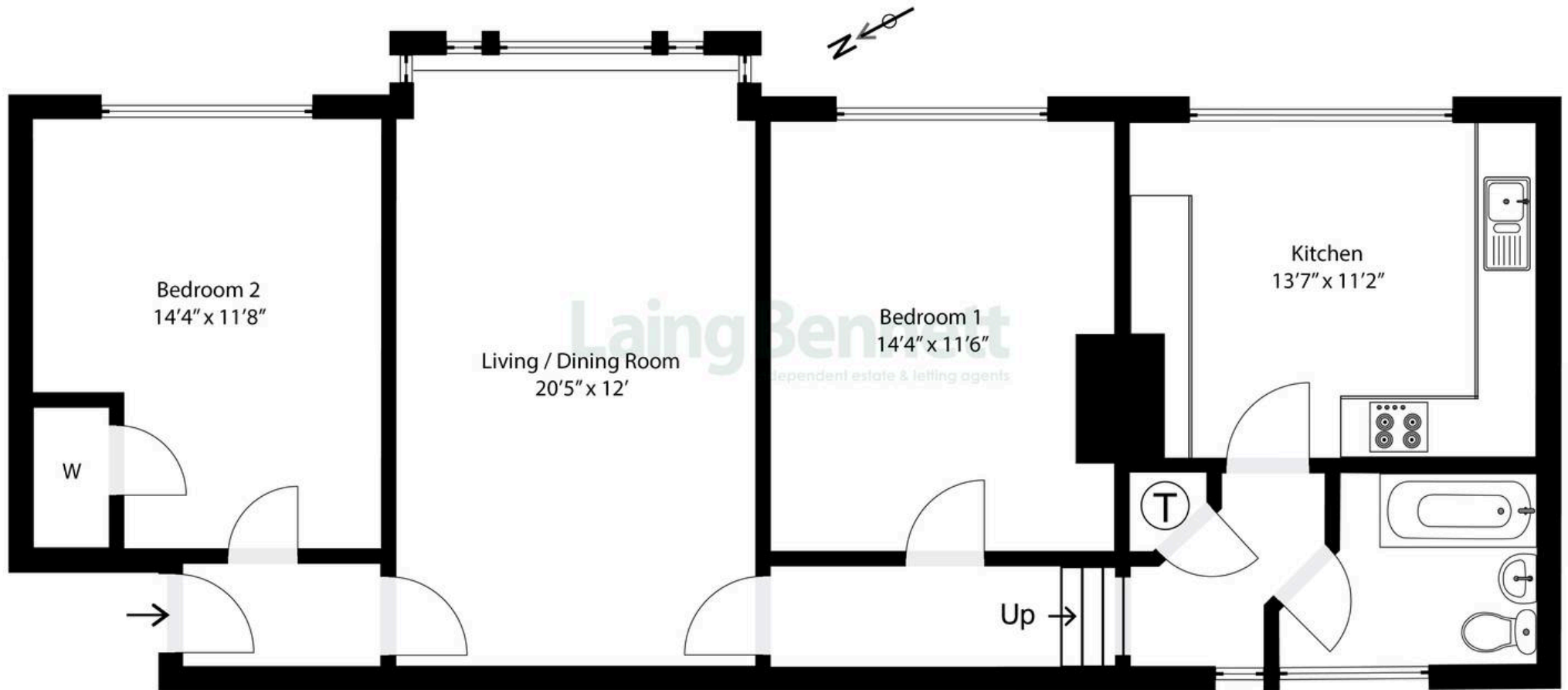


Illustration for Identification purposes only. Measurements are approximate. Dimensions given are between the widest points.
Not to scale. Outbuildings are not shown in actual location.



Flat 1

Goatman's Yard High Street, Canterbury

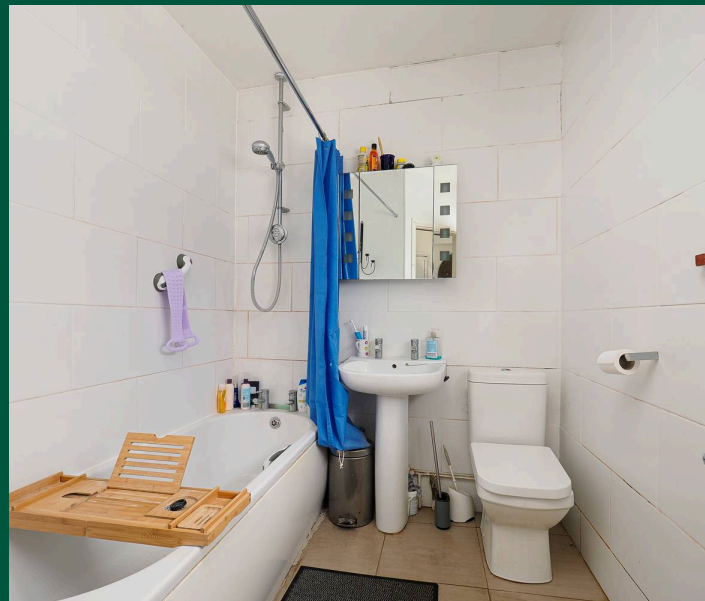
A superb opportunity to purchase a truly light and spacious two double bedroom first floor apartment in the heart of the picturesque and sought after village of Elham. The property enjoys wonderful views over the village and rolling countryside beyond. An internal viewing of this exceptional home comes highly recommended to appreciate the charm and space on offer. On street parking. NO CHAIN.

Council Tax band: A

Tenure: Leasehold

EPC Energy Efficiency Rating: F

EPC Environmental Impact Rating: F





Laing Bennett

Laing Bennett Ltd, The Estate Office, 8 Station Road – CT18 8HP

01303 863393

info@laingbennett.co.uk

www.laingbennett.co.uk/

DISCLAIMER – These details are for guidance only and do not form part of an offer or contract. Measurements are approximate. Laing Bennett Ltd and the Vendor/Landlord accept no liability. Services and appliances are untested. Applicants must make their own checks. Items shown may not be included. No staff have authority to give warranties.