



Weekday Cross Building, Pilcher Gate
£995 pcm

Weekday Cross Building

Nottingham

Comfort Estates are pleased to market this well-presented two-bedroom apartment, ideally located in the heart of Nottingham City Centre.

The property benefits from an abundance of nearby amenities including shops, cafés, restaurants, and bars, and is just a short walk from the train station, tram stops, and multiple bus routes providing excellent transport links in and out of the city.

The accommodation briefly comprises an entrance hallway, two double bedrooms, a bathroom, and a spacious open-plan lounge, kitchen, and dining area. The property also benefits from an allocated underground parking space.

Offered fully furnished, the apartment includes integrated kitchen appliances and electric heaters fitted throughout.

Available from the 19th January 2026 – call today to arrange a viewing.





Living/dining area

18' 1" x 8' 0" (5.51m x 2.43m)

There is a spacious and bright open plan living area neutrally decorated with white walls and brown carpet. Furnishings include a two seater sofa, armchair, coffee table and dining table with 4 chairs.

Kitchen

14' 0" x 8' 8" (4.26m x 2.63m)

The kitchen area is a range of beech effect units with black worktops and vinyl flooring. There are integrated appliances including a large fridge/freezer, dishwasher and washer/dryer. There is a electric oven/hob with extractor hood overhead.

Bedroom 1

10' 9" x 8' 1" (3.27m x 2.47m)

The first double bedroom is neutrally decorated with white walls and brown carpet. Featuring a large built in wardrobe, double bed with mattress and bedside table.

Bedroom 2

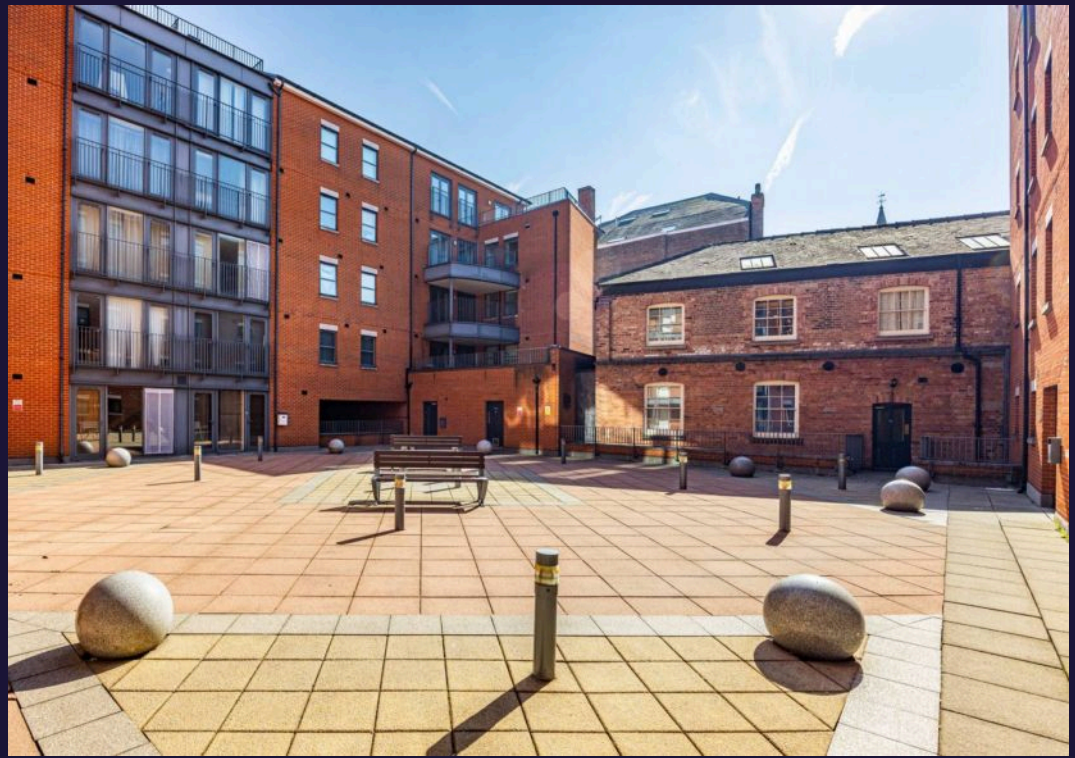
10' 11" x 8' 1" (3.32m x 2.47m)

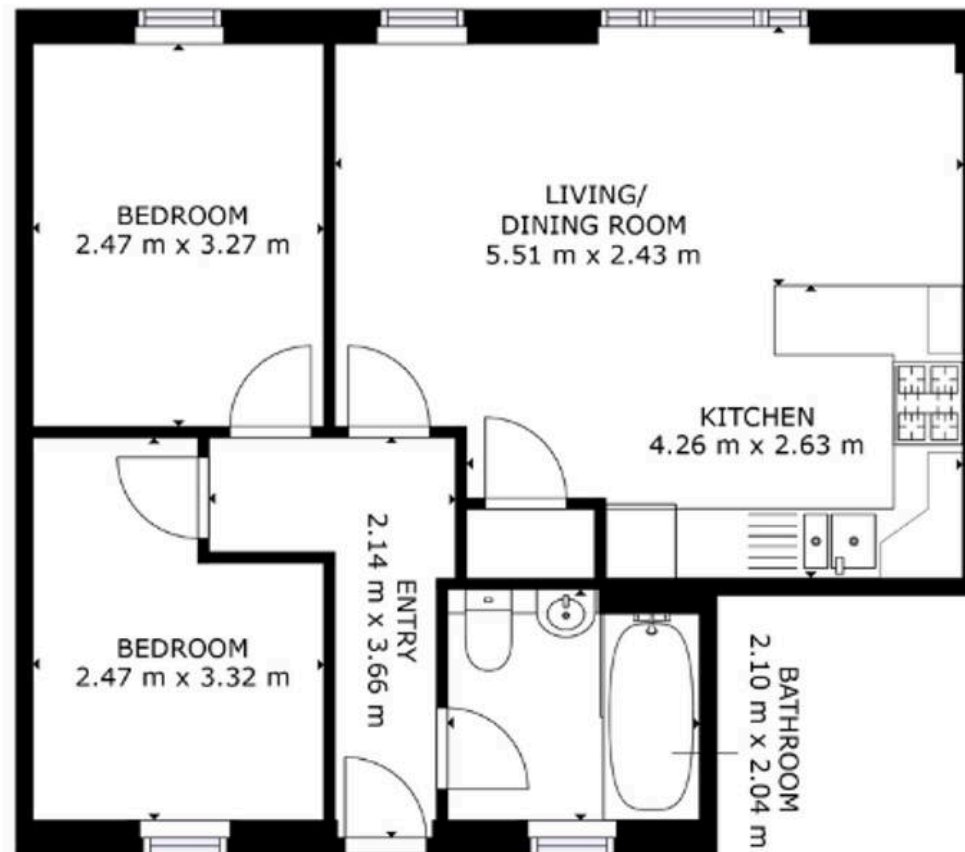
A second well proportioned double bedroom overlooking the communal courtyard. Neutrally decorated with white walls and brown carpet, the room is furnished with a double bed, mattress and wardrobe.

Bathroom

6' 7" x 6' 7" (2.01m x 2.00m)

A good sized main bathroom featuring a bath with shower over and glass partition, WC and wash basin with mirror over. The rooms is mostly tiled throughout with some painted white walls and vinyl tiled flooring.





FLOOR 1

GROSS INTERNAL AREA
TOTAL: 51 m²
SIZES AND DIMENSIONS ARE APPROXIMATE, ACTUAL MAY VARY.



Comfort Estates

Comfort Estates, 47 Derby Road - NG1 5AW

0115 9338997 • info@comfortestates.co.uk • www.comfortestates.co.uk