



**31 Fore Street, Noak Bridge – SS15 4JP**

**£500,000 Freehold**

Council Tax band: D

Tenure: Freehold

EPC Energy Efficiency Rating: C

EPC Environmental Impact Rating: C



**tyler estates**

01277 626181

[www.tylerestates.co.uk](http://www.tylerestates.co.uk)





Entrance Hall

Lounge

15' 1" x 10' 2" (4.60m x 3.10m)

Playroom/Reception

11' 2" x 9' 10" (3.40m x 3.00m)

Kitchen

10' 10" x 8' 2" (3.30m x 2.50m)

Dining Room

12' 2" x 10' 6" (3.70m x 3.20m)

Cloakroom

Bedroom One

17' 9" x 10' 5" (5.40m x 3.17m)

Bedroom Two

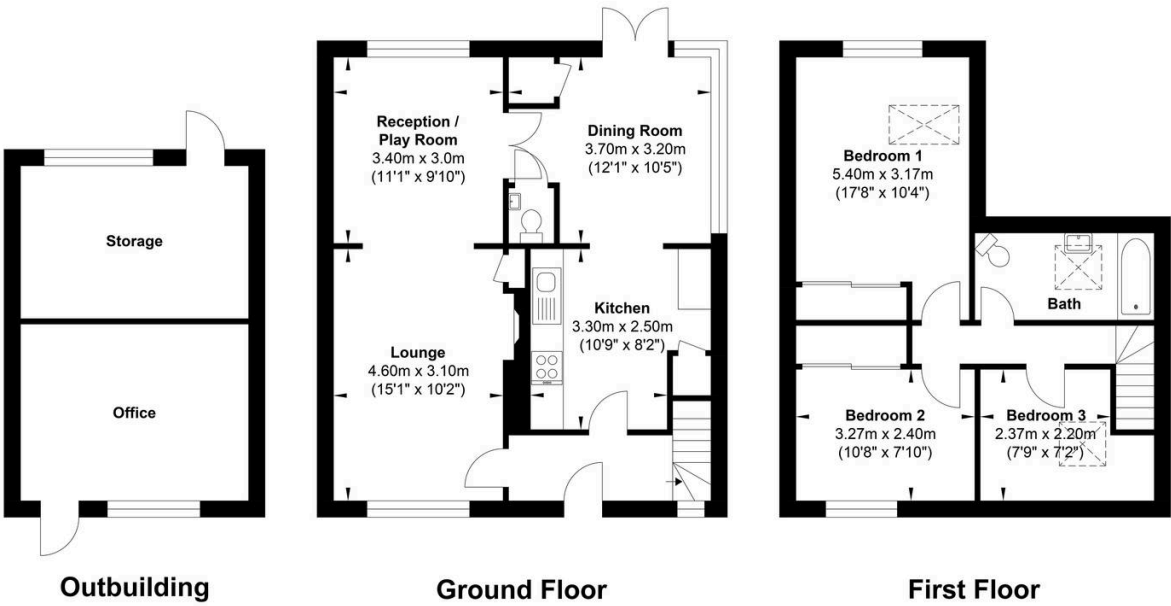
7' 10" x 10' 9" (2.40m x 3.27m)

Bedroom Three

7' 9" x 7' 3" (2.37m x 2.20m)

Bathroom

Office



Gross Internal Floor Area : 98.10 m2 ... 1055.94 ft2

Whilst every attempt has been made to ensure the accuracy of the floor plan contained here, measurements of doors, windows, rooms and any other items are approximate and no responsibility is taken for any error, omission, or mis-statement. This plan is for illustrative purposes only and should be used as such by any prospective purchaser. The services, systems and appliances shown have not been tested and no guarantee as to their operability or efficiency can be given.