



Mark Antony
SALES & LETTING AGENTS

To LET

Bridgewater Mews London Road, Stockton Heath Unfurnished

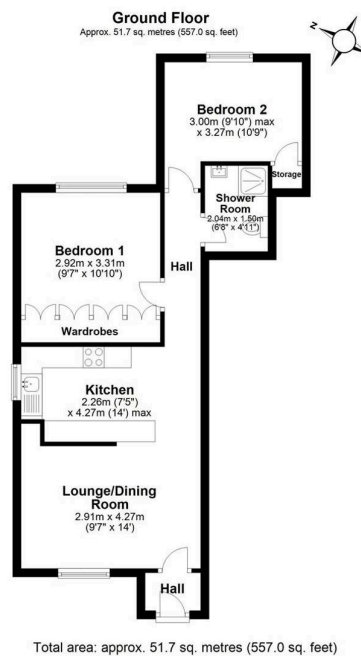


PROPERTY DESCRIPTION

This charming ground floor apartment sits in the vibrant heart of Stockton Heath. Step inside to a stylish open-plan lounge and kitchen, perfect for relaxing or entertaining. The master bedroom offers generous built-in storage, while the second double bedroom provides ideal space for guests or a home office. A contemporary shower room creates a calming retreat, and allocated parking removes any stress. With restaurants and amenities just moments away, everything you need is right on your doorstep.

PROPERTY FEATURES

- Two Bedroom Apartment
- Open Plan Living
- Heart Of Stockton Heath
- Ground Floor
- Modern Throughout
- Double Bedrooms
- Walking Distance to Amenities
- Village Location
- Master Bedroom Offers Generous Storage
- Allocated Parking



NOTES TO PROSPECTIVE TENANTS

Oven, hob and extractor fan

Fridge/freezer on none repairable none replacable

One allocated parking space to the rear

No pets

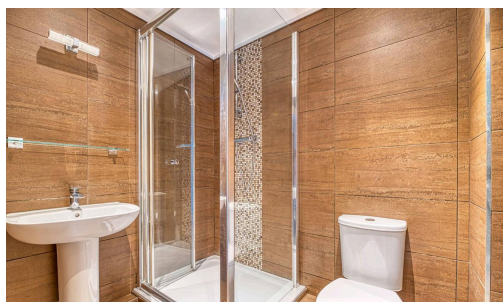
GENERAL INFORMATION

Council Tax band: C

EPC Energy Efficiency Rating: C

RENTAL AVAILAVLE FROM

17th February 2026



£50 FOR YOU! *and they sign up fully managed with us.

if you refer a
Warrington landlord*

MA
Mark Antony

Note: These details have been prepared as a general guide only and do not constitute any part of any contract. The function of any appliances, services, sockets or cables are not guaranteed. Any interested party should satisfy themselves about any matter of importance to them and not rely on the contents of these particulars when making the decision to offer.

SCAN ME!

safeagent **The Property Ombudsman**