



Fordwych Road, London, NW2.
£2,800 PCM

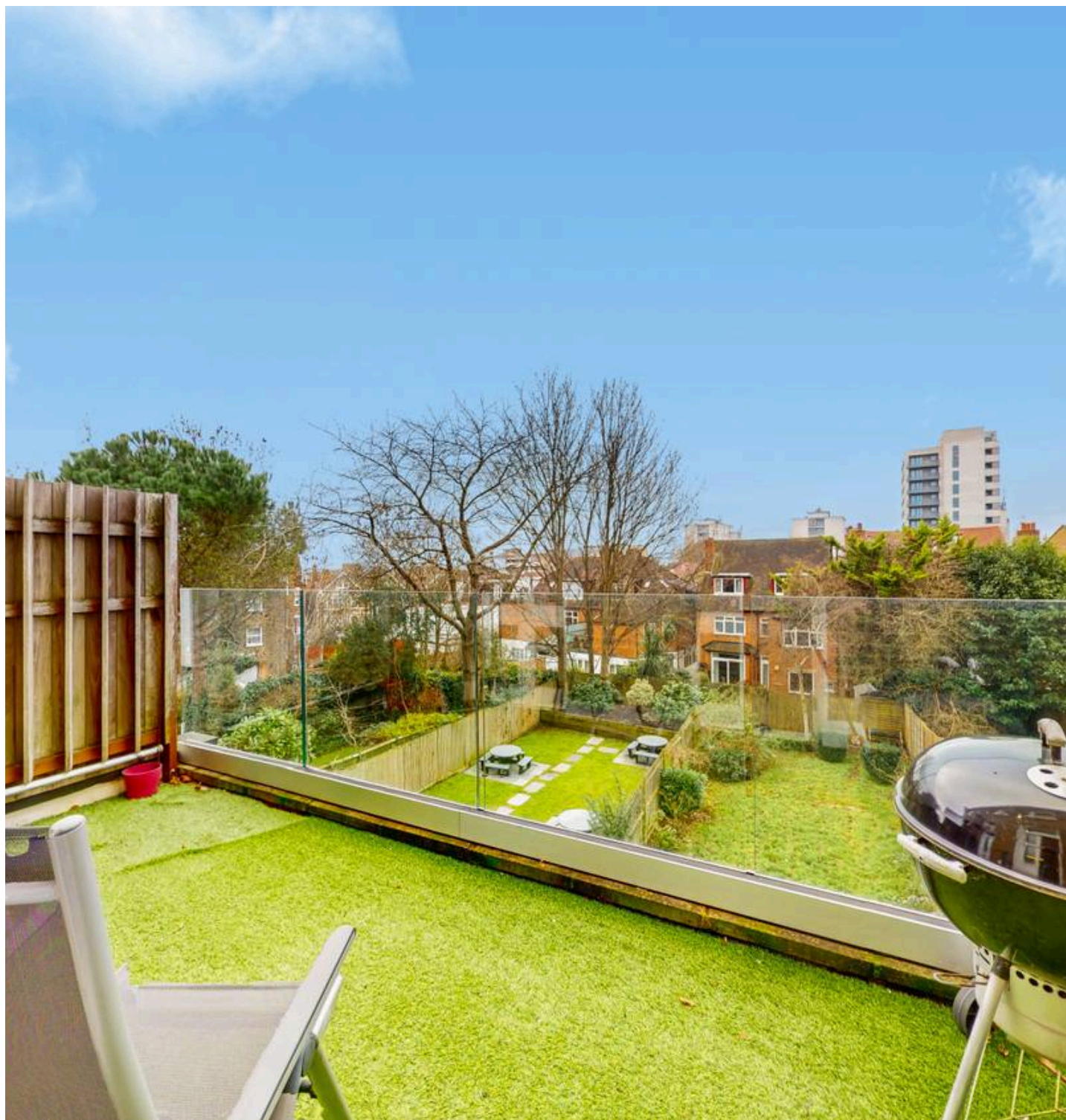
Fordwych Road, London, NW2.

A generously sized and beautifully presented two bedroom flat available to rent, offering excellent living space and modern finishes throughout. The property comprises two large double bedrooms, both well proportioned and ideal for comfortable living, making it suitable for sharers or a professional couple.

The flat benefits from a spacious and bright living room, enhanced by large glass doors that open directly onto a private terrace, providing a perfect space for relaxing or entertaining. In addition, residents have access to a well-maintained communal garden.

There is a large separate kitchen fitted with modern units and appliances, offering ample storage and worktop space. The property also features a large, stylish bathroom complete with a separate shower and bath.

The flat is furnished and finished to a high standard throughout, creating a contemporary and welcoming home. Conveniently located close to local amenities and transport links, this impressive property combines generous indoor space with excellent outdoor areas and is ideal for long-term letting.



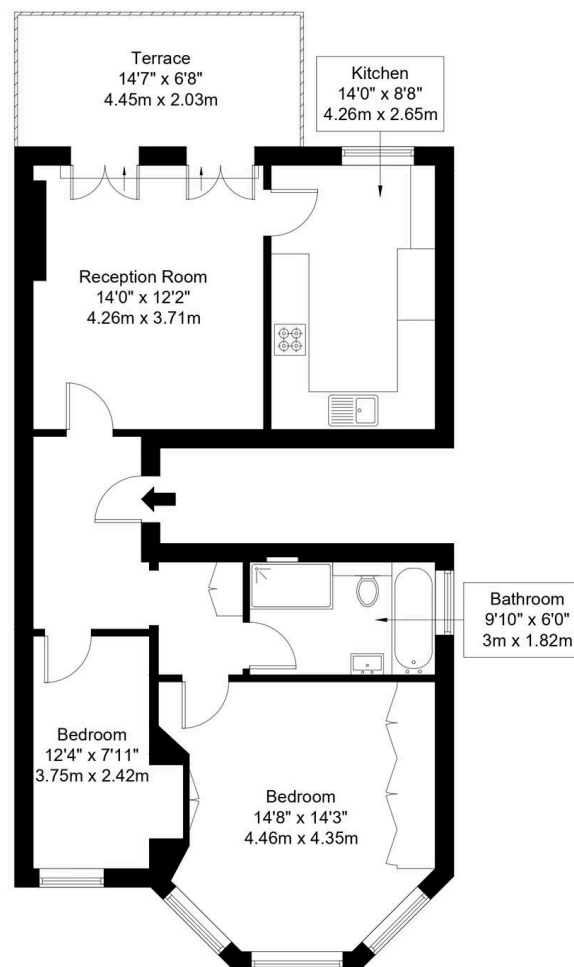
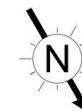


Fordwych Road, NW2 3TH

Approx Gross Internal Area = 67.6 sq m / 728 sq ft

Terrace = 9 sq m / 97 sq ft

Total = 76.6 sq m / 825 sq ft



First Floor

Ref :

Copyright

B L E U
P L A N

The Floor plan is not to scale and measurements and areas shown are approximate and therefore should be used for illustrative purposes only. The plan has been prepared in accordance with the RICS code of Measuring Practice and whilst we have confidence in the information produced it must not be relied on. Maximum lengths and widths are represented on the floor plan. If there is any aspect of particular importance, you should carry out or commission your own inspection of the property.

Copyright @ BleuPlan



Black Katz

22 West Hampstead Mews, London - NW6 3BB

02073285000 • Thomas@blackkatz.com • blackkatz.com/