



Room 5, King Edward Street, Sandiacre
£550 pcm



Room 5, 2, King Edward Street

Sandiacre

Modern 6-Bed Co-Living Home – High Spec Rooms in prime Sandiacre Location.

Introducing this beautifully designed co-living development featuring six bedrooms. The property offers stylish shared living, dining and kitchen spaces, thoughtfully created for young professionals seeking a high-quality, sociable and secure home.

Room 5 is located on the second floor of the property and shares a bathroom with Room 5 which is also located on the second floor. Each room is fully furnished and comes with a TV.

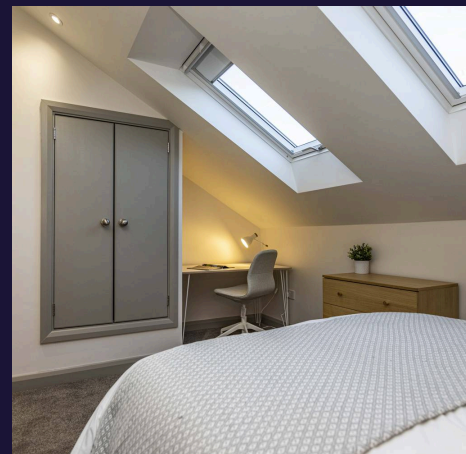
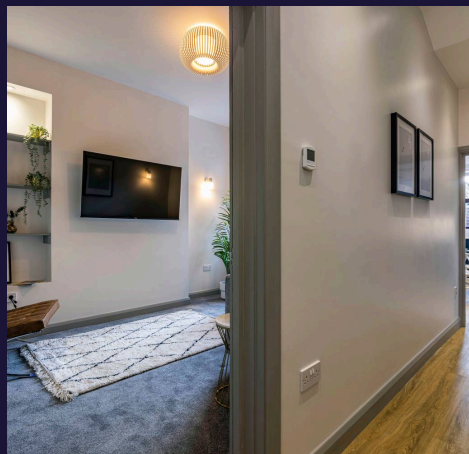
Located in the heart of Sandiacre, this property is perfectly positioned for commuters, offering excellent transport links to both Nottingham and Derby via the A52 and J25 of the M1, as well as regular public transport options just minutes away.

Sandiacre offers fantastic local amenities including supermarkets, shops, gyms and eateries. A Co-op is just at the end of the road, with Lidl also within walking distance. Nature lovers will enjoy the nearby Erewash Canal, perfect for peaceful walks and outdoor time.

Available from 19th January 2026 with bills included – contact us today to arrange a viewing.

Modern 6-Bed Co-Living Home – High Spec Rooms in prime Sandiacre Location.

Introducing this beautifully designed co-living





Bedroom 5

12' 2" x 11' 10" (3.70m x 3.60m)

Room 5 is located on the second floor of the property at the front of the house and shares a bathroom, also on the second floor, with room 6. The room is fully furnished with a double bed, mattress, built in wardrobe, desk with chair, two bedside tables and a wall mounted TV. Velux windows let in plenty of natural light and fresh air in the warmer months.

Bathroom

There is a bathroom located on the top floor outside rooms 5 & 6. The room is decorated to a modern standard featuring a shower cubicle, WC, hand basin with vanity unit and mirror.

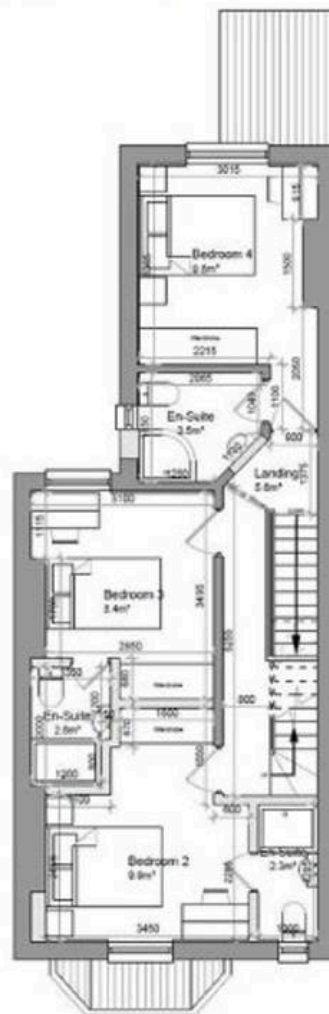
Kitchen

Modern communal kitchen available for all tenants to use, fully equipped with appliances and complete with a dining table and chairs.

Lounge

Communal lounge featuring a comfortable corner sofa and TV - perfect for relaxing and socialising.







Comfort Estates

Comfort Estates, 47 Derby Road - NG1 5AW

0115 9338997 • info@comfortestates.co.uk • www.comfortestates.co.uk