

**FOR SALE**



**Burntwood Crescent, Treeton**  
**Asking Price Of £140,000**

  
**MARTIN&CO**





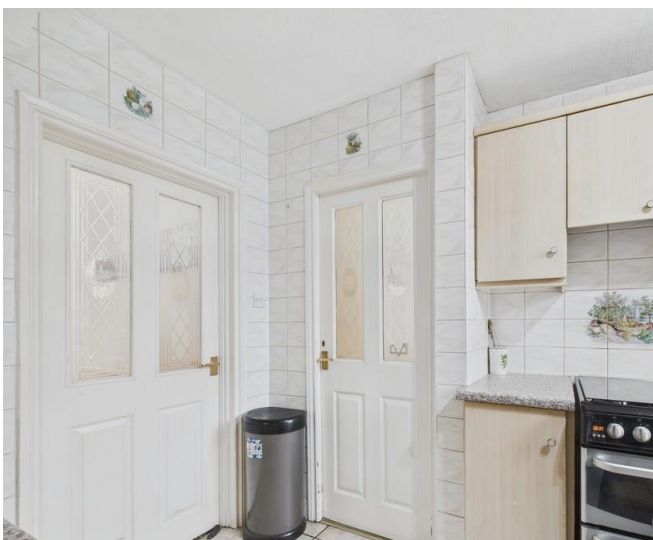
## Burntwood Crescent, Treeton

2 Bedrooms, 1 Bathroom

Asking Price Of £140,000

- Semi detached
- Two bedrooms
- No chain
- Commuter links
- Off road parking

Offered for sale with no chain involved is this two double bedroom semi detached home. Set in this popular location and would suit a varied purchaser. The property gives access to local amenities, public transport links, the M1, M18 and Sheffield Parkway. In brief the property comprises of entrance hall with stairs to the first floor landing. Front facing lounge with feature fire. Dining room with feature fire and patio doors to the rear garden. Kitchen with a range of fitted wall and base units in beech with space for appliances. First floor landing there are two double bedrooms, master with fitted wardrobes to two walls. Shower room with a white three piece suite. Outside there is off road parking to the front. To the rear is an enclosed garden with lawn, patio and shrub borders.



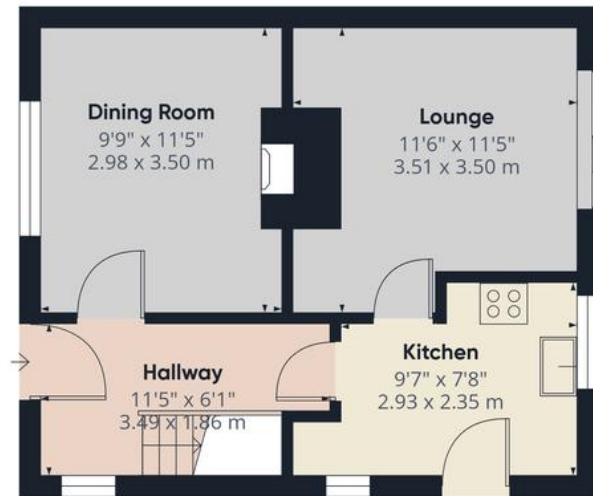




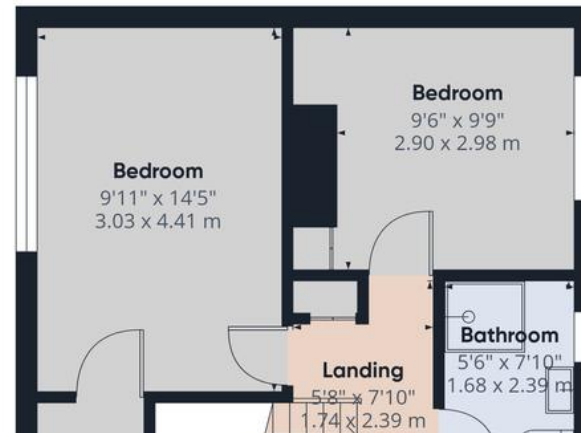
%epcGraph\_c\_1\_544%







Ground Floor



Approximate total area<sup>(1)</sup>  
706 ft<sup>2</sup>  
65.7 m<sup>2</sup>

(1) Excluding balconies and terraces

Calculations reference the RICS IPMS  
3C standard. Measurements are

## Martin & Co Rotherham

5 Worry Goose Lane • Whiston • Rotherham • S60 4AA  
T: 01709 544982 • E: rotherham@martinco.com

01709 544982

<http://www.martinco.com>



**Accuracy:** References to the Tenure of a Property are based on information supplied by the Seller. The Agent has not had sight of the title documents. A Buyer is advised to obtain verification from their Solicitor. Items shown in photographs including but not limited to carpets, fixtures and fittings are not included unless specifically mentioned within the sales particulars. They may however be available by separate negotiation. Buyers must check the availability of any property and make an appointment to view before embarking on any journey to see a property. No person in the employment of the agent has any authority to make any representation about the property, and accordingly any information given is entirely without responsibility on the part of the agents, sellers(s) or lessors(s). Any property particulars are not an offer or contract, nor form part of one. **Sonic / Laser Tape:** Measurements taken using a sonic / laser tape measure may be subject to a small margin of error. **All Measurements:** All Measurements are Approximate. **Services Not tested:** The Agent has not tested any apparatus, equipment, fixtures and fittings or services and so cannot verify that they are in working order or fit for the purpose. A Buyer is advised to obtain verification from their Solicitor or Surveyor.