



Apt 16, Lexington Place, 7 Plumptre Street – NG1 1AN

Guide Price £170,000 – £175,000

DavidJames
the estate agent



Apartment 16

Lexington Place, Nottingham

GUIDE PRICE £170,000-£175,000 Top floor 2 double bed city centre apartment in the iconic Lace Market – offered to the market with no upward chain and ideal for City-based professionals or investors!

Council Tax band: D

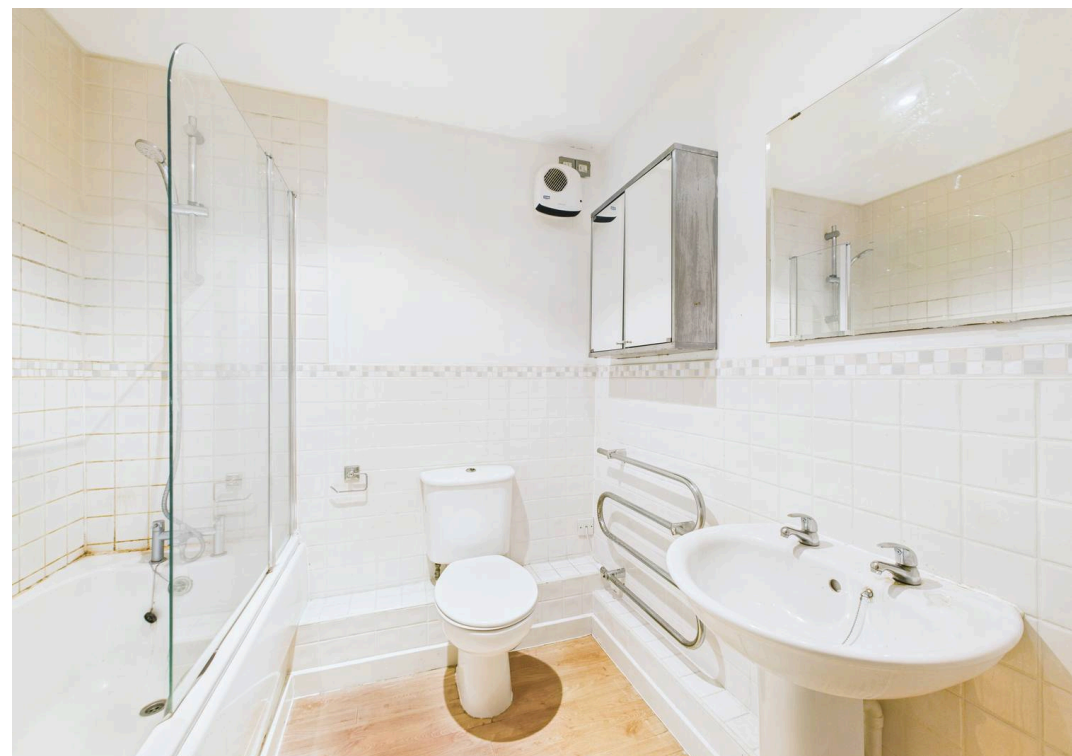
Tenure: Leasehold

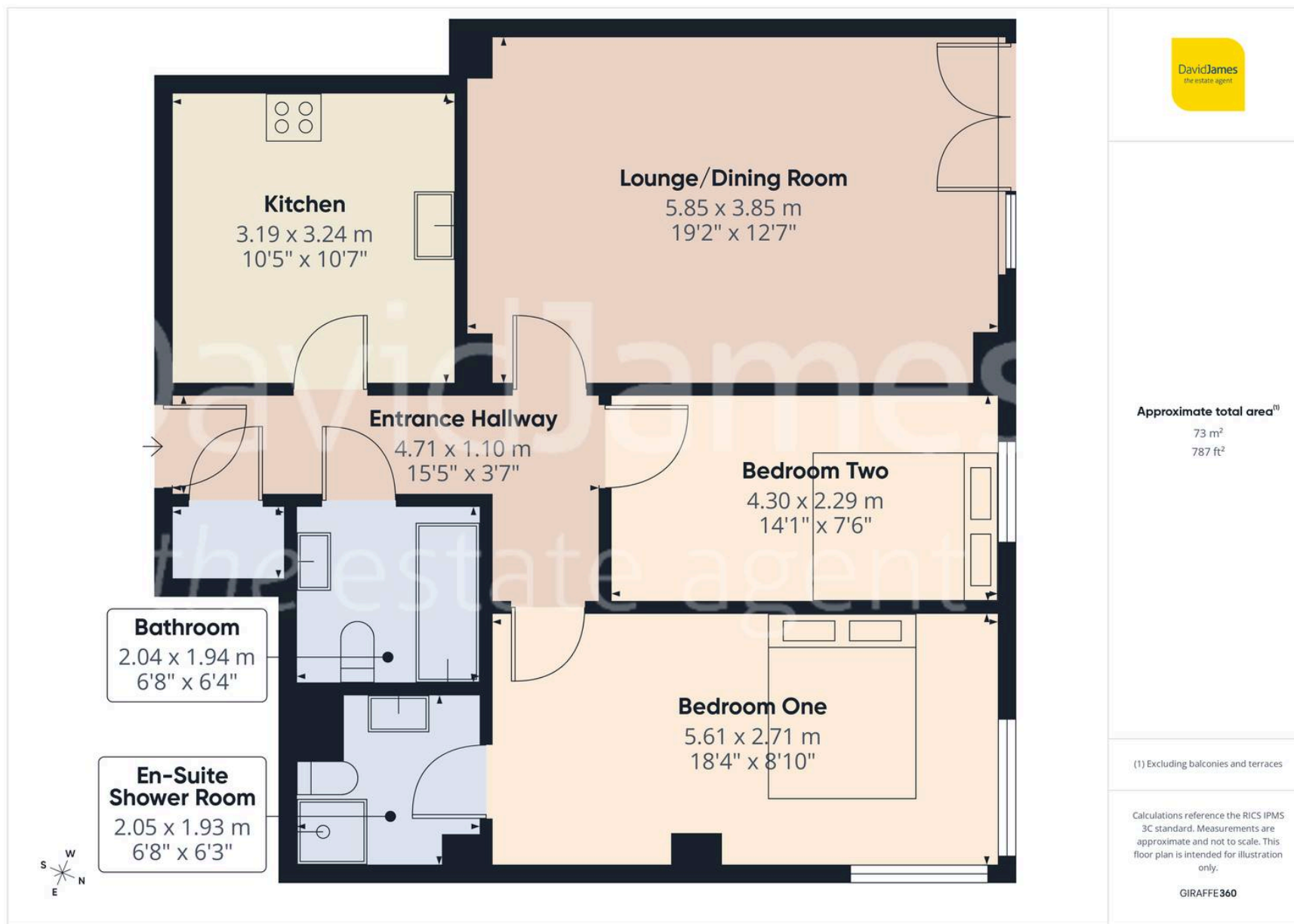
EPC Energy Efficiency Rating: B

EPC Environmental Impact Rating: C

- Top floor apartment in the heart of Nottingham's Lace Market
- Perfect for first-time buyers, professionals or buy-to-let investors
- Nottingham's excellent amenities and transport links on the doorstep
- Available to purchase with no upward chain
- Entrance hallway with useful storage and a secure intercom entry system
- Spacious lounge/dining room offering flexible furniture arrangements and a feature Juliet balcony with cityscape views
- Modern fitted kitchen with a range of integrated appliances
- Two well-proportioned double bedrooms (main bedroom with en-suite shower room)
- Modern three-piece bathroom suite with an over-bath shower
- Secure allocated parking space







David James Estate Agents

David James Estate Agents, 45B Plains Road – NG3 5JU

0115 962 4213 • mapperley@david-james.com • www.david-james.com

These particulars are produced in good faith and are set out as a general guide only. Measurements are approximate and floor plans are for illustrative purposes only. Services have not been tested. We have established professional relationships with third-party suppliers for the provision of services to Clients, details of which can be found on the property listing page on our website.