



KINGFISHER WAY, BISHOP'S STORTFORD

PRICE – £1,400 PCM

- TWO BEDROOM MAISONETTE TO LET
- UNFURNISHED
- AVAILABLE IMMEDIATELY
- DEPOSIT OF £1,615
- LARGE LIVING ROOM
- KITCHEN DINER
- BUILT-IN WARDROBES TO PRINCIPAL BEDROOM
- THREE PIECE FAMILY BATHROOM
- ON-ROAD PERMIT PARKING
- WALKING DISTANCE TO LOCAL AMENITIES, MAINLINE RAILWAY STATION AND BUS CONNECTIONS TO STANSTED AIRPORT

We are pleased to offer this amazing 2 bedroom property, located in the popular town of Bishop's Stortford. This property enjoys a large living room, kitchen diner, two generous bedrooms (with built-in wardrobes to the principal bedroom) and a three piece family bathroom. There is on-road permit parking also.





With composite panel and obscure glazed front door opening into:

Entrance Hall

With window to side, ceiling lighting, fitted mat, stairs rising to first floor landing with ceiling lighting, wall mounted radiator, wood effect flooring, power point, stairs rising to second floor landing and doors to rooms.

Kitchen Diner

Comprising eye and base level cupboards and drawers with complimentary stone effect contemporary worksurface, 1 1/2 bowl single drainer stainless steel sink unit with mixer tap, 4-ring induction hob with stainless steel extractor fan above, oven under, tiled splashback, recess and power for tall fridge-freezer, recess power & plumbing for washing machine, integrated dishwasher, cupboard housing combination boiler, window to front, inset ceiling downlighting, counter display lighting, power points, wall mounted radiator, wood effect flooring.

Living Room 15'6" x 12'8"

With window to rear, ceiling lighting, wall mounted radiators, TV and power points, understairs storage cupboard, wood effect flooring.

Second Floor Landing

With access to loft, over-stairs storage cupboard, fitted carpet, power point, ceiling lighting, doors to rooms.

Bedroom 1 – 12'9" x 9'4"

With window to front, ceiling lighting, wall mounted radiator, power points, fitted carpet, built-in wardrobes.

Bedroom 2 – 12'9" x 8'0"

With window to rear, ceiling lighting, wall mounted radiator, power points, fitted carpet.

Family Bathroom

Comprising a P-shaped panelled bath with mixer tap and twin head shower over, tiled surround with glazed screen, close coupled WC, vanity mounted wash hand basin with mixer tap and tiled splashback, vanity mirror over, chromium heated towel rail, inset ceiling downlighting, extractor fan, ceiling lightwell, tiled flooring.

OUTSIDE

The Front

The property enjoys on-road permit parking and there is a bay of parking spaces on a first come first serve basis, steps leading down to front door.



DETAILS

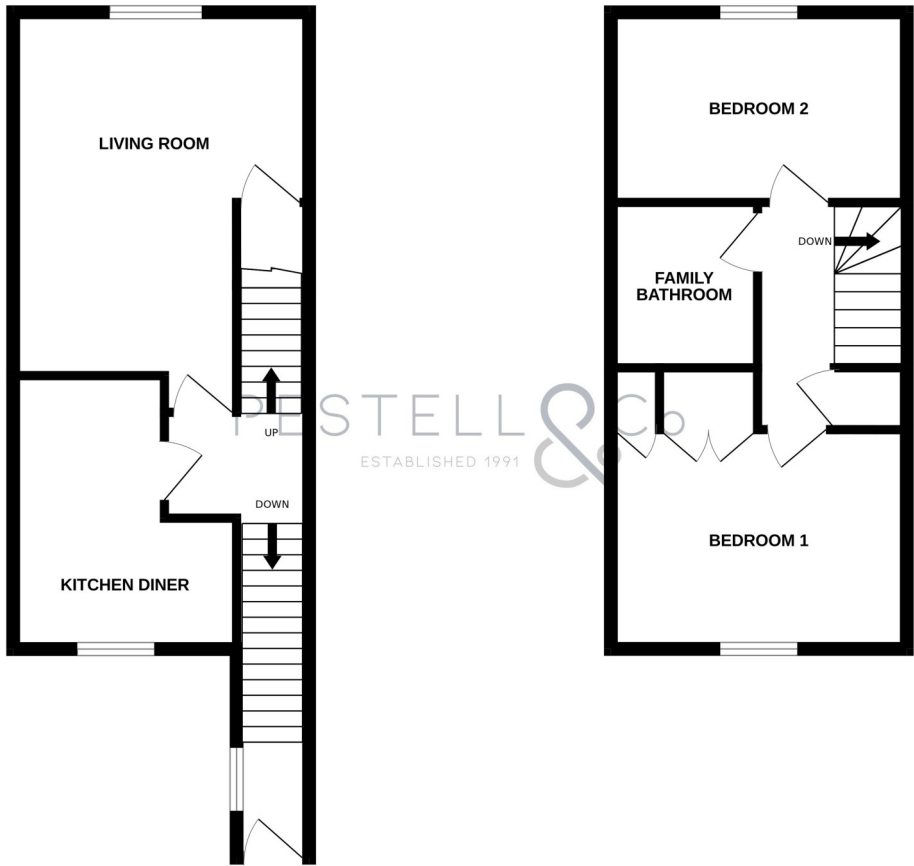
EPC

Score	Energy rating	Current	Potential
92+	A		
81-91	B		
69-80	C	76 C	76 C
55-68	D		
39-54	E		
21-38	F		
1-20	G		

FLOOR PLAN

1ST FLOOR
371 sq.ft. (34.5 sq.m.) approx.

2ND FLOOR
343 sq.ft. (31.9 sq.m.) approx.

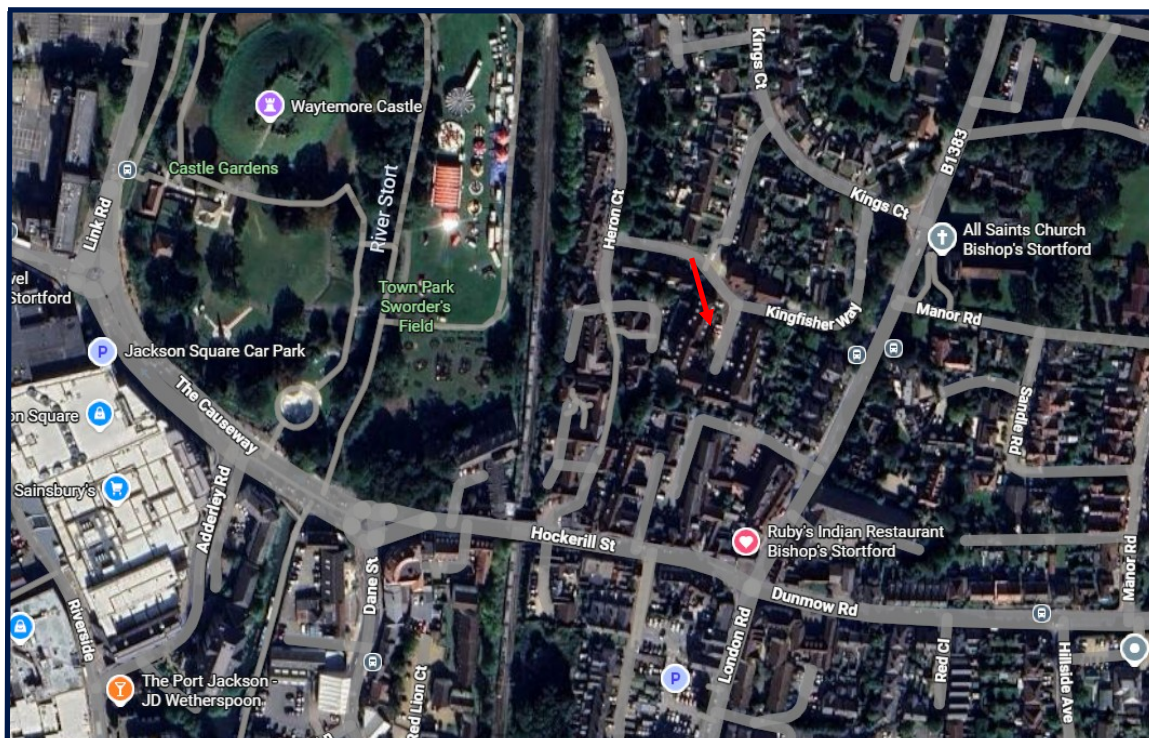


TOTAL FLOOR AREA: 715 sq.ft. (66.4 sq.m.) approx.
Whilst every attempt has been made to ensure the accuracy of the floorplan contained here, measurements of doors, windows, rooms and any other items are approximate and no responsibility is taken for any error, omission or mis-statement. This plan is for illustrative purposes only and should be used as such by any prospective purchaser. The services, systems and appliances shown have not been tested and no guarantee as to their operability or efficiency can be given.
Made with Metropix ©2025

GENERAL REMARKS & STIPULATIONS

Kingfisher Way is located in the popular town of Bishop's Stortford which offers schooling, shopping, eateries and recreational facilities. Bishop's Stortford has a mainline train station which serves London Liverpool Street, Cambridge and Stansted Airport and is a three minutes walk from the property. The M11 and M25 motorways are just a short drive giving easy onward access to London and the North.

DIRECTIONS



FULL PROPERTY ADDRESS

24 Kingfisher Way, Bishop's Stortford, CM23 2AZ

COUNCIL TAX BAND

Band C

SERVICES

Gas central heating, mains water & electricity

LOCAL AUTHORITY

East Hertfordshire District Council, Wallfields, Pegs Lane, Hertford, SG13 8EQ.

AGENTS NOTE: We believe information supplied in this brochure is accurate as of the date 10/01/2026. The information given in these particulars is intended to help you decide whether you wish to view this property and to avoid wasting your time in viewing unsuitable properties. We have tried to make sure that these particulars are accurate, but to a large extent we have to rely on what the seller tells us about the property. We do not check every single piece of information ourselves as the cost of doing so would be prohibitive and we do not wish to unnecessarily add to the cost of moving house. In accordance with the misrepresentation act, we are required to inform both potential vendors and purchasers, that from time to time both vendors and or purchasers, may be known by our staff, by way of previous customers, friends, neighbours, relatives, etc. Once you find the property you want to buy, you will need to carry out more investigations into the property than it is practical or reasonable for an estate agent to do when preparing sales particulars. For example, we have not carried out any kind of survey of the property to look for structural defects and would advise any homebuyer to obtain a surveyor's report before exchanging contracts. If you do not have your own surveyor, we would be pleased to recommend one. We have not checked whether any equipment in the property (such as central heating) is in working order and would advise homebuyers to check this. You should also instruct a solicitor to investigate all legal matters relating to the property (e.g. title, planning permission etc.), as these are specialist matters in which estate agents are not qualified. Your solicitor will also agree with the seller what items (e.g. carpets, curtains etc.) will be included in the sale.

PESTELL & Co

ESTABLISHED 1991

ESTABLISHING OURSELVES AS LEADING LOCAL AGENTS FOR OVER 33 YEARS!



WE HAVE IT COVERED, DON'T HESITATE TO CONTACT ONE OF OUR EXPERIENCED TEAM FOR FURTHER INFORMATION!

Would you like a free home valuation?

Want to change agent and get your property sold?

Do you have a property that you would like to rent but uncertain how to go about it?

Interested in Land acquisition?

Do you have a commercial property to sell or let?

Are you a developer looking for an agent to market or value your site?