



Wardour Street, Chinatown, W1D 6PP  
**£375 pw**

› Studio    › 1 Bathroom    › Unfurnished

**TAVISTOCKBOW**  
RESIDENTIAL



- › Studio apartment
- › One modern shower room
- › Brand new refurbishment
- › Comfort cooling
- › Secondary glazing
- › Unfurnished
- › 2nd floor (no lift)
- › Wooden flooring
- › Available Immediately
- › Close to Leicester Square underground



Located in the heart of Chinatown, this newly refurbished studio apartment comprises of an open plan living space with fully fitted kitchen, and a separate, modern shower room. Property benefits from secondary glazing, wooden floors and comfort cooling

throughout. Available immediately, unfurnished.







### WHAT WE LOVE:

Moments from Leicester Square  
 Newly refurbished  
 Natural light  
 Wood floors  
 Comfort cooling.

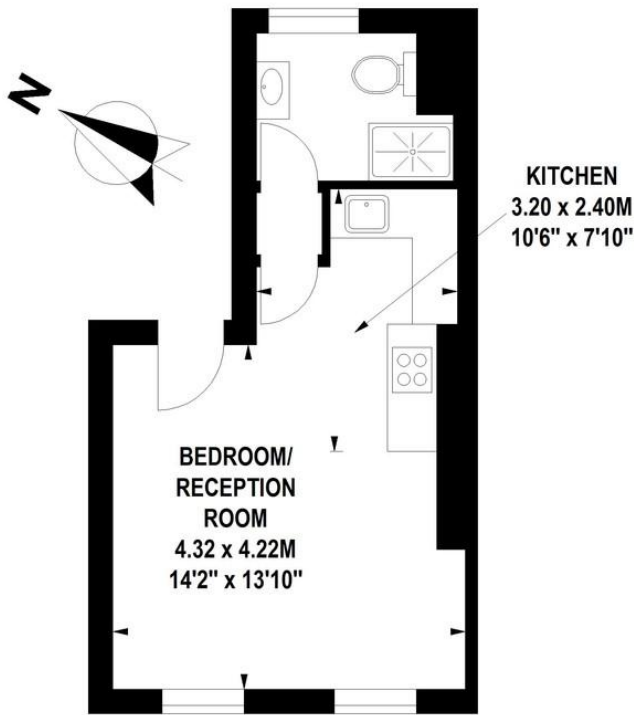
### WHAT YOU NEED TO KNOW:

Westminster council tax C  
 Dishwasher, washer/ dryer  
 2nd floor (no lift)  
 Electric hob  
 Secondary glazing.



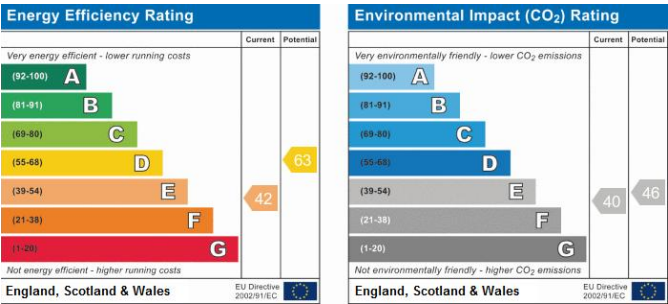
Wardour Street, W1D

Approximate gross internal area  
27 sq m / 291 sq ft



Second Floor

Floor Plan produced for Tavistock Bow by Mays Floorplans © . Tel 020 3397 4594  
Illustration for identification purposes only, not to scale  
All measurements are maximum, and include wardrobes and window bays where applicable



About Us

Tavistock Bow is an independent residential agency based in Covent Garden. We are niche, boutique, creative, knowledgeable, professional and approachable. We love what we do and that's why we do it.

Contact Us

- a. 31 Long Acre, London, WC2E 9LA
- t. 020 7477 2177
- e. hello@tavistockbow.com
- w. tavistockbow.com

- f. /tavistockbow
- i. /tavistockbow
- t. @tavistockbow