



## Wrotesley Road, London

### £2,600 pcm

Welcome to Wrotesley Road, NW10.

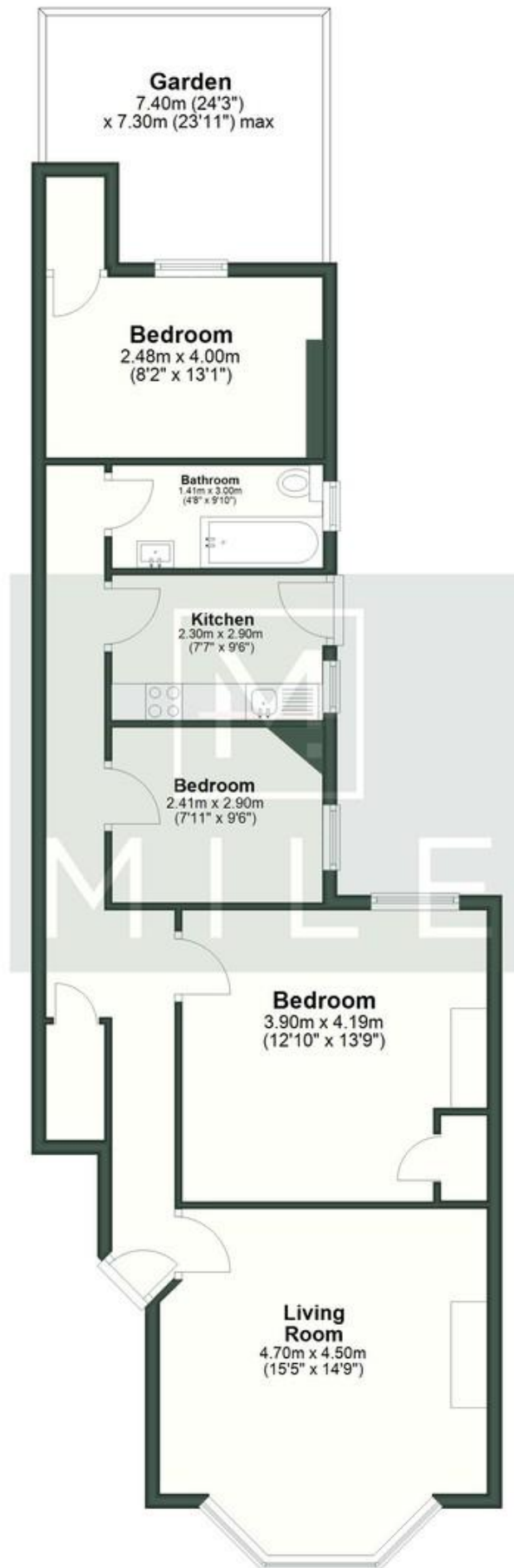
A well-presented three-bedroom flat located in the heart of Kensal Rise. Offered in excellent condition and available now, the property provides bright, well-proportioned living accommodation suitable for families or professional sharers.

Further benefits include off-street parking and access to a private garden. Ideally positioned close to local shops, cafés and excellent transport links, including Kensal Green Underground and Willesden Junction stations.

- Ground floor apartment
- Private garden
- Three bedrooms
- Available now
- Off street parking
- Excellent condition
- Great location
- Great primary schools in proximity
- Semi detached
- Close to shops and transport

## Ground Floor

Approx. 78.5 sq. metres (844.6 sq. feet)



**MONEY LAUNDERING REGULATIONS 2003:** Intending purchasers will be asked to produce identification documentation at a later stage and we would ask for your co-operation in order that there will be no delay in agreeing the sale.

**General:** While we endeavour to make our sales particulars fair, accurate and reliable, they are only a general guide to the property and, accordingly, if there is any point which is of particular importance to you, please contact the office and we will be pleased to check the position for you, especially if you are contemplating travelling some distance to view the property.

**Measurements:** These approximate room sizes are only intended as general guidance. You must verify the dimensions carefully before ordering carpets or any built-in furniture.

**Services:** Please note we have not tested the services or any of the equipment or appliances in this property, accordingly we strongly advise prospective buyers to commission their own survey or service reports before finalising their offer to purchase.