



## 2 Bedroom Detached Bungalow located in Tiptree.

Find us on..



**JOHN ALEXANDER**  
ESTATE AGENTS



# Church Road Tiptree Colchester CO5 0SU



2



1



1

## FULL DESCRIPTION

### OVERVIEW

Located within walking distance to the local Village shops in Tiptree we are delighted to offer this two bedroom detached bungalow which is well presented being offered with NO CHAIN!!

### ENTRANCE HALL

Radiator, access to loft.

### BATHROOM

White suite comprising of panelled bath, low level WC, wash basin, chrome heated towel rail, obscure double glazed window to front.

### BEDROOM ONE

**10' 7" x 10' 4" (3.23m x 3.15m)**

Double glazed window to rear, radiator, built in wardrobes.

### EN-SUITE SHOWER ROOM

Corner shower, wash basin, low level WC, chrome heated towel rail, obscure double glazed window to side.

### BEDROOM TWO

**9' 3" x 9' 0" (2.82m x 2.74m)**

Double glazed window to front, radiator, built in wardrobes.

### KITCHEN

**9' 9" x 8' 0" (2.97m x 2.44m)**

Stainless steel single bowl and drainer sink unit with cupboards under, matching base and eye level cupboards, roll top work surfaces, integrated fridge freezer, oven, hob and extractor fan, space for washing machine, built in cupboard housing gas boiler, radiator, double glazed window to front.

### LOUNGE

**17' 5" x 12' 9" (5.31m x 3.89m)**

Double glazed windows and door to rear, two radiators.

### OUTSIDE

Side access to rear garden which is shingled, outside tap and electric points, enclosed by fencing.

There are a number of parking bays outside for several vehicle's.

Asking Price Of  
**£350,000**





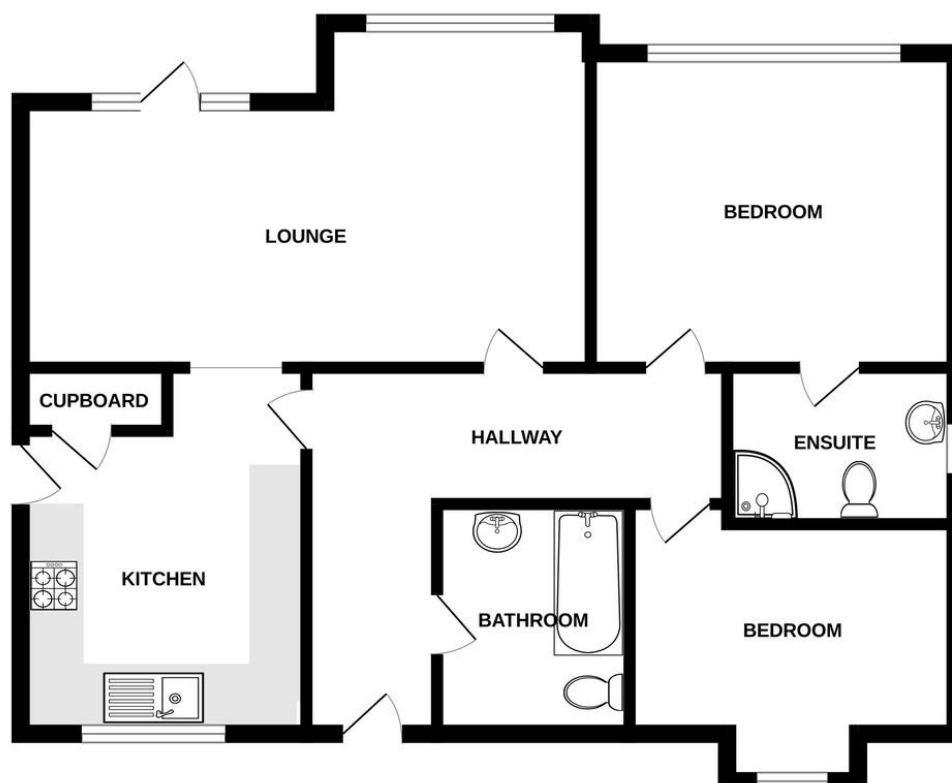




**Church Road, Tiptree CO5 0SU**



GROUND FLOOR



Whilst every attempt has been made to ensure the accuracy of the floorplan contained here, measurements of doors, windows, rooms and any other items are approximate and no responsibility is taken for any error, omission or mis-statement. This plan is for illustrative purposes only and should be used as such by any prospective purchaser. The services, systems and appliances shown have not been tested and no guarantee as to their operability or efficiency can be given.  
Made with Metropix ©2026

CONTACT  
1 Church Road  
Tiptree  
Colchester  
Essex  
CO5 0LG

E [info@john-alexander.co.uk](mailto:info@john-alexander.co.uk)

T 01621 814334 [www.john-alexander.co.uk](http://www.john-alexander.co.uk)

Find us on..



**JOHN ALEXANDER**  
ESTATE AGENTS