



**Imperial Close, Harrow, HA2 7LN**

Guide Price £325,000 | Leasehold



**LAWRENCE RAND**





## Key Features & Descriptions:

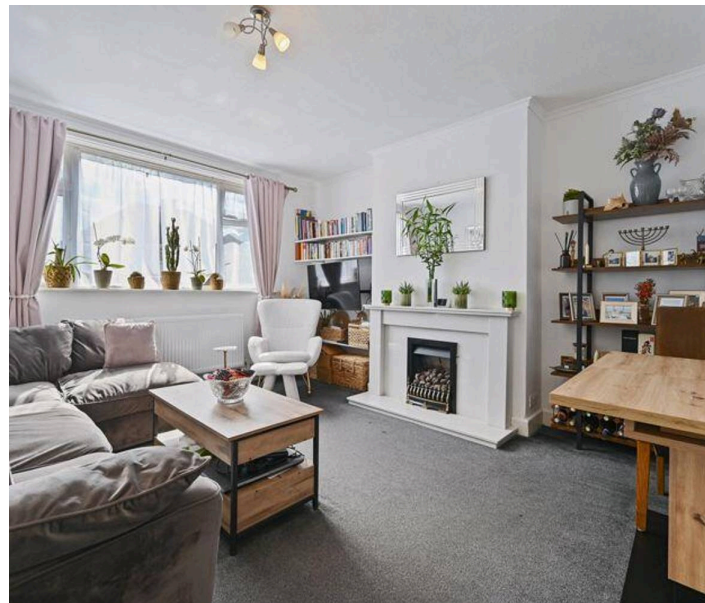
- One double bedroom ground floor maisonette
- Spacious kitchen with direct access to private garden
- Modern fitted bathroom
- Own private entrance
- Comes with a long lease
- No upper chain

An attractive one-bedroom, purpose-built ground-floor maisonette, ideally suited to first-time buyers, downsizers or investors alike. The property enjoys its own private entrance, opening into a welcoming hallway that leads through to a bright and well-proportioned front-facing living room. The separate kitchen offers practical living space, while the generously sized double bedroom benefits from fitted wardrobes. A modern bathroom completes the internal accommodation.

One of the standout features of this home is its private section of the rear garden, providing a peaceful outdoor space ideal for relaxing or entertaining.

Further advantages include a long lease and no upper chain, making this an excellent opportunity for a smooth and straightforward purchase.

**Presented with care by Lawrence Rand - helping you find the place you'll love to call home.**







### **Nearest Stations:**

North Harrow (Metropolitan line) – 0.3 miles

Rayners Lane (Metropolitan & Piccadilly lines) – 0.4 miles

West Harrow (Piccadilly line) – 0.6 miles

### **Verified Material Information:**

Council Tax band: C, London Borough of Harrow

Tenure: 167 remaining on lease

EPC Energy Efficiency Rating: D

### **Suppliers:**

Electricity supply: Mains,

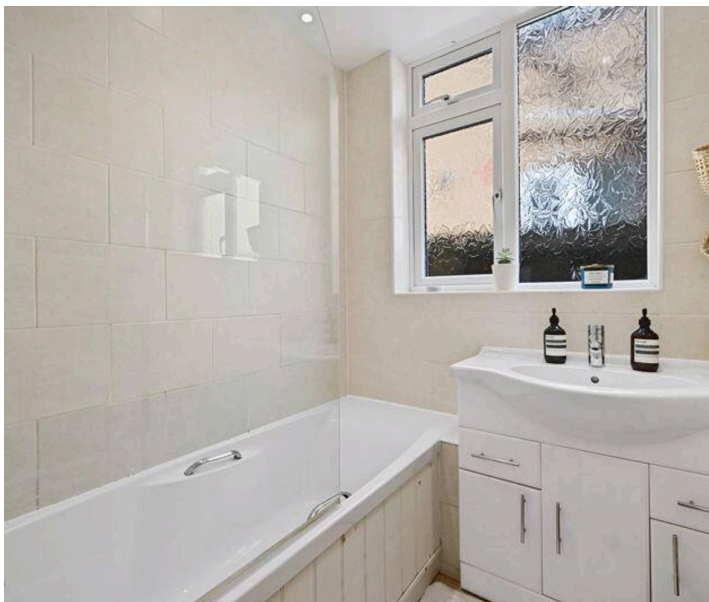
Water supply: Mains water

Sewerage: Mains

Heating: Gas Central

Broadband & mobile coverage:

Broadband: FTTP (Fibre to the Premises) Mobile coverage: O2 – Excellent, Vodafone – Excellent, Three – Excellent, EE Excellent





APPROX. GROSS INTERNAL FLOOR AREA: 610 SQ FT/ 57 SQM

**PROPERTY PHOTO PLANS**.CO.UK  
ONE STOP SHOP FOR PROPERTY MARKETING

This plan is for illustrative purposes only and should be used as such by any prospective client. Whilst every attempt has been made to ensure the accuracy of the Floor Plan contained here, measurements of the doors, windows, rooms and any other items are approximate and no responsibility is taken for any errors, omissions, or misstatement. The services, systems and appliances shown have not been tested and no guarantee as to the operability or efficiency can be given.

**Lawrence Rand**  
51 Victoria Road, Ruislip - HA4 9BH  
01895 632211  
Sales@lawrence-rand.co.uk  
www.lawrence-rand.co.uk

Lawrence Rand Limited has made every reasonable effort to ensure the accuracy of the information provided. However, we accept no responsibility for errors, omissions, or misstatements. All measurements, distances, and descriptions are approximate and for guidance only. Prospective purchasers or tenants must verify all details independently. Some images may include AI-generated virtual staging to illustrate the potential of the property and are for visual guidance only. No warranty is given or implied, and these particulars do not form part of any offer or contract. Lawrence Rand reserves the right to amend or withdraw any property without notice.