



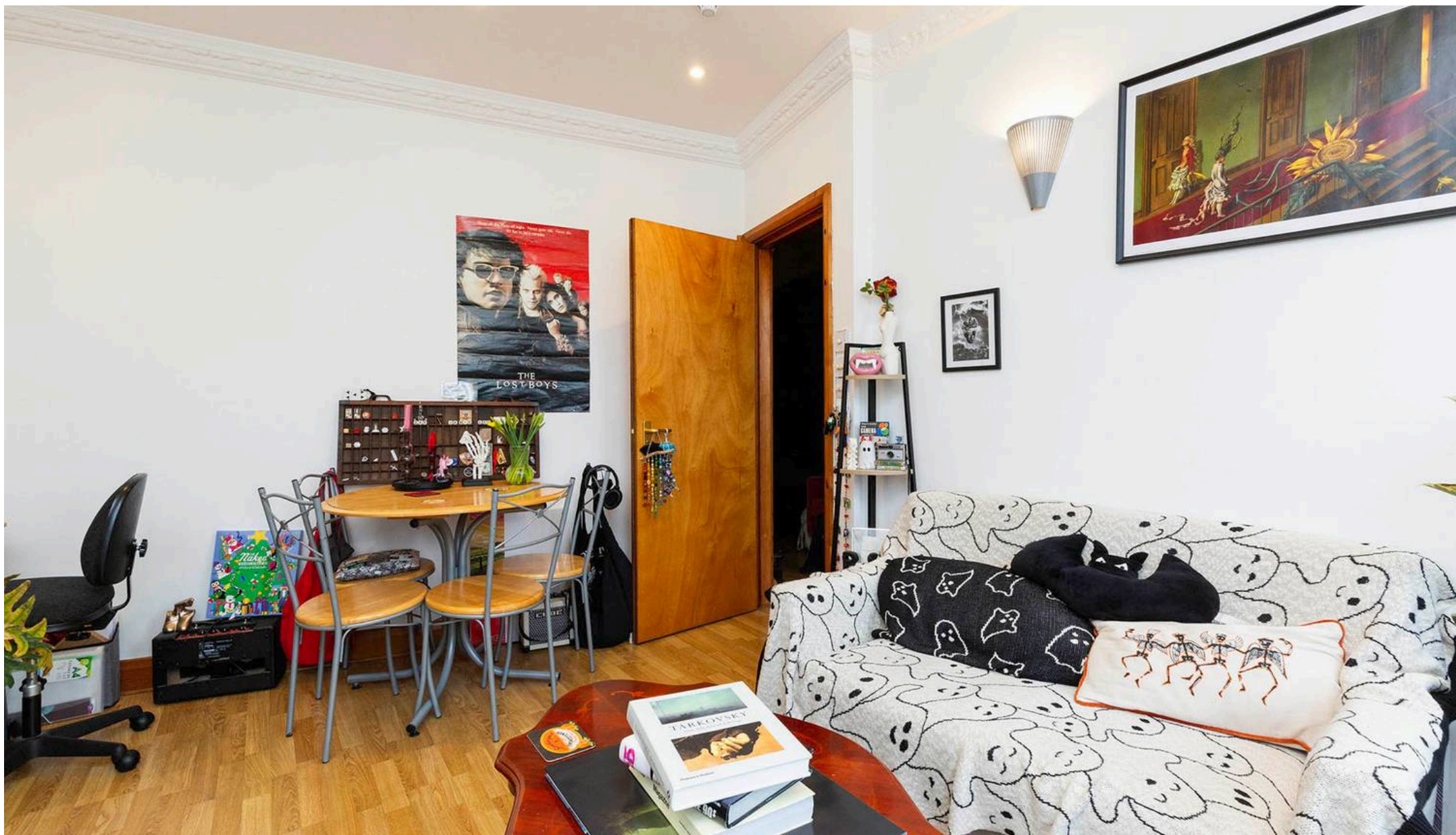
Burnley Road, London, NW10
£1,550 pcm

Burnley Road, London, NW10

Available From March. We are pleased to be marketing this spacious one double bedroom apartment located in Dollis Hill. The property benefits from a large reception room, separate fitted kitchen, expansive double bedroom and fully tiled bathroom. Additionally, the apartment is located a short walk from Dollis Hill tube (Jubilee Line) and has multiple bus connections. Please contact our office for more information and to arrange a viewing.







Black Katz

22 West Hampstead Mews, London - NW6 3BB

02073285000 • Thomas@blackkatz.com • blackkatz.com/