

FOR SALE

2 Bed Town House in Keightley Walk, Thurmaston, LE4 8LP
£180,000

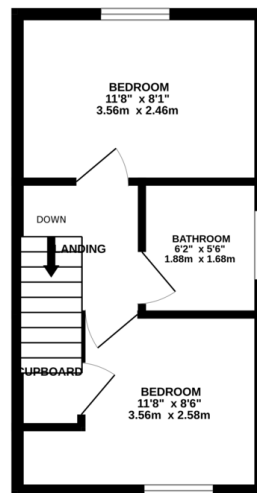
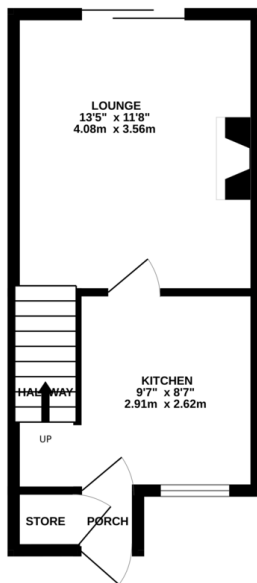
Occupying a corner plot tucked in the corner of a walkway of houses is this two bedroom end town house. The accommodation comprises porch, kitchen, lounge, two bedrooms, bathroom, rear garden and allocated parking space. The property would make a great first time buy!



GROUND FLOOR
278 sq.ft. (25.8 sq.m.) approx.

1ST FLOOR
268 sq.ft. (24.9 sq.m.) approx.

EPC to follow



TOTAL FLOOR AREA : 546 sq.ft. (50.7 sq.m.) approx.
Whilst every attempt has been made to ensure the accuracy of the floorplan contained here, measurements of doors, windows, rooms and any other items are approximate and no responsibility is taken for any error, omission or mis-statement. This plan is for illustrative purposes only and should be used as such by any prospective purchaser. The services, systems and appliances shown have not been tested and no guarantee as to their operability or efficiency can be given.
Made with Metropop ©2020

- End Town House
- Two Bedrooms
- Allocated Parking
- Walkway Location
- Close To Watermead Park
- Great Road Network Access
- New Boiler 2023
- Council Tax Band A

Agents Note: Whilst every care has been taken to prepare these sales particulars, they are for guidance purposes only. All measurements are approximate are for general guidance purposes only and whilst every care has been taken to ensure their accuracy, they should not be relied upon and potential buyers are advised to recheck the measurements.

