



Apt 1, Baycroft, La Route De La Haule, St. Lawrence  
£5,500 pcm

**BROADLANDS**

FINDING YOU A HOME SINCE 1972



# Apt 1, Baycroft, La Route De La Haule

St. Lawrence, Jersey

- Completed now and ready to move in!
- Built by Ashbe Construction for Melrose Homes
- Easy access to St. Helier, St. Aubin's Harbour and Airport
- Easy access onto the western cycle path and promenade walk
- High specification finishes throughout
- Stone's throw from the beach
- Allocated garage parking and visitor spaces
- Ground floor, with private south facing garden terrace & communal gardens
- Unfurnished, available immediately
- Entitled/Licensed Housing qualifications required
- Please contact the rentals team at [rentals@broadlandsjersey.com](mailto:rentals@broadlandsjersey.com)



# Apt 1, Baycroft, La Route De La Haule

St. Lawrence, Jersey

Baycroft is an exclusive development of seven luxury apartments overlooking St Aubins Bay. Built to an immaculate standard by Ashbe Construction for Melrose Homes, Baycroft has been architecturally designed to echo design elements of the surrounding properties whilst providing a contemporary lifestyle with high specification finishes throughout. Apartment One features three bedrooms and two bathrooms across 1,592sqft and benefits from its own south facing garden terrace, as well as the use of the landscaped communal gardens, garage with electric charge point and allocated parking space as well as visitor spaces. Ideally located across the road from the beach and promenade with easy access to St Aubins Harbour cafes and restaurants.





**Living**

Bright & airy open plan kitchen/diner/living room, separate utility room

**Sleeping**

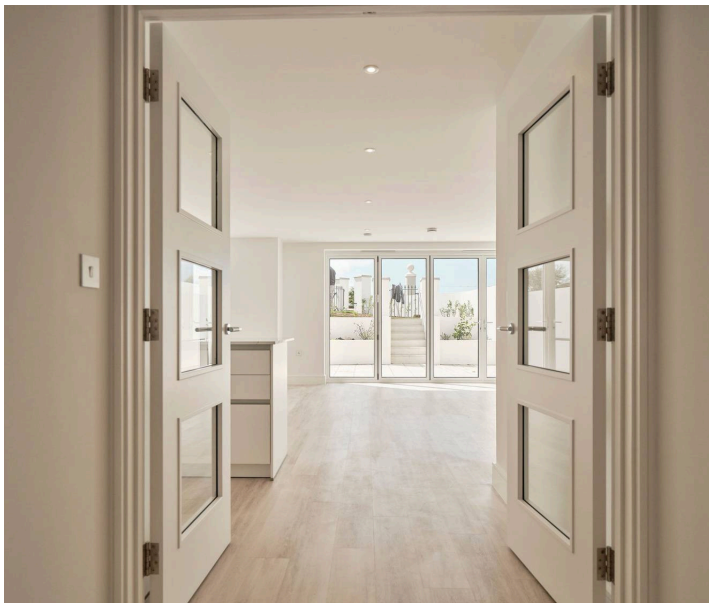
3 bedrooms and 2 bathrooms. Primary bedroom with ensuite & dressing room

**Outside**

Private, south facing terrace & garden, as well as the use of the landscaped communal gardens. Garage with electric charge point and allocated parking space, as well as visitor spaces

**Services**

All mains services excluding gas. Rent is inclusive of window cleaning & gardener for the communal areas

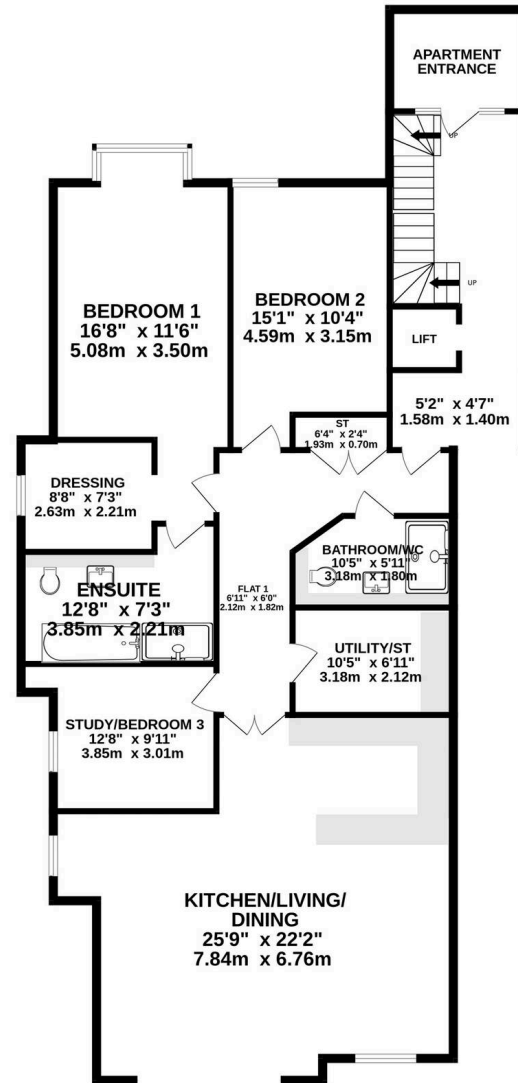








GROUND FLOOR







## Broadlands

Broadlands Estates, Library Place - JE2 3NL

01534 880770 • [enquiries@broadlandsjersey.com](mailto:enquiries@broadlandsjersey.com) • [www.broadlandsjersey.com/](http://www.broadlandsjersey.com/)

# BROADLANDS

FINDING YOU A HOME SINCE 1972