



OFFICE HOURS:

Monday to Friday	9 am	to	5 pm
Saturday	9 am	to	2 pm
Sunday and Bank Holidays	12 noon	to	2 pm

10 good reasons to choose DMA

- * Open 7 days a week.
- * Filey's longest established family run independent estate agency.
- * Prompt efficient friendly service.
- * 360° virtual tours and floor plans.
- * Free advertising: no sale - no charge.
- * Free no obligation market valuation.
- * Free accompanied viewing.
- * Dedicated sales progression.
- * Prominent town centre location.
- * Modern walk-round self selection display.

RESIDENTIAL
SALES

DMA

ESTATE
AGENTS

COMMERCIAL
SALES

Proprietors: David Mansfield ATTON FNAEA.

Samantha ADDISON

www.dmaestateagents.co.uk

ESTABLISHED 1992



These particulars are intended only to give a fair description of the property, as a guide to prospective buyers. Accordingly a) their accuracy is not guaranteed and neither DMA Estate Agents nor the vendor(s) accept any liability in respect of their contents; b) they do not constitute an offer or contract of sale, and c) any prospective purchaser should satisfy themselves by inspection or otherwise as to the correctness of any statement or information in these particulars.

DMA

ESTATE
AGENTS



'WHITEHOUSE FARM', 33 STONEGATE, HUNMANBY YO14 0NS



Freehold £640,000

FEATURES

- * Beautifully presented detached four bedroom character cottage **with a one bedroom self-contained detached bungalow located to the rear of the property, an ideal investment opportunity currently used as a successful Air BnB.**
- * Located close to the centre of this large village.
- * The property has been sympathetically modernised and retains many character features.
- * Gas fired central heating to radiators.
- * Double glazed windows in timber frame.
- * Two reception rooms.
- * Utility room. Downstairs wet room.
- * Modern kitchen and bathroom.
- * Ensuite to master bedroom.
- * Enclosed rear garden.
- * Side drive to double garage with ample parking.
- * Viewing is very highly recommended to appreciate the amount of accommodation this property offers.

ACCOMMODATION IN BRIEF

MAIN HOUSE:

GROUND FLOOR: Front Door to Entrance Hall. Lounge. Dining Room. Kitchen. Utility Room. Shower Room.

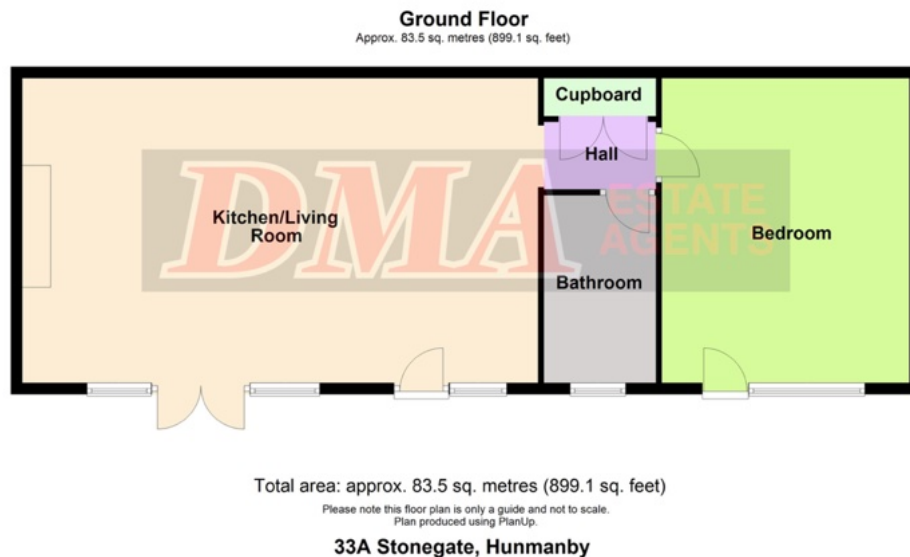
FIRST FLOOR: Four Bedrooms (ensuite to master bedroom). Bathroom.

OUTSIDE: Garden. Drive with ample parking. Double Garage.

BUNGALOW: Lounge / Kitchen. Utility Room. Bedroom. Bathroom.

26 Belle Vue Street, FILEY, North Yorks. YO14 9HY. Telephone: 01723 515527
www.dmaestateagents.co.uk / www.rightmove.co.uk

Floor Plan:



Rear Stable Door to:

HALL

Space for tall American style 'fridge / freezer. Radiator. Hardwood floor.

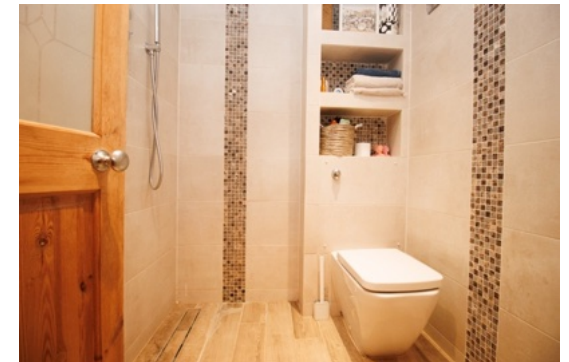


UTILITY ROOM 3.35m x 1.47m (11'0" x 4'10")

Base cupboards with worktops over. Plumbing for automatic washing machine. Space for tumble dryer. Wall mounted boiler. Inset spotlights. Coats / shoe storage. Hardwood floor. Sealed unit double glazed window in timber frame.

WET ROOM 1.44m x 1.98m (4'9" x 5'6")

Mixer tap shower. Handbasin and wc. Inset spotlights. Extractor fan. Underfloor heating. Sealed unit double glazed window in timber frame.



KITCHEN

4.34m x 2.69m (14'3" x 8'10")

Inset Belfast sink. Base cupboards with wooden worktops over. Matching wall cupboards over. Breakfast bar. Double range cooker with gas hob with extractor hood above. Inset spotlights. Plumbing for dishwasher. Feature radiator. Hardwood floor. Exposed beamed ceiling. Sealed unit double glazed windows in timber frames.



DINING ROOM

4.34m x 3.20m (14'3" x 10'6")

Exposed brick feature wall. Exposed beamed ceiling. Hardwood floor. Sealed unit double glazed window in timber frame.



Floor Plan:



Total area: approx. 142.1 sq. metres (1529.4 sq. feet)

Please note this floor plan is only a guide and not to scale.
Plan produced using PlanItUp

33 Stonegate, YO14 0NS, Hunmanby

OUTSIDE:

Decked area. Parking to the front.
GARAGE 6.10m x 3.35m (20'0" x 11'0") **with light and power.**



Council Tax Band: C.

LOCATION:

Hunmanby is a large village three miles inland from Filey and nine miles from both Scarborough and Bridlington. The village offers a wide range of shops, chemist, doctors' surgery, solicitors' office, dentists, optician, community centre, sub Post Office, Primary School, two churches, a sports and social club together with both bus and train services.

DIRECTIONS:

Take the Bridlington road from Filey and turn right just after the Royal Oak level crossing. Follow the signposts into Hunmanby village continuing up Stonegate after the turning for Hungate Lane. The property is located on the right hand side immediately after the Community Centre.

Front Door to:

ENTRANCE HALL

Hardwood floor.



LOUNGE

7.82 x 4.44m opening to 5.63m
(25'8" x 14'7" opening to 18'6")

Log burner in exposed brick fireplace with timber mantle. Exposed beamed ceiling. Hardwood floor. Understairs cupboard. Inset spotlights. Two sealed unit double glazed windows in timber frame. **Double doors to garden.**

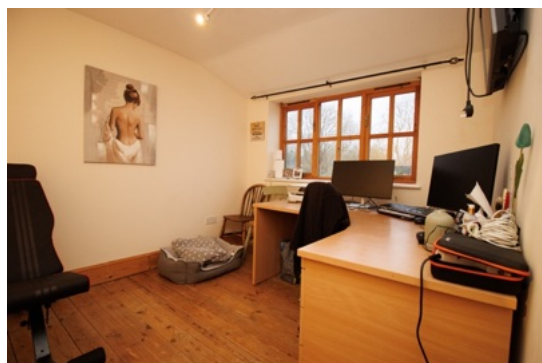


Viewing strictly by appointment only through DMA Estate Agents

FIRST FLOOR:

BEDROOM TWO 5.13m x 3.14m (15'10" x 10'4")

Walk-in closet. Exposed wood floor. Radiator. Sealed unit double glazing in timber frame. **Loft access.**



BEDROOM FOUR / OFFICE 2.87m x 2.59m (9'5" x 8'6")

Radiator. Exposed wood floor. Sealed unit double glazed window in timber frame.

DRESSING AREA

2.92m x 1.47m (9'7" x 4'10")

Built-in storage. Inset spotlights. Chrome towel rail. Sealed unit double glazed window in timber frame. **Protentional to convert into an ensuite.**



Arch to:

UTILITY ROOM

Plumbing for automatic washing machine and dishwasher. LPG central heating boiler.

BATHROOM 3.30m x 2.08m (10'10" x 6'10")

Quadrant shower cubicle. Bath, handbasin and wc. Spotlights. Part tiled walls. Chrome ladder radiator. Sealed unit double glazed window in timber frame.



BEDROOM

4.62m x 3.66m (15'2" x 12'1")

Hardwood flooring. Radiator. Sealed unit double glazed window in timber frame. **Door to decked area.**



SELF CONTAINED DETACHED BUNGALOW / ANNEXE:



Stable Door to:

KITCHEN / LIVING AREA

9.07m x 5.36m (29'9" x 17'7")

Inset sink and drainer. Modern base cupboards with wooden worktops over. Matching wall cupboards. Built-in oven and gas hob. Stainless steel extractor hood. Feature exposed beams. Recessed brick fireplace. 15KW multi-fuel burning stove. Underfloor heating. Hardwood flooring. Sealed unit double glazed windows in timber frames. **Patio doors in timber frame.**



BEDROOM THREE

3.42m x 3.09m (11'3" x 10'2")

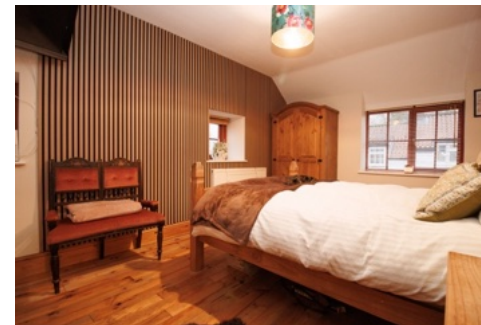
Exposed wood floor. Radiator. Sealed unit double glazed window in timber frame. **Loft access.**



BEDROOM ONE

2.99m x 4.36m (9'10" x 14'4")

Exposed wood floor. Radiator. Three sealed unit double glazed windows in timber frames.



ENSUITE / WET ROOM

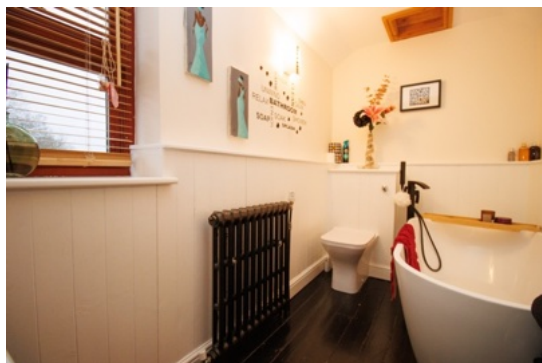
2.25m x 1.57m (7'5" x 5'2")

Rain shower. Handbasin in vanity unit and wc. Inset spotlights. Chrome towel radiator. Sealed unit double glazed window in timber frame.

BATHROOM

3.02m x 1.60m (9'11" x 5'3")

Free standing bath, handbasin and wc. Exposed wood floor. Feature radiator. Sealed unit double glazed window in timber frame. **Loft access.**



OUTSIDE:

Double gates and drive to GARAGE with light and power. Lawn and patio. Large WORKSHOP / STORE. POTTING SHED.



Council Tax Band

D.